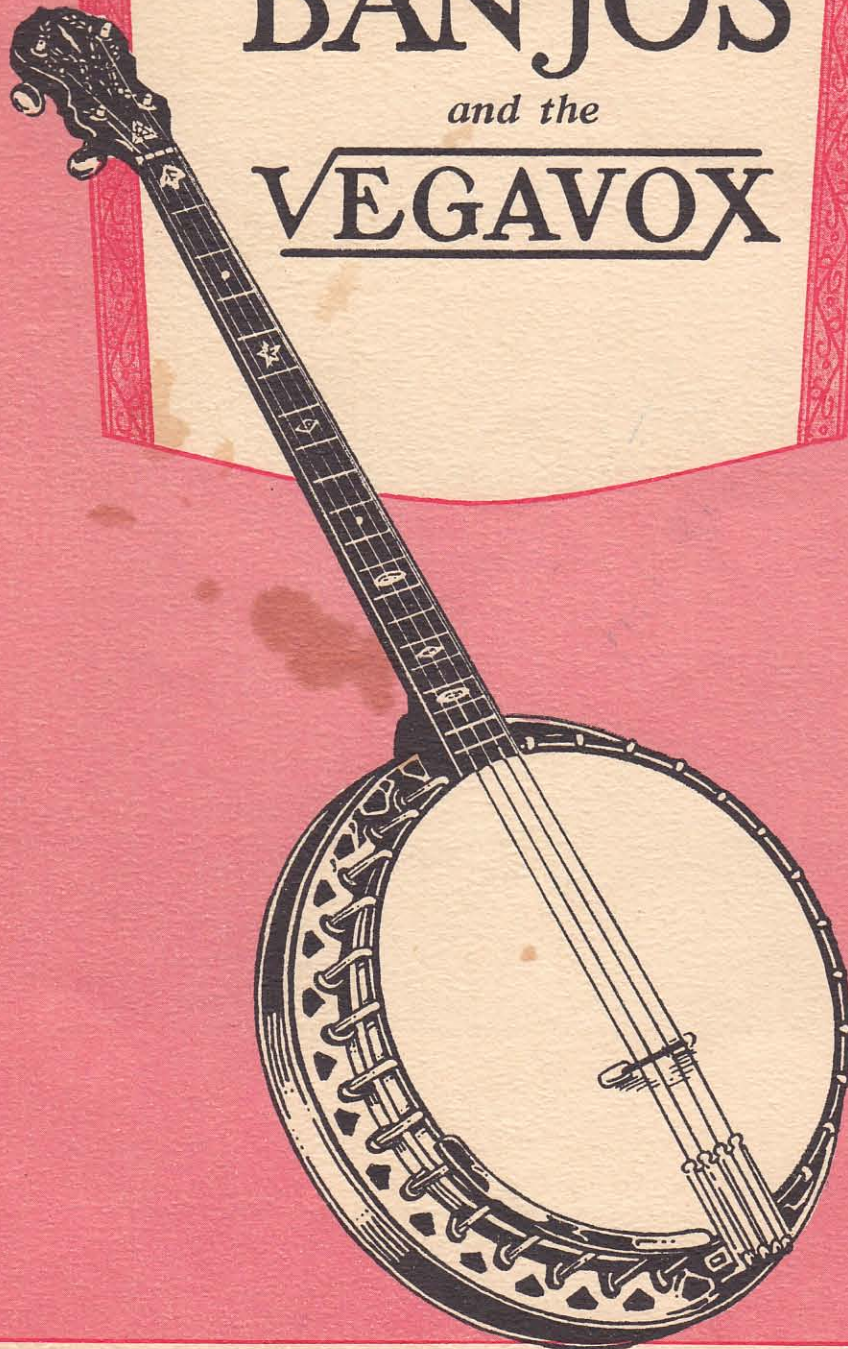


VEGA
Vegaphone
BANJOS

and the

VEGAVOX



THE ARTIST'S CHOICE



FOR THE IDENTIFICATION AND DATING
OF
VINTAGE GUITARS, MANDOLINS AND BANJOS
CATALOGS FROM THE COLLECTION OF GEORGE YOUNGBLOOD

These are scans of catalogs originally distributed to the public to describe the manufacturer's products available for sale at one point in time.

The intended use for these catalogs is historical research: vintage instrument identification and dating.

These catalogs are not offered here for sale or re-sale – They are only for the academic purpose of instrument identification, research and historical context. Please respect their use and do not reproduce, copy or distribute this information for any other purpose.

It is important to note that instrument catalogs are not always accurate in their descriptions of instrument specifications or the images used. While product improvements were constantly being made; catalogs often used older existing drawings, etchings or photographs. In some cases instruments were offered in catalogs that had been discontinued for years. For these reasons, catalogs can only be used as general guides for the dating and identification of vintage instruments.

If you are having trouble with some of the instruments details, we may be able to help. Feel free to contact us at:

ACOUSTICMUSIC.ORG:
<http://www.AcousticMusic.Org>

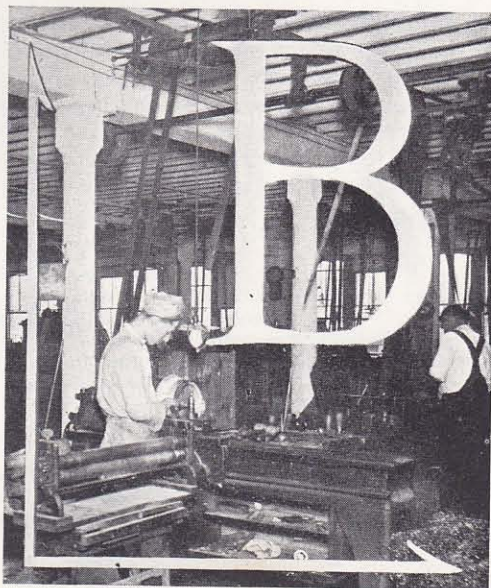
The **VEGA** Co.

155 Columbus Ave.
BOSTON, MASS.
manufacturers and importers

of
Band and Orchestra
Instruments

The Artist's Choice

· VEGA ·
BANJOS



BANJOS, GUITARS, MANDOLINS, like men, are judged by the friends they keep. Each has certain characteristics that create admiration and praise, and attract life-long friendship. The amazing popularity of the VEGA BANJOS, GUITARS and MANDOLINS today is truly indicative of sterling qualities and characteristics that are creating more friends and admirers each day.

Each instrument is made with the utmost care and precision; every manipulation so studied and calculated; every particle of material is so scrutinized; every part so fitted and tested, is there any wonder the connoisseurs of fretted instrument art remark—"truly, VEGA BANJOS, GUITARS and MANDOLINS are examples of tone color, most durably constructed and artistically designed—they bear evidence of master craftsmanship."



Style "N" Special

Tenor, Plectrum, Regular and Mandolin Styles



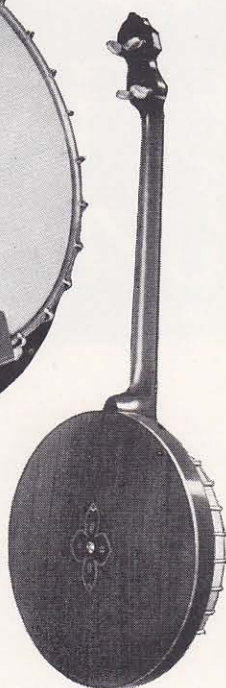
THE Style "N" Tenor banjo is an ideal instrument for the beginner. Constructed with accuracy equal to the higher priced models. Carefully finished and adjusted so that the student and beginner may have a thoroughly reliable instrument. The tone is clear and learning to play is enjoyable for everyone. The flashy appearance of the patented flanges and resonator add to the encouragement of the student.

Neck Selected and seasoned mahogany is used for the neck. The blackwood fingerboard is inlaid with pearl position dots and has nickel silver frets set permanently in perfect position for an accurate scale. The peg head and heel piece are veneered with blackwood.

Rim The five-ply laminated maple rim assures maintenance of perfect shape. It is mounted with a steel ring and spun nickel silver band for additional strength and improved tone.

Trimmings Equipped with geared pegs and nickel plated tailpiece, special Vega strings and maple bridge. All metal parts nickel plated.

Resonator Durably constructed with five laminations and finished with a mahogany back on which is an artistic design. The rim of the resonator is six-ply and bound with silverleure. The individual flanges are adjustable to the rim and resonator, giving flash and durability.

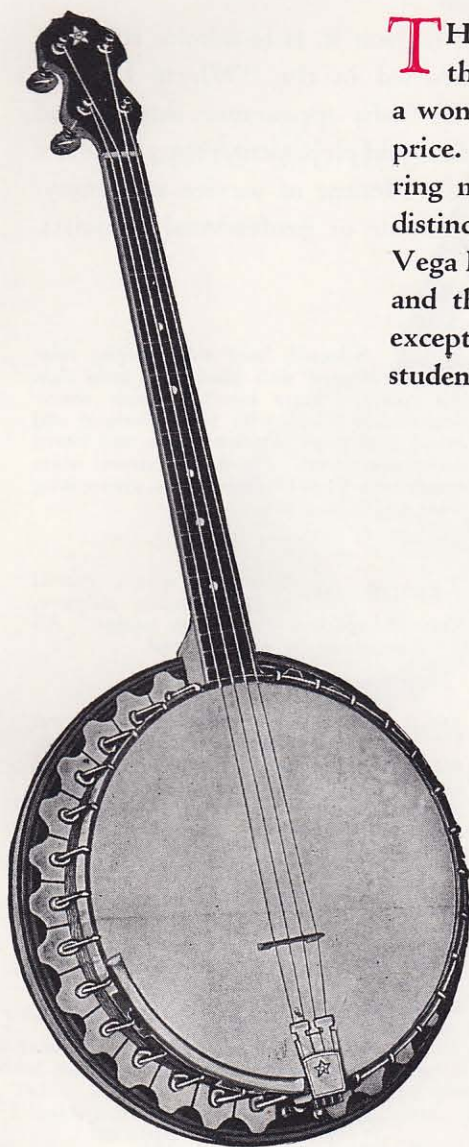


Back view—showing grained mahogany finish and artistic design.

Style "N" Special
\$60

"Little Wonder" Special

Tenor, Plectrum, Regular and Mandolin Styles



See page 8
for back view

THE "Little Wonder" Special Model is everything its name implies—a beauty in appearance, a wonder for tone and the highest quality for the price. Its tone is clear and brilliant, due to the ring mounted under the head, giving forth that distinct banjo twang which is characteristic of Vega Banjos. The high polish natural wood finish and the beautiful flange design make this model exceptionally attractive. A little wonder for the student.

Neck Selected hard maple neck of joined construction with a blackwood strip through the center for additional strength. The genuine ebony fingerboard is set with nickel silver frets and inlaid with pearl position dots. Finished in natural white maple.

Trimmings G e a r e d pegs, extension tailpiece, Vega strings and ebony top bridge, all metal parts heavily nickel plated.

Rim Laminated hard maple finished in natural, wood bottom edge ebonized. Mounted with a spun nickel-silver top giving increased strength. Fitted with a high quality calfskin head and a heavy notched top hoop.

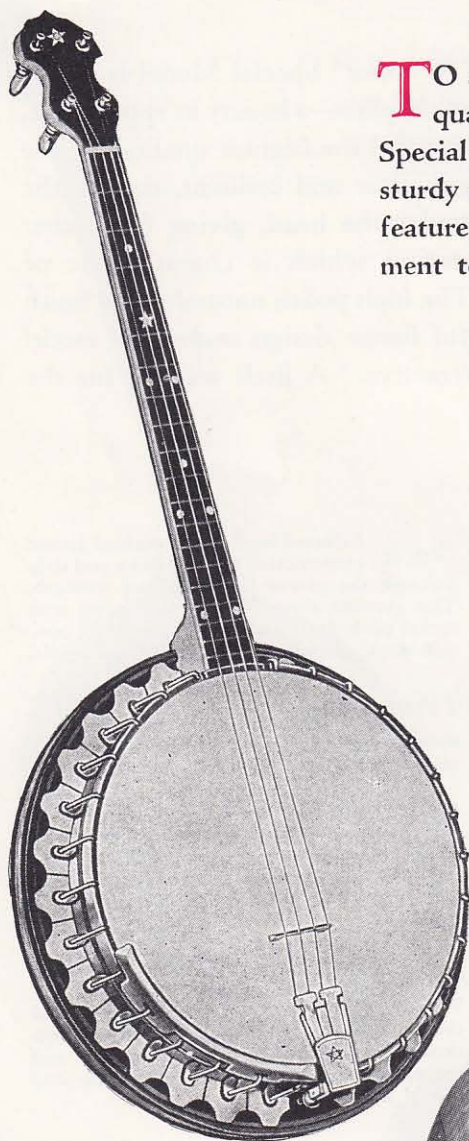
Resonator Rim and back also laminated for strength and durability. Wood of selected curly maple in sectional design natural wood finish. Flanges artistically designed and adjusted to rim and resonator, giving a flashy appearance and sturdy construction.

"Little Wonder" Special
\$75

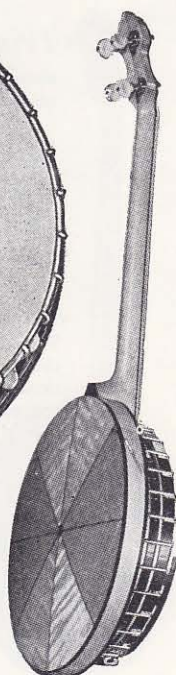


"Whyte Laydie" Special

Tenor, Plectrum, Regular and Mandolin Styles



Back view — showing the beautiful laminated, curly maple, natural finished, resonator.
Same for "Little Wonder"



TO see it, and to hear it, is to admire the high quality maintained in the "Whyte Laydie" Special Model. Its flashy appearance, durable and sturdy construction, and rich, penetrating tone are features that give a lifetime of service and enjoyment to either amateur or professional banjoists.

Neck Selected, hard curly maple, reinforced with blackwood strip thru the center. Extra heavy genuine ebony fingerboard bound with white fiberloid and inlaid with pearl position marks and heavy nickel silver frets. Finished in natural white maple with Vega Durable Finish, giving long wear and high lustre.

Trimmings Equipped with geared pegs, extension tailpiece, Vega strings and ebony top bridge. All metal parts heavily nickel plated.

Rim Laminated maple, finished in natural wood, bottom edge ebonized. Patented "Whyte Laydie" Tone Tube mounted in truss fashion on rim under the head, producing the favorite "Whyte Laydie" tone quality.

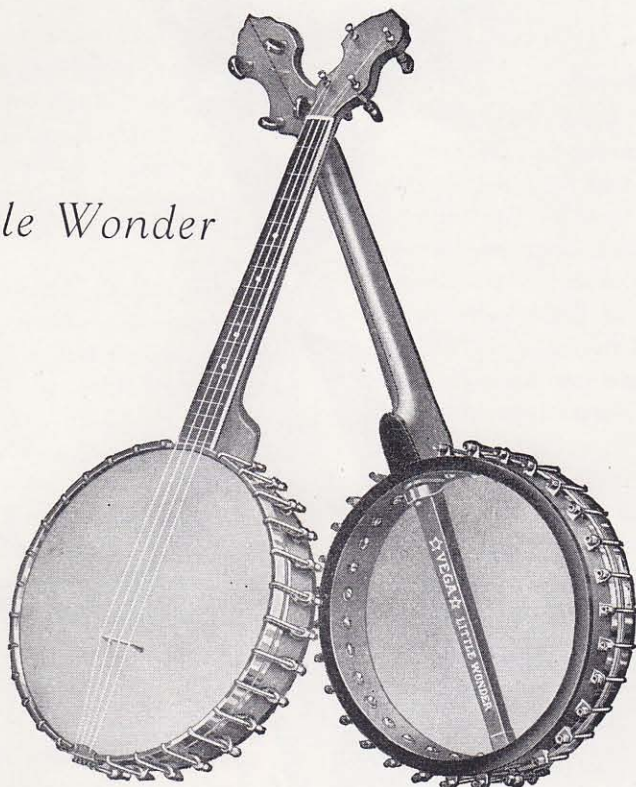
Resonator Beautiful curly maple back in eight sectional design, laminated back and rim finished in natural white. Heavy nickel-plated flanges adding to the scintillating beauty of the "Whyte Laydie."

"Whyte Laydie" Special
\$100

Open-Back Model

Tenor, Plectrum, Regular and Mandolin Styles

Little Wonder



THE Open-Back Models of Vega Banjos offer a wonderful opportunity for beginners to have an instrument of the highest quality, equivalent to those of the higher prices, but without the resonating chamber which goes to build up tone.

Little Wonder This Open-Back Model has a selected hard maple neck reinforced with a blackwood strip through the center. The fingerboard is of genuine ebony set with nickel silver frets and inlaid with pearl position dots. The rim is of laminated hard maple and mounted with a spun nickel silver top. The high quality calfskin head is fitted with a heavy notched top hoop. \$50

Whyte Laydie The neck of this model is of selected curly maple, of joined construction with a blackwood strip through the center for additional strength. The fingerboard is of extra heavy genuine ebony bound with white fiberloid and inlaid with pearl position marks and nickel silver frets. The rim is of laminated maple with bottom edge ebonized and the top mounted in truss fashion with the patented Whyte Laydie Tone Tube. All metal parts are heavily nickel plated and the wood is finished in natural white maple with the Vega Durable Finish which gives wear and lustre. \$80

Tubaphone Selected maple with strip through the center extending to the fingerboard to prevent warping, shaded in amber brown and mounted with a heavy 3/16 inch ebony fingerboard, bound with fiberloid and set with nickel silver frets and fancy pearl inlay in the peg-head, make up the neck of this model. The rim is of seven laminations bound with a bracket band and mounted with the famous Tubaphone Tone Tube. Also fitted with nickel plated brackets, hooks and ball-end nuts. The notched top hoop and all metal parts are heavily nickel plated. \$100

VEGA



“Professional”

The "Professional" Vegaphone

FOR the banjoist who wishes a dependable instrument and still one that is novel in its construction and tone, the "Professional Vegaphone Banjo" is presented. It is a professional instrument both in design and in tonal qualities.

The long scale with the accompanying greater string vibration in combination with the resonator and flanges, create a hitherto unheard tone with resonance and sustainance, enabling the player to produce many variations from very soft to very loud. The Professional model is made with the view to enable the banjoist to possess an instrument of these qualities, but without the fanciness of the higher priced models.

Neck

Selected maple neck with strip through the center extending to the fingerboard to prevent warping. A heavy 3/16 inch ebony fingerboard, fiberloid bound with 19 nickel silver frets, pearl position marks and fancy pearl inlay in peg head. Vega Durable Finish in shaded amber brown.

Rim

Seven lap laminated maple rim with the bracket band and famous Tubaphone tone tube. Fitted with nickel plated brackets, hooks and ball end nuts. The flange feature between rim and resonator give proper tone sustainance. Strong notched top hoop and all other metal parts finished in polished nickel plate. The bottom edge of the rim is ebonized and bound with fiberloid, wood finished to match the neck.

Resonator

Five ply laminated maple shell, making a very strong construction. Finished in an eight sectional design on the back, and shaded to match the neck. The edges are bound with fiberloid tortoise shell. The resonator can be detached by means of a single screw.

Trimings

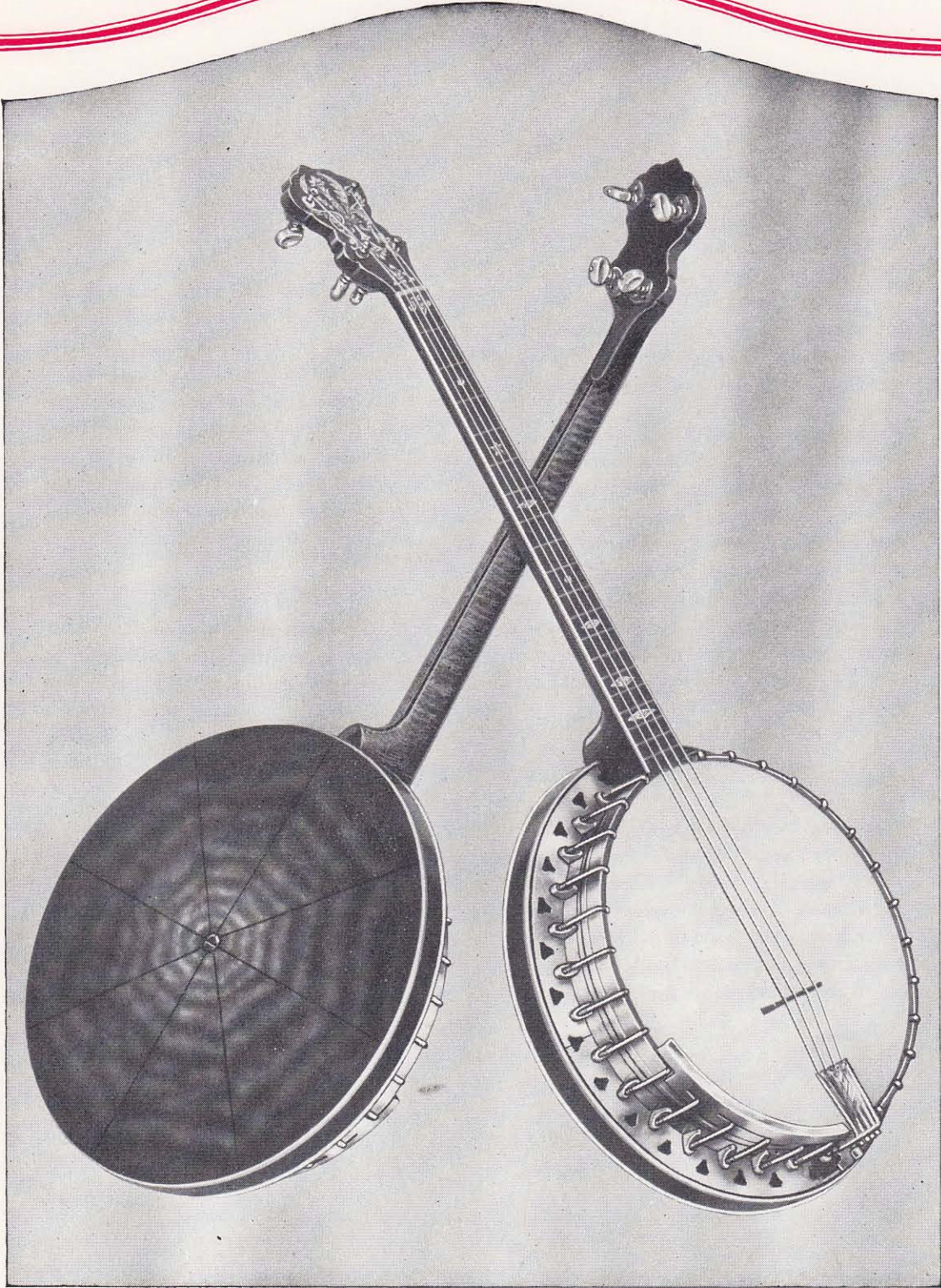
Finest gear pegs, tension tailpiece, best grade calfskin head waterproofed and put on with a square wire to prevent slipping. Vega ebony top bridge, Vegaphone strings and nickel plated arm rest.

ALL PARTS POLISHED NICKEL PLATE,
COMPLETE WITH PLUSH LINED CASE.

Made in Tenor, Plectrum, Regular, Guitar and Mandolin Banjo Styles

"Professional" Vegaphone \$150

VEGA



"Soloist"

The "Soloist" Vegaphone

THE new Soloist model is designed to offer the finest tonal qualities, characteristic of all Vegaphones, with an attractive flashing appearance. This model is the ideal instrument for the player who desires a combination of superior tone and a flashing golden appearance.

Neck

Selected hard maple joined with blackwood strip through center to prevent warping. The peg head is fancy in design, richly inlaid with mother of pearl and hand-engraved. The genuine ebony fingerboard has inlaid and engraved pearl position marks and is bound with white fiberloid. Vega Durable Finish in shaded amber brown.

Rim

Seven lap laminated hard maple rim. The notched top hoop and hooks are quadruple gold plated. The new design flanges and brackets are finished by our

gold lacquer process duplicating a burnished gold in appearance and durability. The patented Tubaphone tone tube and bracket band are highly nickel finished in contrast to the gold parts. Bottom edge of rim is ebonized and bound with fiberloid, wood is finished to match the neck.

Resonator

Figured maple five ply laminated shell and rim. Shaded finish to match the neck with an eight sectional design of blackwood. The edges are bound with white fiberloid. Quickly detached by means of a single screw through center of resonator.

Trimmings

Gold plated gear pegs with white buttons, gold plated tension tailpiece and arm rest. Best grade calfskin head waterproofed and fitted with square wire to prevent slipping. Vegaphone strings and ebony top bridge.

COMBINATION GOLD AND NICKEL FINISH,
COMPLETE WITH PLUSH LINED CASE.

Made in Tenor, Plectrum, Regular, Guitar and Mandolin Banjo Styles

"Soloist" Vegaphone \$200

VEGA*“Artist”*

The "Artist" Vegaphone

IN addition to the perfection of construction and tone with the exclusive features found in all Vegaphones, the "Artist" has a hand-carved neck, and is heavily gold plated on all exposed metal parts. This gives a beautiful appearance suitable for those skillful players who are on the stage and in select dance orchestras appearing constantly before the public.

The "Artist" is designed for the true artist who desires the best possible tone and construction with an extra fine appearance.

Neck

Choice curly maple hand carved neck with a black veneer through center of neck to prevent warping. A genuine ebony fingerboard 3/16 inch thick with 19 nickel silver frets and bound with white fiberloid. The fingerboard, back and front of peg head, and heel piece are inlaid with beautiful engraved pearl designs. Vega Durable Finish in shaded amber brown, highly polished.

Rim

Seven lap laminated rim with the patented Tubaphone tone tube and bracket band with brackets, hooks and ball end nuts. Patented new design detachable flanges, notched top hoop, and all exposed parts are gold plated and hand burnished. The bottom edge of the rim is ebonized and bound with shell fiberloid. Wood finished in amber brown to match the neck.

Resonator

Curly maple five ply laminated shell and rim. Shaded finish to match the neck, with an eight sectional design on the back inlaid with blackwood. The side of the resonator is inlaid with a beautiful attractive marquetry and the edges are bound with white fiberloid.

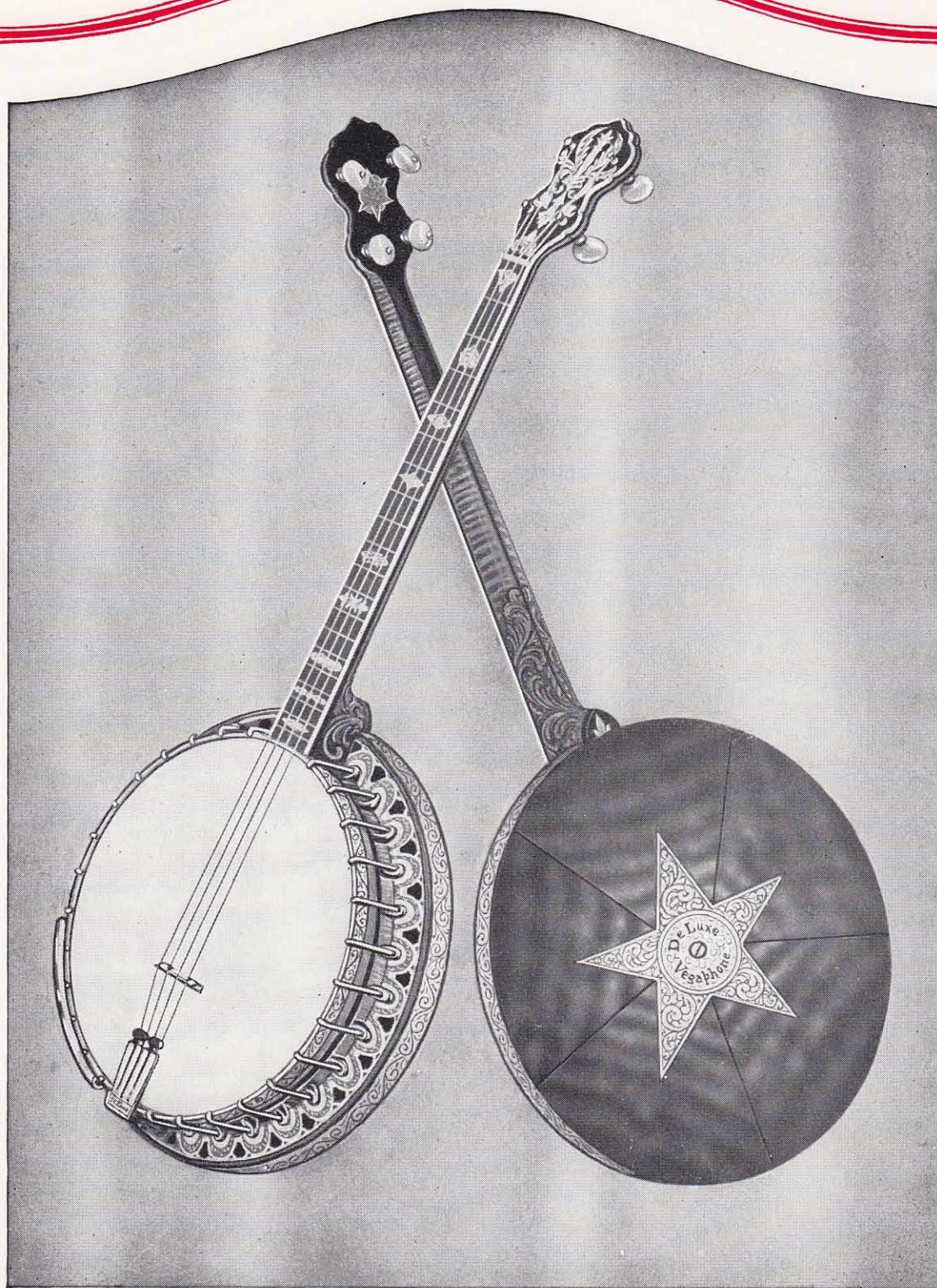
Trimings

Gold plated tension tailpiece, new gear pegs with pearl buttons. Best grade calfskin head waterproofed and fitted with a square wire to prevent slipping. Vegaphone strings and ebony top bridge, also a gold plated arm rest.

ALL EXPOSED METAL PARTS HEAVY GOLD PLATED AND
HAND-BURNISHED, COMPLETE WITH PLUSH LINED CASE.

Made in Tenor, Plectrum, Regular, Guitar and Mandolin Banjo Styles

"Artist" Vegaphone \$250

VEGA*"De Luxe"*

The "De Luxe" Vegaphone

THE most highly perfected banjo in every phase of construction, tone and appearance is without a doubt the "De Luxe" Vegaphone. Its flashing beauty catches the eye and causes the audience to wonder at the marvelous appearance and beautiful tone.

Quadruple gold plated on all metal parts, hand-burnished and engraved, reflects the rays of light in a hundred directions immediately attracting and compelling the attention of the audience. Rare materials are used in construction for the purpose of tone and appearance. Ebony, pearl, hand-engraving, hand-coloring and carving requiring hours of detailed and skillful work go to complete the "De Luxe".

Neck

Special selected fancy curly maple neck elaborately hand-carved with extra heavy genuine ebony fingerboard and nineteen nickel silver frets. Ebony on the back of peg head extends part way down the neck. Peg head, heel piece, and fingerboard are inlaid with elaborate pearl designs hand-engraved. The wood is carefully and highly finished by hand in shaded amber brown with Vega Durable Finish.

Rim

Beautifully engraved and quadruple gold plated metal parts, including the top hoop, bracket band and flanges. Brackets and tension hooks are heavily gold plated and burnished. Heavy seven lap laminated maple rim with the Tubaphone tone tube. The bottom edge of the rim is ebonized and bound with shell fiberloid. The wood is finished to match the neck.

Resonator

Exterior five sectional design of black-wood inlaid in fancy curly maple. The side has a white ivory finish fancily engraved and hand-colored for contrast. A beautifully engraved white ivory fiberloid star design, also colored, is inlaid in the back, presenting a striking unique appearance. Highly polished and shaded to match the neck.

Trimings

Engraved and gold plated tension tail-piece and new gear pegs with heavy pearl buttons. Vegaphone strings and ebony top bridge. Very best selected calfskin head waterproofed. Gold plated arm rest.

QUADRUPLE GOLD PLATED PARTS, HAND-BURNISHED AND
FULLY ENGRAVED, COMPLETE WITH PLUSH LINED CASE.

Made in Tenor, Plectrum, Regular, Guitar and Mandolin Banjo Styles at the same price.

"DeLuxe" Vegaphone \$375

VEGA

Style I

Style I Vegavox

THE tone of the Vegavox has been developed with the ideal of making an instrument superior for every acoustical condition. This not only entailed a study of acoustical principles pertaining directly to the instrument but also of places and conditions wherein the instrument is used. Undoubtedly the supreme test of acoustical perfection in banjos is the result of sound reproduction through phonograph recording and broadcasting. Accordingly, throughout the development of the Vegavox, particular attention was given to this phase. It developed that a deep resonator brings out the true fullness of the bass notes and adds strength and power to the sound waves projected from the instrument, and also gives the instrument an easier, more instant response to the action of the pick.

The first model of this "most beautifully voiced banjo in banjo history," the Vegavox, is the Style I. It gives just that blending, pulsating rhythm so desired in the orchestra. It responds quickly with a full-bodied tone that carries to the remotest corner of any auditorium.

Body In this model the body has an inside rim of six-ply laminated maple, mounted with the famous Tubaphone tone-tube. The resonator covers the entire rim up to the top tension hoop and flanges. This resonator is of five-ply maple with fancy grained maple in eight-sectional design on the back, and is finished in a beautifully shaded amber mahogany in the highly polished Vega Durable Process. The wall of the resonator, $2\frac{3}{4}$ inches deep, is inlaid with two strips black, white and Silver, a new type of inlay that gives a brilliant sparkle, and its edges are bound with white fiberloid. The metal flanges, top tension hoop, tension nuts and all metal parts are of lustrous nickel plate.

Neck The neck is of straight grained maple, specially seasoned for durability, and triple re-enforced. The fingerboard is of $\frac{3}{16}$ inch genuine ebony edged with white celluloid and inlaid with mother of pearl position marks. The frets of the finest nickel-silver, securely and accurately placed.

Peghead The peghead is artistically designed and inlaid with hand-engraved pearl. The pegs are of the finest four-to-one geared pegs.

Trimmings The Style I Model is equipped with a Vega Self-tension Tailpiece, Special Vegavox Armrest, the very best water-proofed calfskin head, Vega Strings and a silk-plush lined case of fancy imitation alligator skin.

STYLE I—LUSTROUS NICKEL PLATE

Complete with special case

Made in Tenor, Plectrum, Regular, Guitar and Mandolin Banjo Styles

Style I Vegavox \$200

VEGA**Style II**

Style II Vegavox

THE study of tone is a science in itself and to obtain a certain desired quality is a difficult project requiring extensive experimentation and tests. The deep resonator is the main feature responsible for the new Vegaphone tonal qualities, as this extra depth gives greater space for the development of sound reverberation within the instrument. In combination with the resonator the depth of the rim is also an important factor, and on this rim is mounted the famous Tubaphone Tone Tube which is the first step for producing Vegavox tonal quality.

In every detail, from the size of the sound openings in the flanges to the rim laminations, each component part has been determined in combination with the other features to give the Vegavox that desired tone quality which has made it the "most beautifully voiced banjo in banjo history."

The second model of this banjo of banjos is the Style II. Its new beautiful tone quality is both mellow and brilliantly powerful and it adds new depth and fullness to the bass notes with the treble clear and penetrating.

Body In Style II the body has an inside rim of six-ply laminated maple, mounted with the famous Tubaphone Tone Tube. The resonator covers the entire rim up to the top-tension hoop and flanges. This resonator is of five-ply maple with fancy grained maple in eight sectional design on the back, and is finished in a beautifully shaded amber mahogany in the highly polished Vega Durable Process. The wall of the resonator is $2\frac{3}{4}$ inches deep and is inlaid with strips of sparkling Goldeur. The top-tension hoop, tailpiece and armrest are of heavy gold plate. The flanges are of Vega Gold-lacquer to match and the tension nuts are of bright polished nickel in flashing contrast.

Neck The neck is a richly finished straight grained maple neck, properly seasoned to assure freedom from warping, and is re-enforced with two strips of blackwood. The fingerboard is of $\frac{3}{16}$ inch genuine ebony edged with white celluloid and inlaid with hand-engraved pearl position marks. The frets are of the finest nickel-silver, securely and accurately placed.

Peghead The back of the peghead is of ebony extending on the neck, the front is also of ebony and is richly inlaid with hand-engraved designs of pearl. The pegs are of the finest four-to-one geared pegs.

Trimmings The Style II Model is equipped with a Vega gold plated Self-tension Tailpiece, heavy gold plated Special Vegavox Armrest, the best water-proofed calfskin head, Vega Strings and a silk-plush lined case of fancy imitation alligator skin.

STYLE II—GOLD AND NICKEL COMBINATION Complete with special case

Made in Tenor, Plectrum, Regular, Guitar and Mandolin Banjo Styles

Style II Vegavox \$250

VEGA

Style III



Style III Vegavox

THE Vegavox is a distinctive instrument. Its very design signifies distinction, but more important is its tone. Extensive experiments have taken place over a long period of time in order to produce a new banjo that will overcome the acoustical barriers of recording and broadcasting. The Vegavox is the result. Its voice blends evenly with the other instruments, yet it is heard clearly and distinctly from the ensemble. For solo recording or broadcasting, it is absolutely unequaled.

The third Vegavox model is Style III, built upon acoustical principles, with a tone quality that is resonant and sustained, carrying through the air with perfect fidelity and clearness. The acoustical barriers of recording and broadcasting no longer exist for this new achievement in banjo construction, the Vegavox. "It is the most beautifully voiced banjo in banjo history"—no matter where it is played.

Body In Style III the inside rim is of six-ply laminated maple, mounted with the famous Tubaphone Tone Tube. The entire rim is covered by the latest in resonators up to the top-tension hoop and flanges. The resonator is $2\frac{3}{4}$ inches deep and of five-ply maple. The back is of fancy grained maple in eight sectional design, finished in a beautiful shaded amber mahogany in the highly polished Vega Durable Process. The wall of the resonator is completely inlaid with white fiberloid which has two artistically hand-engraved and hand-colored panels. All the metal parts including the top-tension hoop, flanges, tension nuts and armrest are of heavy quadruple gold plate.

Neck The triple re-enforced straight grained maple neck is finished under a special process, always maintaining a high lustrous and new appearance. It is richly hand-carved near the heel. The fingerboard has elaborately engraved pearl position marks inlaid in a $\frac{3}{16}$ inch genuine ebony bound with white celluloid. The frets are accurately and securely placed, and are of nickel silver.

Peghead The peghead is inlaid with an elaborately engraved pearl design on ebony, with an engraved pearl inlay on the back side which is also of ebony extending on to the neck. The pegs are geared to the ratio of four-to-one, and have beautiful pearl buttons.

Trimmings The Style III is equipped with a quadruple plate Vega Self-tension Tailpiece, a quadruple plate Special Vegavox Armrest, the finest water-proofed calfskin head, Vega Strings and a silk-plush lined case of imitation alligator skin.

STYLE III—QUADRUPLE GOLD PLATE Complete with special case

Made in Tenor, Plectrum, Guitar and Mandolin Banjo Styles

Style III Vegavox \$300

VEGA

Style IV

Style IV Vegavox

WE hear much about tonality, timbre, overtones and other scientific terms of expression for tone color—but what does it mean in terms of banjo performance? It means just this—it is that characteristic tone quality that is of pleasing beauty and melodic purity which you find in Vegavox Banjos. Many improvements have taken place in the field of radio and phonographs to perfect tonal quality, and now a similar achievement in the banjo world has taken place with the introduction of the Vegavox.

The Style IV Vegavox Model represents the greatest achievement in banjo building today. The deep resonator, top tension feature, self-tension tailpiece, laminated rim and resonator, re-enforced neck and many other improvements form the bases for its renowned high quality. The artistically and elaborately designed resonator back and wall, richly engraved flanges, hand-carved neck, beautifully engraved pearl inlays and lustrously finished maple neck and resonator back make up its beauty of design. The Style IV Vegavox Model is truly the “most beautifully voiced banjo in banjo history” and even more—it is the deluxe model of the banjo of banjos, the artists’ ultimate choice.

Body The wall of the resonator, 2¾ inches deep, is inlaid with sparkling strips of Goldeur in richly hand-engraved and hand-colored white ivory fiberloid. The lustrously finished five-ply curly maple resonator back, in eight sectional design, is inlaid with a beautifully engraved and colored star. The inside rim is of six-ply laminated maple mounted with the famous Tubaphone Tone Tube under the head and is covered by the wall of the resonator up to the top-tension hoop and flanges. The top-tension hoop, flanges and tailpiece are luxuriously engraved and plated with quadruple gold.

Neck The genuine ebony fingerboard is edged with white fiberloid and decorated with artistically engraved mother of pearl position marks. The frets are of nickel-silver securely and accurately placed and finished to give ease and smoothness in playing. The neck is triple re-enforced with black-wood strips to assure strength and durability, and is hand carved near the heel.

Peghead The peghead front is of ebony, artistically designed with hand-engraved pearl, bound with white fiberloid. The back is also of ebony extending on to the neck to add strength to the peghead and is inlaid with an engraved floral design. The pegs are of the highest quality four-to-one geared pegs with pearl buttons.

Trimmings The Style IV Vegavox Model is equipped with an engraved Vega Self-tension Tail-piece heavily gold plated, Vegavox Armrest plated with quadruple gold, Vega Strings, ebony-top Vega Bridge, selected calfskin waterproofed head and a silk plush lined imitation alligator skin case.

STYLE IV—ENGRAVED, QUADRUPLE GOLD PLATE

Complete with case

Made in Tenor, Plectrum, Regular, Guitar and Mandolin Banjo Styles

Style IV Vegavox \$425



Vega Tenor-Guitar and Tenor-Lute

TENOR-
GUITAR

BANJOISTS—double up on something different. That is the demand of orchestra leaders and audiences as well. The new Vega Tenor-Lute and Tenor-Guitar have a tone that is different, an appearance that is different, yet the fingering remains the same as that of the tenor or plectrum banjo, whichever is preferred. Their tone has the depth and resonance of a guitar and the sweetness of a mandolin, presenting beautiful effects in arrangement. Each instrument has that distinctive Vega Quality—accuracy to every detail and of the choicest materials.

Tenor-Guitar The Tenor-Guitar is attractive in design, consisting of a guitar body of selected spruce top in natural finish with an ebony string saddle most accurately placed and lustrously finished mahogany sides and back. The interior is re-enforced and acoustically constructed to give the proper depth and resonance. The fingerboard, conforming either to that of tenor or plectrum banjo, is of ebony inlaid with pearl position dots and nickel silver frets. The peghead is equipped with geared pegs.

Tenor-Guitar\$40

Tenor-Guitar, Artists' Special 70

TENOR-
LUTE

Tenor-Lute The Tenor-Lute is of an arched-back lute construction with beautifully finished mahogany back and sides. The top is of spruce, shaded in amber, bound with white fiberloid and inlaid with a shell fingerboard. The neck is of mahogany and its fingerboard, conforming either to the tenor or plectrum banjo, is of ebony set with pearl position dots and nickel silver frets. The peghead is equipped with geared pegs.

Tenor-Lute\$60

Tenor-Lute, Artists' Special . 90



Vegaphone Strings

VEGAPHONE STRINGS are specially made of tested steel for long scale banjos such as the Vegaphone. They are the proper gauge to withstand the utmost tension and give a clear, resonant tone, true to pitch throughout the entire scale.

For Tenor Banjo

No.		Dozen
1151	A or 1st, steel	\$1.06
1152	D or 2nd, steel	1.06
1153	G or 3rd, wound	1.82
1154	C or 4th, wound	2.00
1155	Set of four74

Vega Quality Heads

Ready Stretched

VEGA QUALITY HEADS are specially made to Vega specifications by Joseph B. Rogers, Jr. Each head has been individually selected for its color and uniformness. These heads bear the name of Vega Quality, for they represent the finest in banjo heads—a product of master-craftsmanship. No. 1023, for 11 inch rim \$7.60



Keratol Banjo Cases

THE Keratol Banjo Cases are made of three-ply veneer, covered with extra heavy seal grain keratol, and lined with the finest fleece. All trimmings are brass, nickel-plated, and will not rust. Equipped with heavy catches, lock and extra strong leather handle. No. 14-F, Tenor, 14 inches, fleece \$13.50

Alligator Imitation Special Cases

ATTRACTIVE and durable.. Special cases of strongly built bodies covered with imitation Alligator skin. Trimmings are all brass, nickel-plated and will not rust; the handle is of leather. Lined with rich silk plush.

V-P Tenor, 14 inches, plush \$25.00

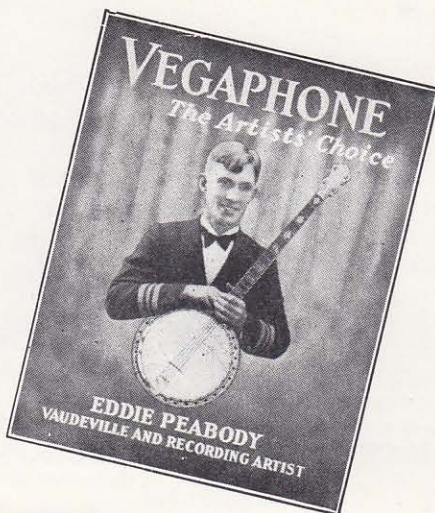




The Artists' Choice



LOUIS CALABRES—Paul Specht's Orchestra



Profit by the
Experience of Others
and make
Vega Your Choice

EDDIE PEABODY

Victor Records—Vitaphone Artist
Guest Conductor, Publix and West Coast
Theatres

LOUIS CALABRESE

Capitol Theatre, New York
Feature Artist—Brunswick Records

JULIAN DAVIDSON

Paul Ash's Orchestra

TONY PETRACCA

Silvertown Cord Orchestra

VIC MONDELLO

Mal Halletts Orchestra

TONY COLUCCI

Tommy Gott's Silver Slipper Orchestra
Formerly with Vincent Lopez and
Roger Wolfe Kahn

BROOK JOHNS

Publix Guest Conductor, Chicago, Illinois

MARTI QUINTO

Arnold Johnson's Orchestra

AL MOREY

Publix Guest Conductor, Forth Worth,
Texas

JOE PETRACCA

Gene Rodemich's Publix Theatre Orchestra

NICK CORTEZ

Ace Brigade's Virginians

BEN BLACK

Publix Guest Conductor, New Orleans, La.

BOB PITTMAN

Warner's Seven Aces

GEORGE B. MENDEN

Hotel Morrison, Chicago, Illinois

FRANK RUNYAN

Hotel Fontenelle, Omaha, Nebraska

HAROLD ELTRIDGE

Publix Theatre, Dallas, Texas



JULIAN DAVIDSON
formerly Paul Ash's Orchestra



TONY COLUCCI—
formerly with Roger Wolf Kahn

*Write for this
free book!*

"VOICE OF VEGA"—a pictorial
review on prominent banjoists.

to The Feature Artist



A SPECIAL VEGA SERVICE is at your disposal for the construction of entirely individual custom built instruments. The critical artist who desires an instrument of extraordinary beauty and distinctiveness may have a banjo built in accordance with his individual taste of design; or, Vega experts will be pleased to submit original ideas with illustrative sketches.

Ultra De Luxe Model

The Vegaphone \$550

The Vegaphone Ultra DeLuxe Model has the standard Vegaphone construction to attain the utmost in brilliance and power of tone, as well as its richness of tonal beauty. Every metal part is heavily gold plated; the flanges are hand-engraved, conforming with their design, and set with many rich, sparkling stones which flash their beauty in the spotlight; the hoop around the sturdily built rim is also hand-engraved. The resonator is an artistically designed feature of this de luxe model; the resonator wall is bound with white fiberloid, handsomely engraved, hand-colored and bordered on the top and bottom with strips of Goldleur, and the back is beautifully engraved over its entire surface of white fiberloid, richly colored and its center set with an engraved Goldleur star that sparkles with the brilliance and richness for which Vega Banjos are known. The neck has every assurance of durability, and is attractively designed with hand carvings and trimmed with strips of Goldleur, and its fingerboard of genuine ebony is inlaid with hand-engraved pearl designs and set with a mother of pearl nut. The peghead, too, has its durable constructive features and its surface is of white fiberloid attractively designed, engraved and hand-colored; the back has also a white fiberloid surface, engraved with a dancing figure in colors; the peghead is bound with strips of Goldleur and the peg-buttons are of rich pearl.

The striking, distinctive and artistic designs of the Ultra DeLuxe Vegaphone; the master-built construction, and the carefully selected materials used present this custom-built model as a work of art.

The Vegavox \$650

The Vegavox Ultra DeLuxe Model has the same construction features as the regular models which have gained such tremendous popularity with the banjo artists—the most beautifully voiced banjo in banjo history. The neck of this Ultra DeLuxe Model is similarly designed, hand-engraved and hand-colored as the Vegaphone Ultra DeLuxe Model, and its peghead is richly set with red stones intermingled in the engraved designs. The back of the resonator is also beautifully engraved and colored over its entire surface of white fiberloid and its center set with an engraved Goldleur star which symbolizes a quality of master craftsmanship that ranks supreme. The 2¾ inch wall of the Vegavox Ultra Model is bound with white fiberloid attractively engraved and colored with dancing scenes and the outer edges are bound with strips of Goldleur.

The Vegavox Ultra DeLuxe Model is a custom-made banjo for the progressive banjo artists. The flashing and artistic appearance plus the beautifully voiced tonal quality of this model gives every owner a feeling of just pride and the assurance that there is "none finer."

Distinction is the foundation of every artists success, and the "tools with which he works" display the value he places on his own success and distinction.



155 Columbus Ave., Boston