

Tonk Bros. Co.

(Incorporated)

623 South Wabash Avenue

Brunswick Building

Chicago, Ill.



World's Largest Exclusive Wholesalers of Musical Merchandise

Our 37th Year

CATALOG NUMBER FORTY-SEVEN

Foreword

FOR thirty-seven years TONK BROS. Co. has enjoyed an ever-growing patronage of particular Musical Merchandise Dealers throughout the world. In each of those years, it has striven to keep ahead of the times, to improve its service and its merchandise, so that it might justify the continued good-will of its many friends.


But we look back over the past two years with more than usual pride, for we feel that more has been accomplished in that time than in any previous two years of our history.

Through the purchase of the entire *Lyon & Healy* Wholesale Small Goods Department and their Piano Material Department, we gained exclusive wholesale selling rights of some of the best-known brands, including such famous names as "WASHBURN," "AMERICAN-PROFESSIONAL," "AMERICAN CONSERVATORY," and many others.

In addition to this important deal, we purchased the entire Wholesale Small Goods Department of the *Artophone Corporation* of St. Louis, which gave us control of many more good lines. The result was \$1,000,000 in sales during the year 1929, compared with less than a half a million only two years ago; and through it all the same spirit of loyalty and service prevails; those inherent qualities which had their beginning thirty-seven years ago, under the leadership of the late Charles J. Tonk, and which we are endeavoring with all our time and effort to perpetuate.

A heart-felt "Thank You" goes out to all those dealers who have helped us in accomplishing this outstanding success.

TONK BROS. CO.

 World's Largest Exclusive Wholesalers of Musical Merchandise

National String Instruments

Why NATIONAL Excels in Beauty ∴ Tone
Volume ∴ and Durability

Every NATIONAL String Instrument gives instant, proud response to the lightest touch. And only in these instruments will be found such rare beauty of tone. This and their powerful voicing combine with their attractive and unusual appearance to make them very valuable for stage and concert work—they never fail to favorably impress an audience. The beautiful body, made from pure German silver delectably gauged and highly polished, will not tarnish, rust or deteriorate in any way, and with ordinary care will last a lifetime. Every product of the National String Instrument Corporation bears the trademark "NATIONAL."

Mandolin
Style No. 1
Price \$65.00



NATIONAL Silver Mandolins

Due to its tremendous power and volume the new NATIONAL Silver Mandolin may be used to lead the largest orchestra. It makes a wonderful double for the tenor guitar or violin player.

- Style 1 (plain). Each \$65.00
- Style 2 (beautifully hand engraved).
Each \$80.00
- Style 3 (artistic floral design).
Each 95.00

The NATIONAL Silver Ukulele

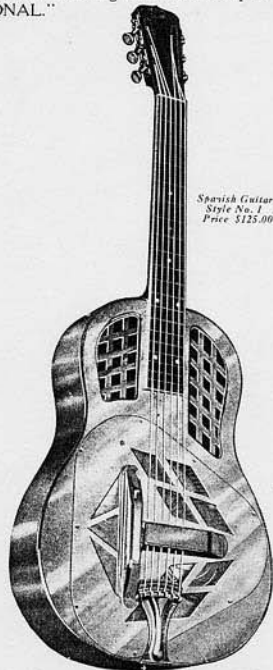
Thousands of Ukulele players have pronounced the NATIONAL Silver Ukulele an instrument that will delight you. It has the same beautiful German silver finish as our Guitars and Mandolins, and the unique NATIONAL feature of amplifying the volume while retaining all the softness and beauty of tone.

- Style 1 (plain). Each \$55.00
- Style 2 (beautifully hand engraved).
Each \$70.00
- Style 3 (Artistic floral design).
Each 85.00

Ukulele
Style No. 1
\$55.00



Spanish Guitar
Style No. 1
Price \$125.00



NATIONAL Spanish and Hawaiian Guitars

Each of these two types of guitar is a leader in its field; in no other instruments will be found such rare beauty of tone and astonishing power and volume. They provide the player with a perfect medium for the complete expression of his artistry; and are constructed to give years of service under the most exacting conditions.

- | | |
|---|----------|
| | Each |
| Style 15 Spanish German Silver, plain | \$125.00 |
| Style 25 Spanish beautiful hand engraved | 145.00 |
| Style 35 Spanish (De Luxe) Artist's floral design | 165.00 |
| Style 45 Spanish (Artist's model) elaborately engraved, fancy
pearl, etc. | 195.00 |
| Style 1H Hawaiian German Silver, plain | 125.00 |
| Style 2H Hawaiian beautiful hand engraved | 145.00 |
| Style 3H Hawaiian (De Luxe) Artist's floral design | 165.00 |
| Style 4H Hawaiian (Artist's model) elaborately engraved,
fancy pearl, etc. | 195.00 |

Tenor and
Plectrum
Guitar
No. 1
Price
\$175.00 and
\$200.00



NATIONAL Silver Plectrum and Tenor Guitars

Professionals prefer NATIONAL Silver Plectrum and Tenor Guitars because, for orchestra work, they retain the sweet tone of the guitar while yielding the volume of the ordinary banjo.

- | | |
|--|----------|
| TENOR | |
| Style 1 (plain) | \$ 75.00 |
| Style 2 | 95.00 |
| Style 3 | 115.00 |
| PLECTRUM | |
| Style 1 (plain) | 80.00 |
| Style 2 (beautifully hand en-
graved) | 100.00 |
| Style 3 (artistic floral design) | 120.00 |

Front View of
Hawaiian Guitar
Style No. 1
Price \$125.00

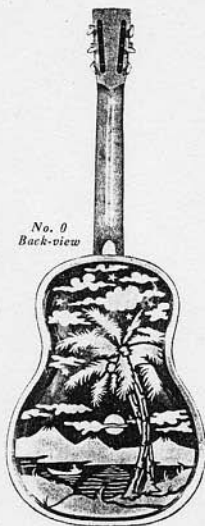


NOTE:—Above Prices are NOT Subject to Our Regular Discount! Refer to Discount Sheet!

National Special Style O Silver Guitar
EACH \$62.50

A Leader and a "NATIONAL" Featured Product

This low price is made possible through our own revolutionary method of production. The construction throughout is up to the "National High Standard." Made from a high grade Alloy Metal heavily nickel-plated, with a beautiful two-tone Silver Finish, Rock Maple Neck, Ebonized Maple Fingerboard, Pearl Position Dots, etc.

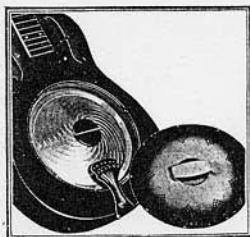


No. 0
Back-view



No. 0
Front-view

The Heart of the Instrument



Everyone marvels at the tremendous power, the volume and the tone quality of these instruments—little wonder that stage and concert performers are so enthusiastic about them.

The vital feature of construction to which this power may be attributed is found in the diaphragm or resonator illustrated. Just as the modern dynamic radio amplifies every tone from the highest note of the violin to the lowest

note of the mighty organ, the dynamic construction of National String Instruments amplifies the true, sweet tones produced by the strings, yielding a quality and volume of tone heretofore considered impossible in a string instrument. This dynamic resonator principle is found only in NATIONAL String Instruments and is fully protected by our patents.



National Triolian Instruments

like all other NATIONAL instruments, possess great power and volume while sacrificing nothing of tone quality.

These Triolian instruments are all made from an alloy metal (which will not rust) finished in two-tone brown walnut and polychrome.

Latest dynamic principles of amplification in this instrument make it possible to produce more volume than the banjo while retaining the sweet tone of the guitar—an invaluable aid whether playing for dance, concert, records, sound pictures or radio.

Triolian Spanish and Hawaiian Guitars	
(As illustrated below.)	Each.....\$45.00
Triolian Tenor Guitars	
(As pictured.)	Each.....\$37.50
Triolian Mandolins and Ukuleles	
Triolian Mandolin.	Each.....\$40.00
Triolian Ukulele.	Each.....25.00

Cases to fit National Instruments

<i>"Utility" Style Keratol covered on Chipboard body, side opening</i>	
No. 282 To fit Spanish or Hawaiian Guitar.	Each.....\$9.50
No. 278 To fit Tenor Guitar.	Each.....8.00
No. 276 To fit Plectrum Guitar.	Each.....8.40
No. 219 To fit Mandolin.	Each.....5.50
No. 283 To fit Ukulele.	Each.....5.00
<i>"Kant-Krack" Shell Keratol covered Flannel lined</i>	
No. 880 To fit Spanish or Hawaiian Guitar.	Each.....\$14.50
<i>3 Ply "Veneer" Style covered with best grade Keratol silk plush lined</i>	
No. 882 To fit Spanish or Hawaiian Guitar.	Each.....\$23.30
No. 878 To fit Tenor Guitar.	Each.....21.70
No. 876 To fit Plectrum Guitar.	Each.....22.50
No. 431 To fit Mandolin.	Each.....18.00
No. 560 To fit Ukulele.	Each.....15.00



NOTE:—Above prices on NATIONAL STEEL INSTRUMENTS NOT subject to our regular discount. Refer to discount sheet

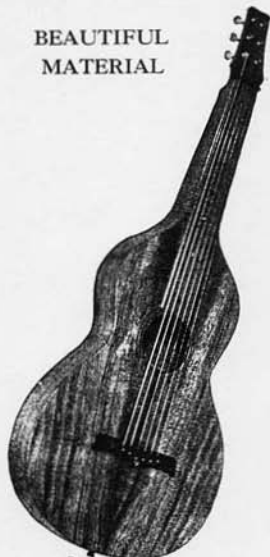
PRICES ON CASES SUBJECT TO REGULAR DEALER'S DISCOUNTS

BEAUTIFUL
MATERIAL

Weissenborn Hawaiian Steel Guitars

EXCELLENT
WORKMANSHIP

The Weissenborn Hawaiian Steel Guitar—internationally known—is constructed scientifically under the most strict supervision. The special feature of the Hollow Neck enables the artist of today to accomplish every known phase of guitar playing with the maximum tonal volume of quality.



Style No. 1

STYLE ONE
Back and sides of selected Koa. Top of selected Koa or of spruce if desired. Fingerboard of selected Koa inset with round selected pearl position dots and fretted with white holly. Bridge of hardwood with white pins. Soundhole surrounded with three rings of inlay. Finish of the highest grade and hand-rubbed to a gloss. Depth of body, 3 inches.
PRICE \$40.00 EACH



Style No. 2

STYLE TWO
Back and sides of selected Koa. Top of selected Koa or spruce if preferred. Fingerboard of selected Koa inset with fancy selected pearl position marks and fretted with white holly. Top and bottom edges surrounded with black binding. Fingerboard bordered with white binding. Soundhole surrounded with rope and ring of genuine wood marqueterie. Finish of highest grade and hand-rubbed to a gloss. Depth of body, 3 inches.
PRICE \$56.00 EACH

STYLE THREE
Entire body—top, bottom and sides—made from specially selected beautifully marked genuine Koa. Fingerboard of specially selected Koa with extra fancy position marks and fretted with white holly. Edges of top of body, also fingerboard and soundhole, surrounded with rope binding. Beautiful finish hand-rubbed to a high gloss throughout. Depth of body, 3 inches.
PRICE \$67.50 EACH

STYLE FOUR
Entire body—top, bottom and sides—made from specially selected and most beautifully marked Koa. Fingerboard of specially selected Koa with extra fancy position marks, fretted with white holly. Edges of top and bottom of body, also fingerboard, neck and head, completely surrounded with rope binding, and rich marqueterie around soundhole. A magnificent instrument of the most beautiful finish and appearance, and tone of wonderful quality and carrying power. Depth of body, 3 inches.
PRICE \$79.00 EACH

NOTE

The above listed Guitars will not fit into regular guitar cases. For descriptions and prices on special cases, see next page.



Style No. 4



Style No. 3

Weissenborn Spanish Model Guitars

(Can be converted into Hawaiian Guitars by attaching Extension Nut)

Every Weissenborn Instrument is fully guaranteed as to workmanship and material.



Style No. A

STYLE No. A

Entire body of selected Koa. Fingerboard of perfect scale and of selected ebony artistically marked with pearl position dots and fretted with genuine German silver frets. Soundhole surrounded with three rings of inlay. Finish of the highest grade and hand-rubbed to a gloss. Depth of body, 4 inches.

Price \$45.00

STYLE No. B

Beautifully figured Koa wood throughout. Top edge bound with black celluloid. Soundhole is inlaid with fancy purfling. Genuine ebony fingerboard, guaranteed correct and perfectly adjusted, inlaid with pearl position dots. Entire instrument is hand rubbed to a medium gloss finish.

Price \$56.00

STYLE No. C

Carefully selected and beautifully figured Koa wood throughout. Top edge and soundhole inlaid with fancy wood purfling. Brown ebony fingerboard. Perfectly adjusted and absolutely correct. Fancy patent heads. This instrument possesses a marvelous tone and will please the most discriminating player.

Price \$70.00

STYLE No. D

Entire instrument made of specially selected Koa of beautiful design. Entire body and neck surrounded with rope binding. Fingerboard of special ebony and inlays of perfect pearl; frets of genuine German silver, and of perfect scale. Artistic patent heads. The absolute achievement in guitars—an instrument of exceptional beauty and designed for the artist.

Price \$84.00



Style No. D

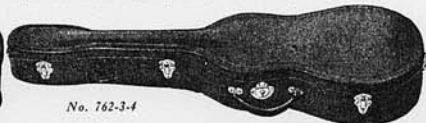
Cases to Fit Weissenborn Hawaiian Guitars

NOTE:—Cases listed below fit WEISSENBORN Hawaiian Instruments only. For cases to fit regular model Guitars, see page 114



No. 761

No. 761 Regular stiff canvas case, covered with medium brown canvas and bound with black leather cloth all around. Good reliable handle. Each \$3.90



No. 762-3-4

No. 762 Good reliable veneer shell, covered with excellent grade of black keratol, steel valance and nickel plated trimmings. Lined inside with good grade of flannel. Each.....\$22.00

No. 763 Same as No. 762, but entire case lined with velvet. Each..... 24.50

No. 764 Same as No. 762, but entire case lined with fine grade of silk plush. Each..... 34.00

No. 761 Utility style case, top opening, covered with good reliable black keratol and edges are sewed with black leather. Case is flannel lined and has a good substantial handle. Each... 9.00

Large Size Ukuleles

No. 98 Tenor Ukulele. Slightly larger than the Concert Size. Entire instrument finished in medium mahogany color, somewhat shaded. Dull finish. Top edge bound with white celluloid. Equipped with patent pegs. Marvelous tone and big seller. Each\$6.00

No. 91 FULL TENOR SIZE UKULELE. Length over all, 22 inches. Has proven to be a big seller on account of the deep mellow tone. Entire instrument made of carefully selected birch and sides and back are finished in light Koa color with neck finished to match, whereas the top is finished in its natural white color. The fingerboard is of white pearlette and frets are adjusted correctly. Entire instrument finished in high gloss. Each....\$6.80

No. 108 Bass Ukulele. Somewhat larger than the Tenor Ukulele. Entire instrument finished in dull mahogany, slightly shaded. Both edges bound with white celluloid, ebony finished extension fingerboard. Patent pegs; deep marvelous tone. Each\$10.00



No. 108
Bass Size



No. 91
Tenor Size

Famous Weissenborn Ukuleles

General Description

These fine UKULELES are made from genuine HAWAIIAN KOA which has been thoroughly seasoned and dried and thereby the possibility of cracking or splitting is practically eliminated. The tone, correct adjustment, and the fine finish of these instruments are out-standing features.

No. 1 Genuine KOA
Wood body with a neck especially reinforced at joint. Guaranteed perfect fretting. Direct tension bridge. Sound hole bound with white grain celluloid. Hand rubbed gloss finish throughout. Each\$10.00

No. 3 Very carefully selected flamed Koa wood throughout and entire instrument in hand rubbed gloss finish. The back and top edge as well as the fingerboard and head piece are bound with fancy purfling, whereas the sound hole is bound with white celluloid. Equipped with a good grade of friction pegs. The instrument has a wonderful appearance and a beautiful tone. Each.....\$30.00

No. 2 Same description as style No. 1 except that the top edge and the sound hole are bound with fancy rope binding. Each\$15.00

No. 10 FULL SIZE TENOR UKULELE. Designed and built especially to meet the demand for a large size Ukulele. Beautiful flamed KOA wood throughout and hand rubbed gloss finish. Top edge, as well as the fingerboard are bound with fancy wood purfling. Sound hole is inlaid. On account of the large size, the instrument has a deep rich tone. Correct fingerboard inlaid with position dots. Each\$20.00



No. 1



No. 3



No. 10

Tonk "MAPELIENE" Family



No. 8020

A complete, clean-cut and well built line of Plectrum instruments, finished in natural maple color and graining. Attractively decorated as illustrated. Fingerboards are made of silver celluloid with fancy black position figures. Something entirely new with an unusual eye appeal and each instrument is a wonderful value. To see them is to want to possess one.



No. 910

- No. 8020 Mapeliene Guitar, standard size. Each \$15.00
 No. 910 Mapeliene Tenor Guitar. Each 15.00
 No. 475 Mapeliene Flat Back Mandolin. Each 15.00
 No. 93 Mapeliene Tenor Ukulele. Each 8.00

Brighten up your stocks with these attractive instruments. You will find them ready sellers and very satisfactory in workmanship, adjustment and tone.



No. 475



No. 93

Le Domino

No. 18
Guitar



No. 911
Tenor Guitar



Tiple
No. 801



No. 575 Le Domino Banjo Ukulele.
The best Banjo Ukulele offered at this price. Full toned and very snappy. Well made from seasoned birch. Shaped resonator. Twelve nickel-plated hooks. Heavy pattern brass nickel-plated top hoop.
Each \$15.00

No. 575
Banjo Ukulele



No. 4500
Mandolin



The well known Le Domino Guitars are made with either white or dark tops. Concert size. Neatly trimmed with white celluloid and decorated with domino decalcomania. Ebonized bridge with white pins.

- No. 18 Dark top Le Domino Guitar. Each \$15.00
- No. 19 White top Le Domino Guitar. Each 15.00
- No. 911 Le Domino Tenor Guitar. Regulation size with full 23-inch scale. Ebonized bridge with white pins. Contrasting white celluloid binding around sound hole, both edges and fingerboard. Le Domino decorations as pictured. Each 15.00
- No. 4500 Le Domino Flat Mandolin. An outstanding mandolin, well made and accurately adjusted. White celluloid guard plate and white celluloid bindings to correspond with other Le Domino numbers. Nickel-plated patent heads and tailpiece. Each 15.00



No. 125-127
Ukuleles



Le Domino Ukuleles in concert and tenor sizes. Made of well seasoned birch finished in jet black with contrasting white celluloid bindings as illustrated. Good quality strings. Patent pegs.
No. 125 Concert Size Le Domino Ukulele... \$ 7.50
No. 127 Tenor Size Le Domino Ukulele... 12.00
No. 801 Le Domino Tiple. A beautiful instrument in jet black finish with contrasting white celluloid trimmings. Ebonized bridge. Hardwood neck. Nickel-plated patent heads. Each \$15.00

Tenor Guitars

Makes Doubling Easy!

The Tenor Guitar was designed to meet the growing demand for a banjoist's "doubling" instrument. The modern dance orchestra musician must be versatile. He adds to his value with any orchestra by his ability to play more than one instrument.

The Tenor Guitar has the true tone and construction of a guitar, yet the tuning and fingering remain the same as that of the banjo or ukulele—whichever tuning is chosen. The banjo or "uke" player demonstrates his versatility by playing an entirely different instrument without extra practice.

An excellent instrument for entertainment at home—at parties—either for voice accompaniment, or solo playing. Used professionally by many vaudeville artists.

No. 890 Back, sides and top of selected birch; hardwood neck, ebonized fingerboard; pearl position dots; sound hole and top edge bound with white celluloid. Shaded mahogany color—satin rubbed finish. Each \$10.00

No. 900 Back and sides of figured birch; top of clear spruce; hardwood neck; fine ebonized fingerboard; ebony bridge; patent tuning keys. Finished in dull satin walnut color. Each \$15.00

No. 901 Same general construction as No. 900 except that the back and sides are of genuine mahogany. Each \$21.00

No. 825 A Lute Shaped Tenor Guitar with fine birch back and sides, in walnut finish. White spruce top. Both edges and sound hole bound with black celluloid. Pearlette celluloid fingerboard and head piece. Metal parts nickel-plated. Ebonized bridge. Price \$15.00

"Mapeliene" Tenor Guitar

No. 910 A very beautiful number and low in price. Striped birch back and sides finished in natural maple color. Maple finish hardwood neck. Sound hole and top edge inlaid with black and white wood block inlaying and all edges bound with black celluloid. Fingerboard of silver celluloid with contrasting black position figures. Gold celluloid head piece. Top decorated with large stencil design. Price. \$15.00

"Le Domino" Tenor Guitar

No. 911 A jet black beauty, made up along the lines of the famous Le Domino Guitar. Well constructed from the best materials obtainable. All edges and fingerboard trimmed with contrasting white celluloid. Head piece, fingerboard and top decorated with domino decalcomania. Full 23-inch scale. Ebonized pin bridge with white bridge pins. Good quality pegs and strings. Price \$15.00

Tenor Guitar Cases

No. 90 Regular canvas case. Each \$3.00
No. 91 Regular "Utility" case. Black Keratal side opening. Each \$7.50



No. 890



No. 900



No. 825



No. 910



No. 911

For Genuine Washburn Tenor Guitars, see page 105

Famous Roy Smeck Vita-Guitars—Tenor and Plectrum Guitars and Cases

ROY SMECK
"Wizard of the Strings"

Roy Smeck, sponsor of the Vita-Guitars, Vita-Uke, and other instruments of this series, holds popular favor unique among stringed instrument artists. Featured in the very first Vitaphone production—featured in picture house presentations—a headliner in vaudeville—maker of records for Victor, Columbia, Edison, and others—author of numerous song and instruction books, he has aptly won his title of "The Wizard of the Strings." His instruments win the praise and patronage of an enthusiastic public who know and applaud him.

Vita Mandolin

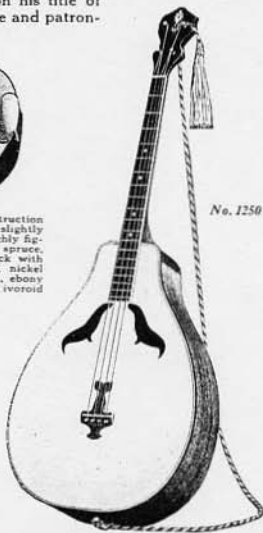


The unusual design and careful scientific construction give it easy action and brilliancy of tone, though slightly smaller than the usual mandolin. Backs and sides highly figured mahogany, sounding board selected close-grained spruce, slightly arched and correctly braced. Mahogany neck with rosewood veneered head piece. Ebonized fretboard, nickel silver frets and pearl position dots. Bone string nut, ebony bridge with bone saddle. Nickel-plated patent heels, ivoroid buttons.

Nickel-plated wrist rest tailpiece. The scale, or string length from string nut to bridge, is 14 inches. Beautifully finished in rich brown mahogany, hand rubbed and polished. An unusual value at the price.
No. 325 Roy Smeck Vita-Mandolin.....\$18.00
Each.....\$5.00
No. C-325 Leatherette Carrying Case (side opening).....\$5.00



No. 1250



No. 1252

The Roy Smeck Vita-Guitars

Tonal qualities differing from all ordinary guitars result from the unique design; the distinctive "Aero-Bridge" and the "seal" sound opening in the new Vita-Guitar. The fine balance between treble and bass registers and the sweetness of tone immediately satisfies the most critical player.

The air chamber is extra large, equivalent to the ordinary concert guitar.

Back and sides highly figured fiddle-back flamed mahogany, beautifully stained and finished. Sounding board slightly arched, selected close-grained spruce, scientifically braced and reinforced. Solid mahogany neck with rosewood veneered head piece and pearl ornament. Oval ebonized fret-board, celluloid bound, inlaid with nickel silver frets and fancy pearl position markers. Trim black and ivory celluloid edging on body. New Style Aero-Bridge of rosewood, fitted with pearl-inlaid bridge pins. Finished throughout in lacquer, hand rubbed and richly polished.

The standards of workmanship and finish would warrant a higher price than is asked.

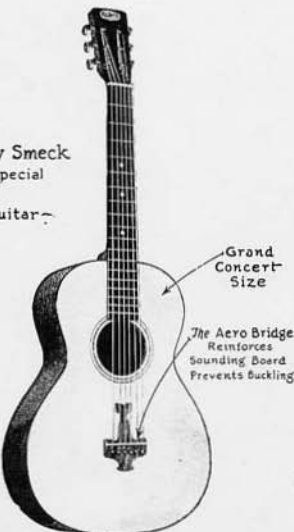
No. 1250 Roy Smeck Vita-Guitar.....\$35.00
Each.....\$5.00
No. C1250 Leatherette Carrying Case (side opening). Each.....\$5.00

The Roy Smeck Grand Concert Guitar

A conventional model large size guitar, especially fine for those who need power without sacrifice of beauty of tone. New Aero-Bridge (patent pending) guards against buckling or pulling, and permits using more sensitive top or sounding board. Back and sides highly figured mahogany, finished in distinctive brown mahogany lacquer, hand rubbed and polished.

No. 1251 Roy Smeck Grand Concert Guitar, Each.....\$30.00
No. C1251 Leatherette Carrying Case (side opening). Each.....\$8.00

Roy Smeck
Special
Guitar



No. 1251

The Tenor Guitar— Plectrum Guitar

Permits the banjoist to "double" on an instrument with the sweetness and resonance of the guitar, but with the method and "technique" of his own favorite banjo. The tenor and plectrum guitars are four-stringed instruments, played like the banjo. The tenor guitar may also be tuned as a ukelele, and is thus welcomed by the advanced "uke" player, who finds in it an instrument of great volume making possible a more free display of his talents.

In these guitars will be found the feature of construction, beauty and perfect intonation of the standard Vita-Guitar. The same fine mahogany over-size body with selected close-grained spruce top, the aero-bridge, the "seal" sound openings—only the neck and fret-boards differ.

No. 1252 Roy Smeck Tenor Guitar for the present tenor banjo player. 23-inch scale, 19 fret fingerboard. Latest type wear pegs. Each.....\$35.00
No. C1252 Leatherette Carrying Case (side opening). Each.....\$8.00
No. 1252 Roy Smeck Plectrum Guitar, for the present player of a plectrum or 5-string banjo. 27-inch scale, 22-fret fingerboard. Latest type wear pegs. Each.....\$35.00
No. C1252 Leatherette Carrying Case (side opening). Each.....\$8.00

Famous Johnny Marvin Ukulele

A larger "Uke" with deeper tone and greater carrying power—that's what Johnny Marvin wanted for his stage appearances and Victor Record making. We've produced it in this new model. Ukulele players, professional and amateur, will welcome it! Finished mahogany or koa, like the back of an old violin—a fret-board of smooth rose-wood, fretted so that the fingers glide over it; a headpiece lustrous as pearl; the new "Aero-Bridge" a perfection of hand-rubbed and polished finish; finely



No. 688

gauged strings and the best fittings; with a background of thirty-six years of fine craftsmanship that assures a superlative instrument.
No. 688 Figured mahogany, nickel-plated patent pegs with ivory celluloid buttons. Each.....\$18.00
No. 689 Prince of Wales model, finest selected Hawaiian Koa, gold plated pegs. Each.....\$23.00

Ukuleles

NEW MODELS—DESIGNED AND USED BY LEADING ARTISTS.

Roy Smeck "Vita-Ukulele"



PATENT PENDING
No. 522

No. 522 "Vita-Ukulele." Endorsed and used by ROY SMECK. Back, sides and neck made of genuine mahogany. Top is carefully selected spruce, finished in natural color. The instrument has the shape of a Lute with very unique sound holes. Handsome appearance. Marvellous tone. Instrument comes in hand rubbed finish throughout. Each.....\$12.00

Popular "Le Domino" Tenor Ukulele



No. 127

No. 127 The "LE DOMINO" TENOR UKULELE has been on the market a comparatively short time but makes friends wherever it goes. The large body is responsible for the mellow deep tone which is so much in favor with Ukulele players. The instrument is finished in dull black coloring throughout, and top, as well as fingerboard, are equipped with the well known "DOMINO" decalcomania designs. Top and back edges, as well as the fingerboard, are bound with white celluloid. Bone saddle and bone nut. Each.....\$12.00

The Old Reliable "Tonk American" Ukulele



No. 130

No. 130 The Famous "Tonk American." Full concert size, designed and made for us exclusively. Spruce top finished in natural color, walnut extension fingerboard. Bone nut and saddle. Correctly adjusted—wonderful tone. Equipped with patent pegs. Each...\$9.00

Popular "Le Domino" Concert Ukulele



No. 125

No. 125 "Le Domino" Ukulele needs no introduction. Makes friends wherever it goes. Marvellous tone; wonderful appearance. The instrument is CONCERT SIZE finished in black throughout. Both edges bound with white celluloid; decorated with DOMINO design. Fingerboard correctly adjusted and bound with white celluloid. Each.....\$7.50

Washburn Guitar

Features

Tone is the prime requisite of an instrument. Without it all else—construction, features, and workmanship—is purposeless. Two things govern the quality of the tone—the wood and the design.

Much of the reputation of Stradivarius and Amati, who will live through the centuries as the world's master violin builders, rested upon the attention which they gave to the selection of woods. They took as much pride in the grain and figure of the maple and spruce used as in their carving. But above this was the insistence placed upon seasoned wood, sensitive to the vibrations of the strings. No less insistence is made in our factory. From a selection of 25,000 feet of choice spruce and maple, an expert often rejects all but 1,000 feet of lumber. Though much of what he discards would seem suitable for use, his standards are so rigidly high that only such a small amount meets them.

This wood is aged and seasoned in special steam kilns until the moisture content specified for Washburn Guitars is reached. The owner of a Washburn is rarely troubled by the woods in it even when it is subjected to extremes of temperature. There is no splitting of top or bottom to ruin the beauty of the instrument or to impair the quality of the tone. Neither is there any shrinking or swelling of the wood to distort proportions, to leave unsightly openings at the joints. In fact, the very shape and dimensions of the top, side, and bottom of the bodies of Washburn Guitars are reached by scientific calculations as to the surface resistance, tensile strength, and lateral response to temperature and moisture.

There is a reason in the construction of the parts of the Washburn. Each contributing factor is carefully analyzed and every precaution taken to attain and retain perfection. This care in construction is discovered again and again, as one examines the Washburn Guitar. For instance, the very modeling of the bouts is calculated in advance. The resonating chamber must produce the maximum of a rich, sweet tone. The volume of air, its vibrations and those of the surrounding surfaces, the planes of the sides and their areas—these are but a few of the factors studied in order to develop the Washburn tone which is so distinctive, so unrivaled.

Again, another very essential item, the top of the body, was perfected only after a long process of research and elimination. It immediately occurs to the musician that not only vibratory sensitivity but strength are imperative in this part. To gain both without sacrifice of the other is a matter of delicate balance of free and reinforced areas.

A study of the illustration will reveal the cunningly placed reinforcement of the Washburn top. Each little brace, so queerly arranged, was done so only after continued experiment indicated the proper position. As a result the top is fully responsive to the lightest touch of the strings and yet it is a marvel of strength.

Genuine appreciation of fine workmanship is the un-failing response that Washburns win from those who go over them point by point. There are so many real reasons apparent. Each part is refined and perfected in an unusual manner. Even the neck, which to the professional musician may seem of minor importance, is of special construction to gain the utmost in beauty, rigidity and strength. From a standpoint of beauty or dependability the Washburn neck is unexcelled.

Other Improvements

The body is symmetrical, perfectly balanced and easy to handle.

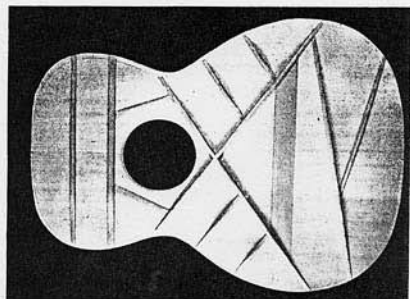
The fingerboard is fretted true to the thousandth of an inch, each fret finished perfectly smooth and easy to finger.

The scale is guaranteed scientifically correct.

The machine heads are of improved non-slip type.

The varnish is thin transparent and French polished. It allows the freest possible vibration of the wood, and shows the graining.

The grace and beauty of the instrument is enhanced by the artistic celluloid trimmings, genuine ebony fingerboards, pearl position dots and German silver frets.



Illustrating the reinforcing of the top of the Washburn Guitar

The WASHBURN "DE LUXE" Guitar



Here is the instrument for the concert artist who knows the value of appearances and for the amateur who takes the greatest pride and interest in his art and in his instrument. The Washburn "De Luxe" possesses a richness of appearance and a finished beauty that is distinctively its own.

Body—Selected rosewood sides; two-piece selected rosewood back with stripes of black, white and black inlaying through center; fine grained white spruce top, cross ribbed; top and back edges bound with white and black celluloid; outer edges bound with ivorine neat inlay around sound hole improved ebony bridge pearl inlaid, with bone saddle; bone fingerboard nut; ivory celluloid bridge pins; ivory celluloid end pin. Top ornamented with gold design. Hand rubbed satin finish throughout.

Neck—Genuine mahogany neck; oval ebony fingerboard; pearl position dots; ivorine bound artistically designed pearl inlaying in rosewood head piece; gold-plated patent heads with pearl buttons.

Concert Size

No. 5203 (No case included.) Each.....\$115.00

Grand Concert Size

No. 5238 (No case included.) Each.....\$120.00

Auditorium Size

No. 5234 (No case included.) Each.....\$135.00

NOTE:—For Cases to fit above Guitars, see page 114

The WASHBURN "ARISTOCRAT" Guitar



A high standard of excellence in workmanship is evident in every detail of this instrument. A most careful inspection will not disclose a single flaw. The beautiful finish of the wood, its remarkably evenly matched grain, the artistic decorations, all assist in giving it a charming, attractive appearance. As in all WASHBURN instruments, however, the "Aristocrat" has been built primarily for tone.

Body—Selected rosewood back and sides, and carefully selected spruce top. Satin finish all over. Top edge bound with alternating black and white celluloid, ivorine on outside. Back edge bound with white ivorine. Black, white and black purfling down center of back. Edge of soundhole bound with black and white celluloid, encircled by two large rings. Bridge of genuine ebony with bone nut and ivorine pins. Ivorine end pin.

Neck—Genuine mahogany with ivorine heel plate. Veneered headpiece inlaid with pearl. Oval fingerboard made of genuine ebony bound with ivorine inlaid with pearl position dots. Nickel-plated patent heads with ivorine buttons.

No. 5202	Concert size (No Case included)	\$70.00
No. 5237	Grand concert size (No Case included)	75.00
No. 5239	Auditorium size (No Case included)	85.00

NOTE:—For Cases to fit above Guitars, see page 114

The WASHBURN "CLASSIC" Guitar



This model has been designed for the artist who looks to his guitar primarily for tone and durability. Not that he is unresponsive to physical beauty, for this style, which is very popular with both the professional and amateur musician, presents a design of grace and exquisite finish, but with less ornate treatment.

Body—Beautiful figured mahogany back and sides with selected close grained spruce top. Hand rubbed satin finish all over. Top edge bound with alternating black and white celluloid, white outside. Back edge bound same as top. Strips of black and white purfling down center of back. Soundhole bound with white and black celluloid, surrounded by 2 larger rings.

Neck—Fine mahogany, rosewood capped with veneered headpiece. Ebony fingerboard inlaid with pearl position dots. Bone nut. Nickel-plated patent heads with black buttons. Special model ebony bridge, bone saddle, with ivory heads. White celluloid end pin.

No. 5201	Concert size. Each.....	\$35.00
No. 5236	Grand concert size. Each.....	40.00

NOTE:—For Cases to fit above Guitars, see page 114

The WASHBURN "INSPIRATION" Guitar



Made by the same workmen and under the same rigorous supervision as the other styles, this model has been produced in a successful endeavor to give the musician a fine guitar at small cost. There has been an elimination of expensive trimmings. It has a tone of very fine musical quality. Workmanship is of high order.

Body—Mahogany back and sides with fine close grained spruce top. Satin finish all over. Top edge bound with 3 ply alternating black and white celluloid. Soundhole bound to match. Black and white inlay down center of back.

Neck—Mahogany with rosewood heel plate. Ebonized oval fingerboard with pearl position dots; bone nut; fine nickel-plated patent heads with white buttons. Ebony bridge with bone saddle and ivory pins.

No. 5200	Concert size.	Each.....	\$25.00
No. 5235	Grand concert size.	Each.....	30.00

NOTE:—For Cases to fit above Guitars, see page 114

The WASHBURN Tenor Guitars

The Tenor Guitar is an invention of our Washburn expert. It is offered in the Washburn line in very beautiful models as illustrations demonstrate. The strict standards of Washburn construction have resulted in an instrument of the highest type.

Body—Beautiful mahogany back and sides with selected spruce top, hand rubbed satin finish all over. Top and back edge bound with alternating white, black and white celluloid, stripe of narrow black and white inlay down center of back, sound hole inlaid with 3 rings.

Neck—Fine mahogany, rosewood capped veneer head piece. Ebony fingerboard inlaid with pearl position dots. Bone nut. Ebony bridge with ivory pins. Nickel-plated geared pegs with ivory buttons. Twenty-three-inch string length.

No. 5225 \$35.00



No. 5225



No. 5226

The Tenor Guitar is played exactly the same as the Tenor Banjo, it possesses the richness and beauty of the Guitar. Every tenor banjoist will want one. It opens up to him the fascinating qualities of the Guitar without the necessity of learning to play a new instrument.

Body—Selected rosewood back and sides, fine grained white spruce top. Top edge inlaid with black and white inlay bound with ivory, back edge bound with ivory, narrow black and white inlay down center of back, 3 ring inlay around sound hole, hand rubbed satin finish throughout.

Neck—Genuine mahogany. Ebony fingerboard inlaid with fancy pearl position dots. Rosewood veneer capped head piece inlaid with pearl. Bone nut, ebony bridge inlaid with pearl on each side, with ivory bridge pins, ivory end pin. Geared nickel-plated pegs with ivory buttons, twenty-three-inch string length.

No. 5226 \$50.00

Cases to Fit "Washburn" Tenor Guitars

Washburn Tenor Guitars are slightly larger in size and therefore require special cases.

No. 91½ Utility style, side opening case. Stiff chipboard body covered with walrus grain Keratol, leather bound edges, flannel lining. Each \$ 7.50

No. 92 3-ply veneer shell, covered with the best quality of black Keratol, lined with fine silk plush, nickel-plated lock and key. Each 26.70

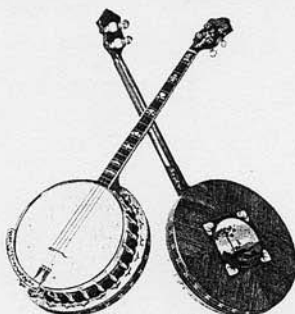
For Cheaper Styles of Tenor Guitars, see page 106

New WASHBURN Professional Banjos



Syncopator Model

- No. 5181 Mahogany finish maple shell; 10 $\frac{3}{4}$ inch head, patented tone amplifier; large overlapping convex resonator with fancy colored wood design inlaid in center; latest type slender neck, three-ply construction. All metal parts heavily nickel-plated. Furnished with beautiful Keratol case, silk plush lined \$125.00
- No. 5156 Plectrum style 125.00
- No. 5106 Regulation 5 string Banjo 125.00



De Luxe Model

- No. 5185 This model is the same as No. 5183 except that the metal parts are quadruple gold-plated and hand burnished. A magnificent instrument. Furnished with Keratol case, silk plush lined \$190.00
- No. 5161 Plectrum style. Furnished with beautiful Keratol case, silk plush lined 190.00



Aristocrat Model

- No. 5183 Genuine figured black walnut shell; 10 $\frac{3}{4}$ inches; special patented tone amplifier device built in; large convex resonator with beautiful rustic wood picture inlaid in center; graceful slender neck for fast, smooth, easy action; three-ply construction; headpiece inlaid with colored pearl. All metal parts heavily nickel-plated. Furnished with beautiful Keratol case, silk plush lined \$150.00
- No. 5158 Plectrum style 150.00
- No. 5108 Regulation 5 string 150.00



Super De Luxe Model

- No. 5187 Specially selected figured black walnut; 10 $\frac{3}{4}$ -inch head; patented tone amplifier; large overlapping convex resonator inlaid with beautiful rustic scene in colored wood; improved slender tapering neck, especially designed for speedy performance; three ply construction. Headpiece and fingerboard elaborately inlaid with colored pearl; beautiful pearl patent pegs, geared type. All metal parts heavily gold plated and exquisitely engraved; engraving is offset in white gold. A banjo fit for a king. Furnished with beautiful Keratol case, silk plush lined \$250.00

New WASHBURN Professional Banjos

Made primarily for orchestra work, where brilliant, far-carrying musical tone is required.

The question often arises as to what constitutes "correct banjo tone." Is it a quick, sharp tone—the hit—and quit kind? Is it a thin, sweet tone? Is it a drum tone?

Who decided what the "Correct" tone is?

In designing Washburn Banjos the demands of prominent orchestra banjoists were kept foremost in mind. First, they should have a pleasing musical quality of tone. Second, the tone should be big, resonant, far-carrying. Third, the neck of the banjo should lend itself gracefully to the hand, and permit fast playing with perfect ease.

Our acoustical engineers with this data to work on, proceeded to create an instrument that filled every re-

quirement **Better Than Any Banjo Had Ever Done Before.**

They perfected a super-banjo with a tone that rings like a bell, big, snappy, brilliant, and of a quality that makes itself heard clearly through other orchestra music. At the same time it develops a volume, huge, swelling, sustained and far-carrying. **Every Bit of Tone that Leaves the Instrument Can be Heard in the Farthest Corner of the Hall.**

In appearance these new banjos are genuine works of art, made of the finest selected mahogany and walnut, skillfully blended together and inlaid with delicate colored wood design. Metal parts are elaborately engraved and embossed, and richly plated.

This is the new **Washburn Professional Banjo—King of Them All!**



Dansant Model

No. 5177 Mahogany finish maple all over; 10 $\frac{3}{4}$ -inch head; patented tone amplifier; large convex extension resonator, decorated with beautiful colored wood inlaying, fine three-piece neck. All metal parts heavily nickel-plated. Fine velvet lined case included \$90.00

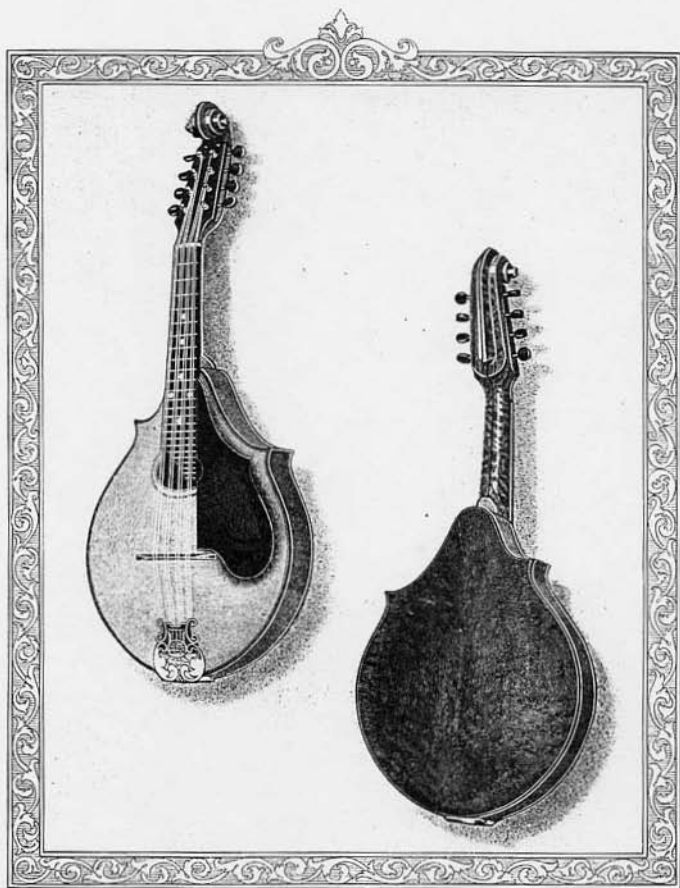
No. 5152 Plectrum style 90.00

No. 5102 Regulation or 5 string model 90.00



Classic Model

No. 5179 Beautiful bird's-eye maple all over; 10 $\frac{3}{4}$ -inch head; patented tone amplifier; large overlapping convex resonator, inlaid with colorful marquetry design. Improved narrow type neck, three-piece construction; metal parts heavily nickel-plated. Handsome silk plush lined case included \$110.00



The
WASHBURN "DELUXE"
Mandolin

WASHBURN MANDOLIN

Features

Tops and Backs Carved from Solid Wood

In the WASHBURN Mandolins are embodied not merely an open top and back but the violin model with the straight span preceding the arch. It is this tone-flexibility-giving modeling inside the edge of both top and back, that gives the violin its marvelous strength and vibrating power, and in the WASHBURN Mandolin this feature is duplicated precisely.



Figure 1

The pressing of tops and backs of stringed instruments into shape has no place in the manufacture of WASHBURNS: Moisture and change of temperature soon flatten the wood so treated, or warp it. WASHBURN tops and backs are hand carved out of the choicest old seasoned spruce and maple, graduated to perfect proportions, artistically lined and blocked with the same care as would be given to a fine violin. This is an exclusive WASHBURN feature. Note Figure 1. The small square is an actual photograph of the unfinished wood during the carving process. Notice the cleanness of the job—carved with precision; as fine as the work on a rare old violin.



Figure 2

Now look at the cut section of the finished mandolin. Figure 2. Observe the graceful curve of the top and back. And it is carved from solid wood—not pressed! Examine closely the white edge of the top piece where the saw cut through. See the perfect graduation in the thickness of the wood. From $\frac{1}{8}$ of an inch to $\frac{1}{16}$ of an inch. Do you appreciate the significance of that work? It means that the deep, heavy tones are caught, strengthened and mellowed by the thick portion of the arch and that the high notes are sweetened and enriched by the responsive vibrations of the tapered portion of the carved top and back.

The WASHBURN "De Luxe" Mandolin

As a jewel, cunningly mounted, gains fresh beauty and evokes greater appeal, so the WASHBURN "De Luxe."

Specifications

Body—Top carved from $\frac{3}{4}$ -inch fine grain quarter sawed spruce, natural color, graduated in thickness; golden brown curly maple sides; carved golden brown figured maple back; top and back edges of body inlaid with white and black fiberoil; oval soundhole bound with white and black fiberoil. Highly polished.

Neck—Thirteen-inch scale; polished mahogany neck reinforced with vulcanized fibre; artistic hand carved scroll head; ebony extension fingerboard bound with black celluloid; 6 pearl position dots; 24 nickel silver

The Fibre Reinforced Neck

Full length view of neck

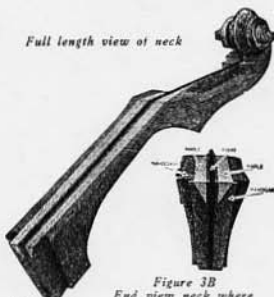


Figure 3A
End view neck where joined to body

In Figures 3A and 3B, note carefully the cut section of the neck piece. A thick strip of vulcanized fibre forms a rigid backbone through the center of the neck to prevent warping or twisting. Two wedge shaped strips of maple run full length parallel to the fibre to reinforce the solid mahogany outerstrips. The full length view of the neck shows the artistic hand carved scroll head that gracefully terminates the neck piece. From a standpoint of beauty or dependability this neck is unexcelled.

Compensating Tailpiece

Another exclusive feature is the patented compensating tailpiece. Figure 4. This so divides the string length that a perfect octave is produced back of the bridge, one octave above the harmonic produced at the 12th fret of the fingerboard.



Figure 4

frets; ebony bridge and polished bone fingerboard nut.

Trimmings—Specially made and improved patent heads covered with hard black rubber head plate; black celluloid buttons; patent vulcanized fibre guard plate; patent tailpiece with artistic nickel silver cover.

Case—Black seal grain Keratol covered 3-ply wood body; side opening; silk plush lined; nickel-plated brass trimmings, lock and clasps; steel valve; two compartments for accessories; leather handle.

No. 5283 Complete with case. \$185.00

The WASHBURN "ARISTOCRAT" Mandolin



Though there is only one standard of WASHBURN quality, tastes vary. This style has been designed for the artist who looks to his mandolin primarily for tone and durability. Not that he is unresponsive to physical beauty for this style, which is very popular with both the professional and amateur musician, presents a design of grace and exquisite finish, but with less ornate treatment than the WASHBURN "De Luxe."

Specifications

Body—Top carved from $\frac{3}{4}$ -inch fine grain spruce, natural color; graduated in thickness; golden brown curly maple sides; carved golden brown figured maple back; top edge of body inlaid with white and black fiberoid; back edge with ivory celluloid; oval sound hole bound with black and white fiberoid. Hand rubbed satin finish.

Neck—Thirteen-inch scale; mahogany neck reinforced with vulcanized fibre; ebony head piece; ebony extension fingerboard bound with black celluloid; 6 pearl position dots; 24 nickel silver frets; ebony bridge and polished bone fingerboard nut.

Trimmings—WASHBURN patent heads with black celluloid buttons; patent vulcanized fibre guard plate; patent tailpiece with artistic nickel silver cover.

Case—Black seal grain Keratol covered three-ply wood body; side opening; silk plush lined; nickel-plated brass trimmings, lock and clasps; steel valence; two compartments for accessories; leather handle.

No. 5282 Complete with case.....\$100.00

For "WASHBURN DE LUXE" Professional Mandolin, See Next Page

WASHBURN MANDOLINS



"Inspiration" Model

Now even the beginner need not play on an inferior instrument. The WASHBURN "Inspiration" Model is made by the same workmen and under the same rigorous supervision as the other styles. It has been produced in a successful endeavor to give the musician a fine mandolin at small cost. It has a tone of a very fine musical quality.

Specifications

Body—Fine spruce top, natural color; selected mahogany back and sides; top edge of body inlaid with black and white purfling; top and back edge bound with black celluloid; soundhole encircled with white and black celluloid.

Neck—Thirteen-inch scale, polished mahogany neck; ebonized fingerboard with 4 pearl position dots and 21 nickel silver frets; ebony bridge and bone fingerboard nut; inlaid tortoise shell celluloid guard plate.

Trimmings—Nickel-plated brass patent heads; nickel-plated brass tailpiece with slide cover.

No. 5280 Each \$25.00



"Classic" Model

Many an artist whose heart is set on the best mandolin obtainable must, for a while at least, content himself with an inexpensive instrument. In doing so his choice is one that is made considerably. This is why this WASHBURN is so highly received by him. It gives him the best design and workmanship obtainable and a tone of great richness and power.

Specifications

Body—Fine grained spruce top, natural color; figured rosewood back and sides; top and back edges of body inlaid with black and white celluloid; oval soundhole bound with white and black celluloid.

Neck—Thirteen-inch scale; polished mahogany neck and ebonized head plate; ebonized fingerboard bound with white celluloid; 5 pearl position dots; 21 nickel silver frets; ebony bridge and polished bone fingerboard nut; inlaid tortoise shell celluloid guard plate.

Trimmings—Nickel-plated patent heads; nickel-plated brass tailpiece with slide. Finest quality strings.

No. 5281 Each \$40.00

Cases

Black seal grain Keratol covered 3-ply wood body; side opening; steel valance; nickel-plated brass trimmings, lock and clasps; leather handle; compartment for accessories.

No. 6212 Flannel lined. Each \$10.80

No. 6214 Velvet lined. Each 12.60

No. 6216 Silk plush lined. Each 17.50

"WASHBURN'S" Are the Choice of the Professional

WASHBURN Ukuleles

Professional Concert Size

We present here two new models in Washburn Ukuleles. Instruments that possess the last word in tone quality because they are scientifically made and choice seasoned woods are used throughout. These instruments have a resonant, sweet, far-reaching tone that will delight any hearer. Artistic workmanship is evident throughout. The Washburn name on these instruments is your guarantee.



No. 5319

Super-DeLuxe Model

WASHBURN Ukulele

Master Craftsmanship
Throughout

America's Most
Beautiful Ukulele

Superfine Tone
Quality

Made of Genuine
Koa-wood



No. 5320

Concert size. Body of specially selected Koa-wood in beautiful satin finish. Top and back edges and center of back have cut block wood inlaying or purfling, giving the instrument a very neat appearance. Sound hole encircled with inlaid Abalone Pearl; sound hole edges bound with white ivory; new type end extension ebony bridge with 4 white bone pins and fret; genuine ebony fingerboard; 6 round pearl position marks; genuine mahogany 3-piece neck with strip of black fiberoid through center which not only gives the instrument a neat appearance but also eliminates any possible chance of warping; equipped with patent pegs and strung with best quality gut strings. An instrument possessing exquisite tone quality and artistic workmanship throughout. No. 5319 Price, each \$32.50

Concert size. Body of very fine and seasoned selected genuine Koa-wood, beautiful satin finish; top and back edges, center of back, and sound hole inlaid with beautiful Oriental Pearl; top and back edges are bound with white ivory; sound hole edges bound with white ivory; new model end extension ebony bridge with 4 white bone pins and bone fret; genuine ebony fingerboard with 5 pearl inlaid designs; fingerboard edges bound with white ivory binding; genuine mahogany 3-piece neck, beautifully shaped and finished; equipped with white ivory patent pegs of our own exclusive design; heel of neck capped with ebony and white ivory. An instrument possessing the last word in appearance and tone quality. No. 5320 Price, each \$85.00

Shrine Model

This is a professional instrument of the highest order, unique in shape, convenient to handle, and, above all, possessing a tone quality sweeter, more resonant and far-carrying than any ukulele you have ever heard. You will be amazed at the tone quality of this instrument. Scientifically built in every respect, and pronounced by discriminating players everywhere as in a class by itself.

Description

The body is made of extra fine genuine mahogany in beautiful satin finish; width of lower bout, 9 inches; length of entire instrument, 21½ inches. Top, back and sound hole edges bound with green celluloid, giving a very pleasing appearance; new model end extension bridge which allows freest possible vibration; genuine ebony fingerboard with 17 German silver frets and 4 round green celluloid position marks; genuine mahogany neck, beautifully modeled and finished; rosewood veneered headpiece with inlaid green celluloid design; equipped with special model patent pegs of our own exclusive design; strung with finest quality gut strings. This instrument absolutely possesses the last word in tone quality. Highly recommended for solo work.

No. 5330 Made of mahogany. Price, each \$20.00

No. 5331 Same as No. 5330, except made of specially selected birch, mahogany finish. Each 15.00

Shrine Model Ukulele Cases

Made of 3-ply veneer covered with walrus grain waterproof black Keratol; steel valance; side opening; velvet lined; nickel plated brass lock, clasps and protectors; leather handle; durable workmanship throughout.

No. 6412 Price, each \$10.50

No. 6410 Black walrus grain Keratol; fiberboard body; side opening; flannel lined. Each 6.00



WASHBURN Ukulele

Professional Concert Size

Great advances in ukulele construction are evident in this remarkable group of WASHBURNS. Few instruments of their kind today possess such beauty of tone, gracefulness of design and remarkable quality of workmanship.

There is in the WASHBURN tone a sweetness, power, and a far-carrying quality that delights the player. There is an instant response to the slightest touch on the string. Under prolonged playing, the tone retains its vibrant fullness and vigor. The design of the instrument is such that playing is easy.



Washburn
Junior
Model

No. 5314

Washburn Junior

No. 5314 A new addition to the famous line of "WASHBURN" instruments. Slightly smaller in size than the full Concert model but has all the ear marks of the professional Ukulele. The workmanship is exquisite and the tone marvelous. Entire instrument made of carefully selected mahogany and dull rubbed finish. Genuine rosewood fingerboard with inlaid position dots. Special non-slip patent pegs. Each.....\$10.00



Washburn
Inspiration
Model

No. 5315

Inspiration Model

No. 5315 The WASHBURN "Inspiration Model" Ukulele is made of figured mahogany, hand rubbed satin finish all over; alternating black and white purfling inlaid around sound hole; sound hole edges bound with celluloid; mahogany bridge with ebony fret; genuine rosewood fingerboard with 12 accurately placed German silver frets, and 3 pearl position dots; equipped with Lyontite patent pegs with black buttons. Each...\$12.00

Tone Tells the Story—

that is why Washburn Ukuleles are the choice of discriminating artists the world over.



Washburn
Collegian
Model

No. 5316

Collegian Model

No. 5316 The WASHBURN "Collegian Model" Ukulele is made of selected figured genuine mahogany, hand rubbed satin finish all over; new type end extension mahogany bridge; beautifully finished genuine rosewood extension fingerboard with 17 accurately placed German silver frets and 4 pearl position dots; equipped with special model patent pegs. Each....\$15.00



Washburn
Solo
Model

No. 5317

Solo Model

No. 5317 The WASHBURN "Solo Model" Ukulele is made of beautifully figured genuine mahogany, hand rubbed satin finish all over; top and back edges bound with ivory; new type end extension mahogany bridge; polished bone bridge pins and fret; beautifully finished genuine rosewood extension fingerboard; special model patent pegs; ivory design inlaid in head; gold leaf decalcomania around lower bout. Strung with finest quality gut strings. Each.....\$20.00



Washburn
Superb
Model

No. 5318

Superb Model

No. 5318 The WASHBURN "Superb Model" Ukulele is made of beautifully figured genuine Koa-wood, hand rubbed satin finish all over; top and back edges bound with ivory; new type end extension Koa-wood bridge; polished bone bridge pins and fret; beautifully finished genuine rosewood extension fingerboard; special model patent pegs; ivory design inlaid in head; attractive gold decalcomania maple leaf design around lower bout. Dainty appearance. Beautiful tone. Each.....\$25.00

WASHBURN Tenor Ukuleles

Professional Grand Concert Size

New models in Washburn Tenor Ukuleles. These new instruments are rare beauties. They possess a deep, rich, resonant, far-reaching tone that captivates everyone. Scientifically built throughout. Choice seasoned woods, artistically finished. Each instrument is thoroughly tested and bears the approval of an expert before leaving our factory.

DeLuxe Model WASHBURN Tenor Ukulele



No. 5355
DeLuxe
Model

No. 5355 Body is made of specially selected Koa-wood in beautiful satin finish. Top and back edges and center of back have cut black wood inlaying or purfling. Sound hole edges bound with white ivory; ebony bridge; genuine ebony fingerboard; genuine mahogany 3-piece neck with strip of black fiberoid through center which not only gives the instrument a neat appearance, but also eliminates any possible chance of warping; ivory patent pegs.

Price, each\$40.00

Super-DeLuxe Model WASHBURN Tenor Ukulele



No. 5360
Super
DeLuxe
Model

No. 5360 Body of very fine seasoned selected genuine Koa-wood, beautiful satin finish; top and back edges, center of back and sound hole encircled with inlaid beautiful Oriental Pearl; top and back edges are bound with white ivory; sound hole edges bound with white ivory; extension ebony bridge; genuine ebony fingerboard with 5 inlaid pearl designs; fingerboard edges bound with white ivory; genuine mahogany 3-piece neck, beautifully shaped and finished; ivory patent pegs.

Price, each\$60.00

Grand Concert Size Fancy Pearl Inlaid

*Superfine Tone
Quality*
*Made of Genuine
Koa-Wood*
*Master Craftsmanship
Throughout*
*America's
Most Beautiful
Tenor Ukuleles*



No. 5350
Washburn Tenor

Washburn Tenor Ukulele

Enlarged Model—Length 24½ inches

The WASHBURN Tenor Ukulele has a beautifully figured genuine mahogany back, sides, top and neck, hand rubbed satin finish all over; top and back edges bound with ivory; new type end extension mahogany bridge which allows freest possible vibration and cannot tip or pull off; polished bone bridge pins and fret; beautifully finished genuine rosewood extension fingerboard with 17 very accurately placed German silver frets and 4 pearl position dots; polished bone fingerboard nut; beautifully modeled head equipped with special model patent pegs; ivory design inlaid in head; patent pegs have nickel-plated brass posts mounted with ivory buttons. Gold leaf decalcomania around lower bout. Strung with finest quality gut strings.

No. 5350 Each\$30.00

Tonk Bros. Co.

(Incorporated)

623 South Wabash Avenue

Brunswick Building

Chicago, Ill.



World's Largest Exclusive Wholesalers of Musical Merchandise

Our 37th Year

CATALOG NUMBER FORTY-SEVEN