

Parlin



*Fretted
Instruments*



SINCE 1833

Martin

GUITARS
MANDOLINS
UKULELES

RETAIL CATALOGUE

SUBJECT TO CHANGE WITHOUT NOTICE

Established 1833

C. F. MARTIN & CO., INC.

Nazareth, Pa., U. S. A.

PRINTED IN U. S. A.

JULY, 1941

FOR YOUR CONVENIENCE

Guitars, flat	pages 3-10
Guitars, gut-string	pages 11-12
Guitars, Hawaiian	page 13
Guitars, tenor	page 14
Guitars, arched	pages 15-19
Mandolins	pages 21-24
Ukuleles	pages 25-27
Tiples	page 28
Strings	pages 29-30
Cases	page 31
Picks	page 31

FOREWORD—

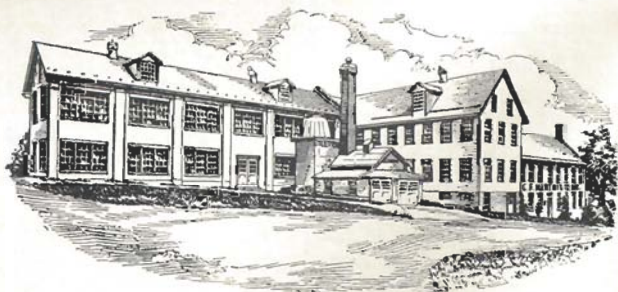
MORE than a hundred years ago C. F. Martin, Sr. established the principles of construction and the ideals of workmanship that govern the manufacture of Martin guitars and kindred instruments today. His descendants of the third and fourth generations, mindful of changing times and new conditions, have added tested improvements in design and construction to meet the needs of modern players; but the old standards of excellent materials and careful workmanship are still the basis of Martin quality.

Warranty

All Martin instruments are warranted, without time limit, against defective material or imperfect workmanship.

C. F. Martin & Co., Inc.

Established 1833



0-15

Orchestra Model

FINE mahogany body and top; black and white purfling around sound hole. Mahogany neck reinforced with steel T-bar joined to the body at the 14th fret with a deep hand-fitted dovetail joint. Rosewood fingerboard, well-rounded for easy fingering, wide nickel-silver frets, white position dots. Clear semi-gloss lacquer finish, natural color. Nickel-plated tuning machines with white buttons.

PRICE

No. 0-15 Concert Size \$25.00

All Martin instruments show the same fine workmanship, without regard to price, and carry the same unlimited guaranty.

(((3)))



00-17

Orchestra Model

SELECTED mahogany body, top, and neck, with rosewood fingerboard and bridge. Steel T-bar makes the slim neck very rigid under the oval fingerboard with wide frets and white dots. Hand rubbed and polished lacquer finish, dark mahogany color. Nickel-plated tuning machines, single-unit style, white buttons.

PRICES

No. 0-17 Concert	\$30.00
No. 00-17 Grand Concert	35.00

The mahogany used in Martin instruments comes from tropical America. In three-inch lumber for necks and in quarter-sawn veneer for bodies it is air-dried and carefully matched in color and grain; that means fine tone and appearance.

(((4)))



000-18

Orchestra Model

MAHOGANY body, finished dark, with natural color spruce top. Edges bound with dark fiberloid; sound hole and top border inlaid with black and white lines. Mahogany neck, rosewood fingerboard and bridge. Pearl position dots and white side dots. Nickel-plated tuning machines, single unit all-metal type. Hand-polished lacquer finish.

This style will be furnished with shaded dark top instead of natural finish on request at no extra charge.

PRICES

No. 0-18 Concert	\$40.00
No. 00-18 Grand Concert	50.00
No. 000-18 Auditorium	60.00

(((5)))



000-28



000-45

Orchestra Model Orchestra Model

ROSEWOOD body bound with ivoroid, bordered and inlaid with black and white marqueterie. Fine vertical grain spruce top, finished natural color. Ebony fingerboard, well rounded, with hard nickel-silver frets wide and low. Tortoise-shell plastic pick-guard. Hand-polished lacquer finish. *Shaded dark top on request at no extra charge.*

PRICES

No. 000-28 Auditorium \$100.00

The same model with dark bindings, plainer inlay, and black bridge pins:

No. 000-21 Auditorium \$85.00

(((6)))

A BEAUTIFUL guitar both in tone and in appearance. Selected rosewood back and sides, spruce top, all borders neatly inlaid with mother-of-pearl. Edges of body, fingerboard and head bound with ivoroid. Fancy pearl position marks; pearl inlaid bridge pins. Gold-plated tuning machines, single unit all-metal style. Hand-polished lacquer finish.

PRICES

No. 000-45 Auditorium \$200.00

The same model with less pearl inlay; nickel-plated tuning machines:

No. 000-42 Auditorium \$150.00

(((7)))



D-18

Dreadnaught Orchestra Model

MAHOGANY body, finished dark, with natural color spruce top. Edges bound with tortoiseshell plastic; sound hole and top border inlaid with black and white lines. Mahogany neck, reinforced with steel bar, ebony fingerboard and bridge. Pearl position dots and white side dots. Nickel-plated tuning machines, single unit all-metal type. Hand-polished lacquer finish.

This style will be furnished with shaded dark top instead of natural finish on request at no extra charge.

PRICE
No. D-18 Dreadnaught\$75.00

(((8)))



D-28

Dreadnaught Orchestra Model

THIS is the famous "Dreadnaught" bass guitar originated by Martin. The extra wide and deep body produces a tone of great power and smoothness, especially fine for broadcasting or recording.

Rosewood body, spruce top, ivoroid edges, reinforced mahogany neck, ebony fingerboard and bridge, wide frets, polished lacquer finish. *Dark top on request.*

PRICE
No. D-28 Dreadnaught\$115.00

(((9)))



D-45

Dreadnaught Orchestra Model

THE selected rosewood and spruce used in this guitar, beautifully inlaid on all borders with mother-of-pearl and bound with ivoroid, give it the handsome appearance and the superior tone that professional players need. Easy fingering is assured by the thin hand-shaped neck and the oval ebony fingerboard. Gold-plated tuning machines; pearl position marks and bridge-pin dots.

PRICE

No. D-45 Dreadnaught \$225.00

The fine spruce top, with its unique graduated bracing, gives Martin Tone the purity and power that players admire.

(((10)))



00-18G

Classic Model

GUT and silk strings, classical style, very thin wood and light bracing, wide neck, flat fingerboard and loop bridge give this model definite Spanish character in tone and in appearance. *Made for gut and silk strings only; not suitable for steel strings.*

STYLE 18G. Mahogany body and neck, spruce top, ebony fingerboard with white side-dots, wide frets, hand-polished lacquer finish.

PRICE

No. 00-18G Grand Concert \$50.00

STYLE 28G. The same model in rosewood, with ivoroid bindings and more inlay; finer tone for solo playing.

PRICE

No. 00-28G Grand Concert \$90.00

(((11)))



00-42

Standard Model

THIS time-tested model has the standard twelve-fret neck, wide oval fingerboard, and light body construction for finger playing with steel or gut strings.

No. 0-21 Concert size rosewood body, dark bindings and inlay \$60.00

No. 00-21 Grand Concert 70.00

No. 00-42 Grand Concert size rosewood body, ivoroid bindings, top inlaid with pearl \$135.00

JUNIOR SIZE GUITARS

No. 5-17 All-mahogany body, 11¼ inches wide; narrow rosewood fingerboard, scale 21⅞ inches. Natural finish, semi-gloss \$25.00

No. 5-18 Like 5-17, but has spruce top and ebony fingerboard. Dark mahogany, polished \$40.00

Junior, or three-quarter, size is fine for children; easy to hold and to play.



00-18H

Hawaiian Model

THIS model is made for Hawaiian playing only, with flat fingerboard, flush frets, level bridge and nut.

No. 00-40H Grand Concert size rosewood body, spruce top inlaid with pearl, ivoroid bindings. \$100.00

No. 00-18H Grand Concert size mahogany body, spruce top inlaid with white lines, dark finish. \$50.00

No. 0-17H Concert size all-mahogany body, natural finish \$30.00

Hawaiian guitarists like the rich tone-quality that distinguishes a Martin.



0-17T

Tenor Model

THESE tenor guitars have the regular twenty-three-inch scale for A-D-G-C tuning; otherwise they are like the corresponding six-string models. All have the full-size guitar bodies except No. 5-17T which is 11¼ inches wide. In the Arched Models the top is carved and the bridge is adjustable.

FLAT MODEL

PRICES

No. 5-17T Junior Size	\$25.00
No. 0-17T Concert	30.00
No. 0-18T Concert	40.00

ARCHED MODEL

PRICE

No. R-18T Grand Concert	\$55.00
-------------------------------	---------

Built like a guitar but tuned like a tenor banjo, the tenor guitar has the bright tone and light action that makes playing a pleasure.

(((14)))



R-18

Arched Model

CARVED spruce top with graduated braces, mahogany back and sides edged with dark fiberloid, inlaid with black and white lines. Mahogany neck, reinforced with steel T-bar, rosewood fingerboard with wide frets. Adjustable rosewood bridge, elevated pick-guard, nickel-plated trimmings. Polished lacquer finish, dark mahogany color, top shaded golden brown. Body size 14 $\frac{5}{8}$ by 18 $\frac{7}{8}$ inches.

PRICE

No. R-18 Grand Concert	\$55.00
------------------------------	---------

The same model with arched mahogany top, less inlay and plainer trimmings:

No. R-17 Grand Concert	\$40.00
------------------------------	---------

(((15)))



F-1



C-2

Arched Model Arched Model

MAHOGANY body, carved spruce top, bound with ivoroid, fitted with adjustable ebony bridge, elevated pick-guard and nickel-plated engraved tailpiece. Mahogany neck, reinforced with steel T-bar, joined to the body at the fourteenth fret; ebony fingerboard inlaid with pearl position dots, wide nickel-silver frets. Hand-polished lacquer finish, mahogany parts dark, spruce top shaded golden brown color. Body 16 by 20 inches.

PRICES

No. F-1 Grand Auditorium\$90.00

The same style but smaller size, body 15 by 19 $\frac{3}{8}$ inches; rosewood fingerboard.

No. C-1 Auditorium\$75.00

(((16)))

ROSEWOOD body, auditorium size, with carved spruce top, bound and inlaid with ivoroid and pearl. Mahogany neck reinforced with steel T-bar, ebony fingerboard bound with ivoroid; hard alloy frets, very wide and low. Adjustable ebony bridge, elevated pick-guard bound with ivoroid, nickel-plated trimmings. Hand-polished lacquer finish, top shaded, back and sides natural rosewood brown.

PRICES

No. C-2 Auditorium\$125.00

The same style but larger size, body 16 by 20 inches:

No. F-2 Grand Auditorium\$135.00

(((17)))



F-7

Arched Model

SPRUCE top carved and graduated like a violin, arched rosewood back with graduated spruce braces. Mahogany neck reinforced with steel T-bar, ebony fingerboard bound with ivoroid, pearl inlaid head, six pearloid position marks. Adjustable ebony bridge, elevated pick-guard bound with ivoroid. Hand-polished lacquer finish, top shaded golden brown, chromium-plated trimmings.

Grand Auditorium size, body 16 by 20 inches; right in tone and in appearance for professional use.

PRICE

No. F-7 Grand Auditorium \$175.00

Rosewood is selected for the finest Martin guitars because of its resonant tone quality. The wood grows in Brazil, is very hard, and takes a beautiful finish, showing the matched grain and rich dark color.

(((18)))



F-9

Arched Model

THIS is the Guitar De Luxe. To brilliance in tone is added the beauty of rich pearl and ivoroid inlay, gold-plated trimmings, lustrous lacquer finish—a masterpiece of design and workmanship.

Grand Auditorium size, rosewood back and sides, carved spruce top, mahogany neck, reinforced with steel bar, ebony fingerboard inlaid with pearl marks. All edges bound with ivoroid and bordered with fine black and white lines. Authentic cello F-scrolls, adjustable ebony bridge, ivory nut. Top shaded golden brown to match the body and neck, all hand-polished.

PRICE

No. F-9 Grand Auditorium \$250.00

(((19)))

Guitar Sizes

MARTIN guitars are made in several sizes to meet the needs of the players. In addition to the stock sizes listed for each style, in the Orchestra and Standard Models, other sizes can be made on special order; prices will be quoted on request.

The principal outside dimensions of the stock sizes are, in inches:

ARCHED MODEL

	SIZE R	C	F
Total Length	38 $\frac{3}{8}$	39 $\frac{1}{8}$	39 $\frac{7}{8}$
Body Length	18 $\frac{7}{8}$	19 $\frac{3}{8}$	20
Body Width	14 $\frac{5}{16}$	15	16
Body Depth	4 $\frac{1}{4}$	4 $\frac{3}{16}$	4 $\frac{1}{2}$

ORCHESTRA MODEL

	SIZE No. 0	00	000	D
Total Length	38 $\frac{3}{8}$	38 $\frac{3}{8}$	39 $\frac{3}{8}$	40 $\frac{1}{4}$
Body Length	18 $\frac{3}{8}$	18 $\frac{7}{8}$	19 $\frac{3}{8}$	20
Body Width	15 $\frac{1}{2}$	14 $\frac{5}{16}$	15	15 $\frac{3}{8}$
Body Depth	4 $\frac{1}{4}$	4 $\frac{1}{8}$	4 $\frac{1}{8}$	4 $\frac{7}{8}$

STANDARD MODEL

	SIZE No. 5	0	00
Total Length	35	37 $\frac{3}{4}$	38 $\frac{1}{4}$
Body Length	15 $\frac{7}{8}$	19 $\frac{1}{8}$	19 $\frac{1}{2}$
Body Width	11 $\frac{1}{4}$	13 $\frac{1}{2}$	14 $\frac{1}{4}$
Body Depth	3 $\frac{7}{8}$	4 $\frac{1}{4}$	4 $\frac{1}{8}$

TENOR MODEL

	SIZE No. 5	0	R	C
Total Length	34	35	36 $\frac{3}{8}$	37
Body Length	15 $\frac{7}{8}$	17 $\frac{1}{8}$	18 $\frac{7}{8}$	19 $\frac{3}{8}$
Body Width	11 $\frac{1}{4}$	13 $\frac{1}{2}$	14 $\frac{5}{8}$	15
Body Depth	3 $\frac{7}{8}$	4 $\frac{1}{8}$	4 $\frac{1}{4}$	4 $\frac{3}{8}$

GUITAR NECKS

All Martin guitars have solid mahogany necks hand-shaped and fitted to the body in a deep dove-tail joint. Orchestra Model and Arched Model guitars have a steel T-bar reinforcement in the neck under the oval ebony or rosewood fingerboard. All necks are guaranteed not to warp.

(((20)))



STYLE A

Mandolin

MAHOGANY body and neck, spruce top, ebony fingerboard and bridge. Rosewood head veneer, small white dots on face and edge of fingerboard. Body bound with fiberloid, black and white border and sound hole ring. Nickel-plated tailpiece and machines. Dark finish, top shaded. *Natural color top on request.*

PRICE

Style A Mandolin\$25.00

STYLE B. Rosewood body with spruce top, natural color; same model as Style A, with more inlay.

Style B Mandolin\$40.00

(((21)))



STYLE 2-15

Mandolin

IN THIS new model the neck joins the body at the 12th fret, scale is 13 $\frac{3}{4}$ inches long, maple back and spruce top are carved from air-dried wood. F-scrolls instead of sound hole, ebony fingerboard and bridge. Body bound with ivoroid, trimmings nickel-plated. Polished lacquer finish, golden brown color.

	PRICE	
No. 2-15		\$50.00

STYLE 15

Sound hole model, 13-inch scale, neck joined to body at the 10th fret, top natural spruce color; otherwise like No. 2-15.

	PRICE	
No. 15		\$45.00

(((22)))



STYLE 2-20

Mandolin

NEW features in this mandolin are the 13 $\frac{3}{4}$ -inch scale, long neck joined to the body at the 12th fret, F-scrolls, and dark finish. Curly maple back and sides, spruce top, ebony fingerboard and bridge; top and back carved and graduated like a violin.

	PRICE	
No. 2-20		\$85.00

The maple used in Martin mandolins is white and hard, quarter-sawn to bring out the beautiful curly figure. In the back this figure is matched, as in a violin, and the sides are selected for similar figure.

(((23)))



STYLE 2-30

Mandolin

THE beauty of this model is equalled by its smooth, clear tone, due to the use of air-dried curly maple and spruce, quarter-sawn and matched to show the fine grain and fiddle-back figure. Built like a violin, with carved top and back, it is finely bound and inlaid on all edges, fitted with chromium-plated trimmings and finished in a rich dark color with hand-polished lacquer. Scale is 15¾ inches; neck joined to the body at the 12th fret to make fingering easy.

	PRICE	
No. 2-30		\$135.00

(((24)))

Ukulele

STYLE 0

MAHOGANY body and neck, finished natural color. Black and white ring inlaid around sound hole. Rosewood fingerboard, three white position dots. Ebony nut and bridge saddle. Nickel-plated pegs, black buttons.



	PRICE	
No. 0		\$10.00

STYLE 1. Dark mahogany body and neck, top edge bound and bordered with black and white lines. Rosewood fingerboard, four white position dots. Nickel-plated pegs.

No. 1	\$12.50
-------------	---------

STYLE 1K. Same as Style 1 except Hawaiian koawood body finished natural color.

No. 1K	\$12.50
--------------	---------

STYLE 2. Mahogany body and neck, finished dark color. Edges bound with ivoroid. Top bordered and inlaid with black and white lines. Rosewood fingerboard, ebony nut and bridge saddle. Nickel-plated patent pegs with ivoroid buttons.

No. 2	\$15.00
-------------	---------

CONCERT UKULELE

STYLE 1C. Larger body and longer scale, producing more volume of tone; otherwise like Style 1 ukulele above.

No. 1C	\$15.00
--------------	---------

(((25)))



Ukulele

STYLE 5

FIGURED mahogany body and top, mahogany neck, ebony fingerboard bound with ivory plastic, figured mahogany head veneer inlaid with pearl scroll, ivory saddle and nut. Fine patent pegs. Pearl inlay around sound hole and along front and back edges of body. Elaborate pearl position marks, black side dots. Polished finish. An instrument combining tone and handsome appearance for professional use.

PRICE

No. 5\$50.00



STYLE 1T

Ukulele Tenor Ukulele

STYLE 3

MAHOGANY body and neck, finished dark color. Body bound and neatly inlaid with ivory-celluloid. Ebony fingerboard, seventeen frets, pearl position marks, white side dots, ivory nut and bridge saddle, nickel-plated pegs with ivoroid buttons.

PRICE

No. 3\$25.00

In the construction of MARTIN UKULELES the principles on which MARTIN GUITARS have been made for more than a century are applied. Natural air-drying, graduated bracing, keeping the instrument as light in weight as durability will permit, make the tone that is famous wherever ukuleles are played.

(((26)))

MAHOGANY body and neck, rosewood fingerboard and bridge. White position marks and side dots, ebony nut, ivory bridge saddle. Body bound with rosewood, bordered and inlaid with black and white wood. Lacquer finish, dark mahogany color. Patent pegs, nickel-plated, with black buttons.

The body is $8\frac{7}{8}$ inches wide at the bridge, with a string length of 17 inches. With heavy gut strings, it can be tuned like a guitar, a fifth lower than a ukulele; with lighter strings, regular ukulele tuning can be used.

PRICE

No. 1T\$20.00

The tenor ukulele makes the rich guitar tone available to the ukulele player. It is a fine instrument for song accompaniment and novelty effects.

(((27)))



STYLE T-18

Tiple

MAHOGANY body and neck; rosewood head veneer, bridge and fingerboard. White position dots and side dots. Ring of white and black veneer inlaid around sound hole. Brass patent heads, with ivory-celluloid buttons. Lacquer finish, natural color.

Strung with ten strings, in three groups; tuned and played like a ukulele.

No. T-17 PRICE \$25.00

STYLE T-18

Mahogany, with spruce top; bound with rosewood.

No. T-18 PRICE \$35.00

STYLE T-28

Rosewood, with spruce top; bound with ivoroid.

No. T-28 PRICE \$60.00

(((28)))

Martin Strings

PACKED in glassine envelopes, each dozen or set wrapped in cellophane. The gross prices apply on half-gross quantities of plain steel strings and one-third gross of all other strings and sets.

SPANISH GUITAR, BRONZE

Wound on special hexagon steel wire. Bass strings polished. Heavy gauge.

No.	BALL ENDS	EACH	DOZEN	GROSS
111-E	Polished steel	\$0.10	\$1.00	\$10.00
112-B	Bronze wound20	2.00	20.00
112½-B	Polished steel10	1.00	10.00
113-G	Bronze wound20	2.20	22.00
114-D	Bronze wound25	2.50	25.00
115-A	Bronze wound30	3.00	30.00
116-E	Bronze wound35	3.50	35.00
117	Set of six (wound 2nd)	1.35	13.50	135.00
117½	Set of six (plain 2nd)	1.25	12.50	125.00

SPANISH GUITAR, MONEL

Wound on piano steel wire. Medium gauge.

No.	BALL ENDS	EACH	DOZEN	GROSS
101-E	Polished steel	\$0.10	\$1.00	\$10.00
102-B	Monel wound15	1.70	17.00
102½-B	Polished steel10	1.00	10.00
103-G	Monel wound15	1.70	17.00
104-D	Monel wound20	1.90	19.00
105-A	Monel wound25	2.40	24.00
106-E	Monel wound30	2.70	27.00
107	Set of six (wound 2nd)	1.05	10.50	105.00
107½	Set of six (plain 2nd)	1.00	10.00	100.00

SPANISH GUITAR, GUT

Violin gut treble, silk center bass strings.

No.	EACH	DOZEN
121-E	Trued gut, white	\$0.35 \$3.50
122-B	Trued gut, white45 4.70
123-G	Trued gut, white50 5.50
124-D	Silver wound on silk20 2.20
125-A	Silver wound on silk25 2.50
126-A	Silver wound on silk30 3.00
127	Set of six	2.00 21.00

(((29)))

HAWAIIAN GUITAR

Heavy gauge piano wire; bass strings wound with polished copper.

No.	BALL ENDS	EACH	DOZEN	GROSS
201-E	Polished steel	\$0.10	\$1.00	\$10.00
202-C#	Polished steel	.10	1.00	10.00
203-A	Polished steel	.10	1.00	10.00
204-E	Copper wound	.30	2.80	28.00
205-A	Copper wound	.35	3.50	35.00
206-E	Copper wound	.40	4.20	42.00
207	Set of six	1.30	13.00	130.00

TENOR GUITAR

Monel wound on piano steel wire.

No.	BALL ENDS	EACH	DOZEN	GROSS
301-A	Polished steel	\$0.10	\$1.00	\$10.00
302-D	Polished steel	.10	1.00	10.00
303-G	Monel wound	.20	2.00	20.00
304-C	Monel wound	.20	2.00	20.00
305	Set of four	.60	6.00	60.00

MANDOLIN

Bronze wound, polished.

No.	LOOP ENDS	EACH	DOZEN	GROSS
401-E	Polished steel	\$0.10	\$1.00	\$10.00
402-A	Polished steel	.10	1.00	10.00
403-D	Bronze wound	.20	2.00	20.00
404-G	Bronze wound	.25	2.50	25.00
405	Set of eight	1.25	12.50	125.00

UKULELE

Trued violin gut, accurately gauged.

No.		EACH	DOZEN
601-B	White gut	\$0.15	\$1.50
602-F#	White gut	.20	2.00
603-D	White gut	.25	2.50
604-A	White gut	.20	2.00
605	Set of four	.75	7.50

TIPLE

Three wound and seven plain steel.

No.		EACH	DOZEN
650	Set of ten	\$1.00	\$10.00

(((30)))

Cases

STYLE A—Fleece-lined fiber-board body, side opening, covered with brown shark grain keratol.

STYLE B—Protex fiber-board body with arched plywood lid, purple flannel lining; black ostrich grain keratol covering; nickel-plated trimmings.

STYLE C—Heavy plywood body; purple felt lining, padded; fine brass lock, chromium-plated; black keratol covering; leather strap handle.

STYLE D—Best plywood construction, heavily padded and lined with green plush. Fine black keratol covering, leather strap handle, chromium-plated brass lock and catches.

PRICES

	A	B	C	D
Guitar, Size 5	\$6.00	\$ 9.00	\$13.00	\$22.00
Guitar, Size 0	6.00	10.00	16.00	25.00
Guitar, Size 00	6.00	10.00	16.00	25.00
Guitar, Size 000		10.00	16.00	25.00
Guitar, Model R		10.00	16.00	
Guitar, Model C		10.00	16.00	25.00
Guitar, Model D		12.00	17.00	27.00
Guitar, Model F			17.00	27.00
Tiple		6.00	10.00	
Ukulele		4.00	9.00	12.00
Concert Ukulele		5.00		
Tenor Ukulele		5.00	10.00	
Mandolin, Flat		6.00	10.00	
Mandolin, Carved		6.00	12.00	18.00
Tenor Mandola		7.50	14.00	

Picks

SELECT quality, beveled edges, polished finish, medium size and stiffness, suitable for general use on guitar or mandolin; stamped "Martin."

PRICES

No.		Each	Dozen	Gross
No. 138	Tortoise Shell	\$0.30	\$3.00	\$30.00
No. 38	Celluloid	.10	1.00	10.00

(((31)))

HISTORICAL SKETCH

THE founder of the House of Martin, C. F. Martin, Sr., was born in Mark Neukirchen, Saxony, in 1796. He learned the trade of guitar making there and emigrated to New York, where, in 1833, the first Martin guitars were made.

In 1839 he moved his business and his family to Nazareth, Pa., but the guitars he made were still branded "C. F. Martin, New York." This was changed to "C. F. Martin & Co., New York," in 1867, when C. F. Martin, Jr., became a partner; and that brand was used until F. H. Martin, grandson of the founder, changed it in 1898 to "C. F. Martin & Co., Nazareth, Pa." Since 1839 all Martin guitars have been made at Nazareth under the direct supervision of the founder or his descendants.

Mandolins and ukuleles were added with the appearance of popular demand for them—mandolins in 1895 and ukuleles in 1915. These new instruments, designed and built on Martin guitar principles, brought new prestige and wider distribution; but the larger factory with its bigger staff is still owned and directed by F. H. Martin, who, with his son, C. F. Martin, 3rd, has full charge of the business.



The House of Martin

Since 1833

C. F. MARTIN, SR. 1796-1873
C. F. MARTIN, JR. 1825-1888
F. H. MARTIN, 1866-
C. F. MARTIN, 3rd, 1894-
H. K. MARTIN, 1895-1927

C. F. MARTIN & CO., Inc.

Established 1833—Incorporated 1921