

Marlin

STRING INSTRUMENTS



FOR THE IDENTIFICATION AND DATING
OF
VINTAGE GUITARS, MANDOLINS AND BANJOS
CATALOGS FROM THE COLLECTION OF GEORGE YOUNGBLOOD

These are scans of catalogs originally distributed to the public to describe the manufacturer's products available for sale at one point in time.

The intended use for these catalogs is historical research: vintage instrument identification and dating.

These catalogs are not offered here for sale or re-sale – They are only for the academic purpose of instrument identification, research and historical context. Please respect their use and do not reproduce, copy or distribute this information for any other purpose.

It is important to note that instrument catalogs are not always accurate in their descriptions of instrument specifications or the images used. While product improvements were constantly being made; catalogs often used older existing drawings, etchings or photographs. In some cases instruments were offered in catalogs that had been discontinued for years. For these reasons, catalogs can only be used as general guides for the dating and identification of vintage instruments.

If you are having trouble with some of the instruments details, we may be able to help. Feel free to contact us at:

ACOUSTICMUSIC.ORG:

<http://www.AcousticMusic.Org>

Martin.....

**GUITARS
MANDOLINS
UKULELES**

RETAIL CATALOGUE

**SUBJECT TO CHANGE
WITHOUT NOTICE**

Established 1833

C. F. MARTIN & CO., INC.
NAZARETH, PA. U. S. A.

PRINTED IN U. S. A.

JULY 1937

FOR YOUR CONVENIENCE.....

Guitars, arched	pages	3-7
Guitars, flat	pages	8-12
Guitars, tenor	page	13
Guitars, gut-string	pages	14-15
Guitars, Hawaiian	pages	16-17
Mandolins	pages	20-23
Mandolas	page	24
Mando-cello	page	24
Ukuleles	pages	25-27
Triples	page	28
Strings	pages	29-30
Picks, Cases	page	31

FOREWORD ~

MORE than a hundred years ago C. F. Martin, Sr., established the principles of construction and the ideals of workmanship that govern the manufacture of Martin guitars and kindred instruments today. His descendants of the third and fourth generations, mindful of changing times and new conditions, have added tested improvements in design and construction to meet the needs of modern players; but the old standards of excellent materials and careful workmanship are still the basis of Martin quality.

Warranty

All Martin instruments are warranted, without time limit, against defective material or imperfect workmanship.

C. F. MARTIN & CO., INC.

Established 1833



STYLE F-9

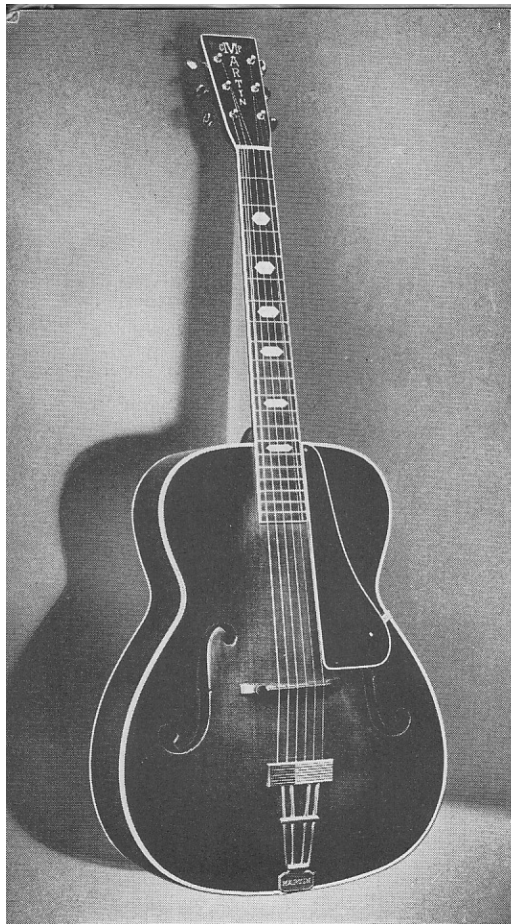
ARCHED MODEL

THIS is the Guitar De Luxe. To brilliance in tone is added the beauty of rich pearl and ivoroid inlay, engraved gold-plated trimmings, lustrous lacquer finish—a masterpiece of design and workmanship.

Grand Auditorium size, rosewood back and sides, carved spruce top, mahogany neck, reinforced with steel bar, ebony fingerboard inlaid with pearl marks. All edges bound with ivoroid and bordered with fine black and white lines. Authentic 'cello F-scrolls, adjustable ebony bridge, ivory nut. Top shaded golden brown color to match the body and neck, all hand polished.

PRICE

No. F-9 Grand Auditorium\$250.00



STYLE F-7

ARCHED MODEL

SPRUCE top carved and graduated like a violin, arched rosewood back with graduated spruce braces. Mahogany neck re-enforced with steel T-bar, ebony fingerboard bound with ivoroid, pearl inlaid head, six pearloid position marks. Adjustable ebony bridge, elevated pick-guard bound with ivoroid. Hand-polished lacquer finish, top shaded golden brown color, chromium-plated trimmings.

Grand Auditorium size, body 16 by 20 inches; right in tone and in appearance for professional use.

PRICE

No. F-7 Grand Auditorium.....\$175.00



STYLE C-2

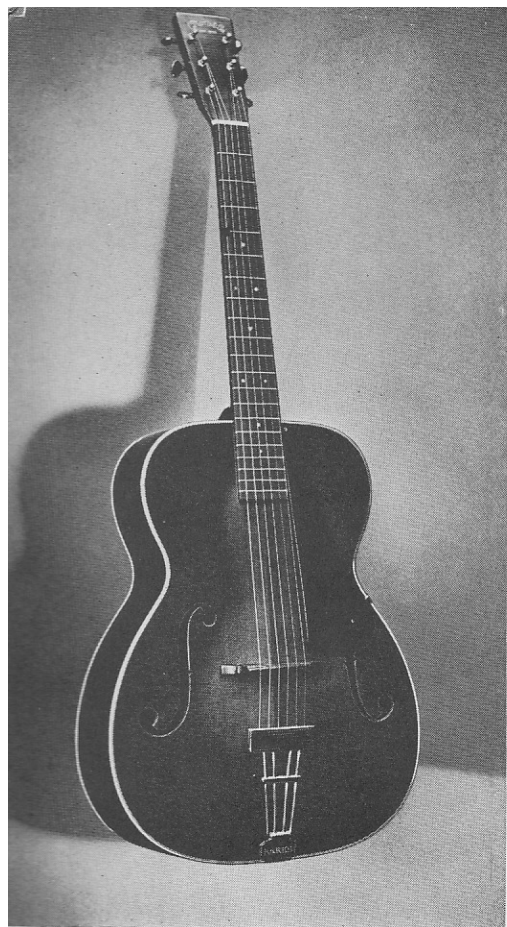
ARCHED MODEL

ROSEWOOD body, auditorium size, with carved spruce top, bound and inlaid with ivoroid and pearl. Mahogany neck re-enforced with steel T-bar, ebony fingerboard bound with ivoroid; hard alloy frets, very wide and low. Adjustable ebony bridge, elevated pick-guard bound with ivoroid, nickel-plated trimmings. Hand-polished lacquer finish, top shaded golden brown color, back and sides natural rich rosewood brown.

The balanced and fluent tone, easy fingering, and fine lines of this guitar have won the praise of many good players.

PRICE

No. C-2 Auditorium\$125.00



STYLE C-1

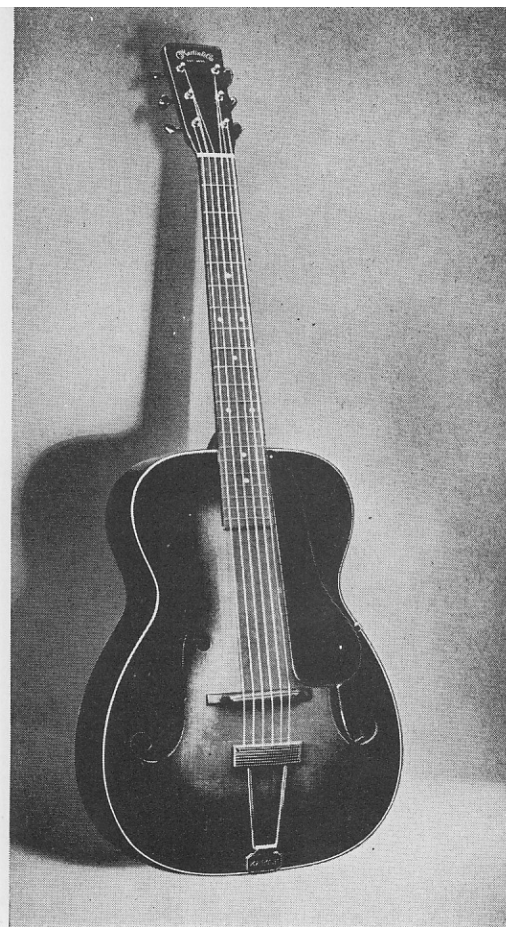
ARCHED MODEL

MAHOGANY body, carved spruce top, bound with ivoroid, fitted with adjustable ebony bridge, elevated pick-guard and nickel-plated engraved tailpiece. Mahogany neck, re-enforced with steel T-bar, joined to the body at the fourteenth fret; ebony fingerboard inlaid with pearl position dots, wide nickel-silver frets. Hand-polished lacquer finish, mahogany parts dark, spruce top shaded golden brown color. Body size 15 by 19 $\frac{3}{8}$ inches.

PRICE

No. C-1 Auditorium\$80.00

The mahogany used in Martin instruments comes from tropical America. In three-inch lumber for necks and in quarter-sawn veneer for bodies it is air-dried and carefully matched in color and grain; that means fine tone and appearance.



STYLE R

ARCHED MODEL

CARVED spruce top with graduated braces, mahogany back and sides edged with dark fiberloid, inlaid with black and white lines. Mahogany neck, re-enforced with steel T-bar, rosewood fingerboard with wide frets. Adjustable rosewood bridge, elevated pick-guard, nickel-plated trimmings. Polished lacquer finish, dark mahogany color, top shaded golden brown. Body size 14 $\frac{5}{8}$ by 18 $\frac{7}{8}$ inches.

PRICES

No. R-18 Grand Concert\$55.00

The same model with arched mahogany top, less inlay and plainer trimmings:

No. R-17 Grand Concert.....\$40.00



STYLE 45

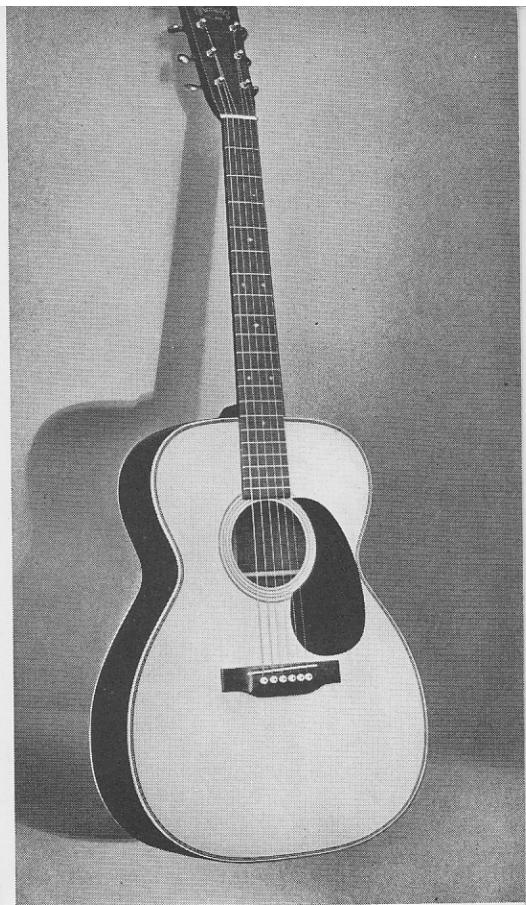
ORCHESTRA MODEL

A BEAUTIFUL guitar both in tone and in appearance. Selected rosewood back and sides, spruce top, all borders neatly inlaid with mother-of-pearl. Edges of body, fingerboard and head bound with ivoroid. Fancy pearl position marks; pearl inlaid bridge pins. Chromium-plated tuning machines, new single unit all-metal style. Hand-polished lacquer finish.

PRICE

No. 000-45 Auditorium\$175.00

Rosewood is selected for the finest Martin guitars because of its resonant tone quality. The wood grows in Brazil, is very hard, and takes a beautiful finish, showing the matched grain and rich dark color.



STYLE 28

ORCHESTRA MODEL

THIS is the original orchestra model guitar, designed in 1929 as the first guitar with fourteen frets clear of the body. It has stood the test of professional use, especially for broadcasting and recording.

Rosewood body bound with ivoroid, bordered and inlaid with black and white marqueterie. Fine vertical grain spruce top, finished natural color. Ebony fingerboard, well rounded, with hard nickel-silver frets wide and low. Tortoise-shell celluloid pick-guard. Hand-polished lacquer finish. *Dark color top on request at no extra charge.*

PRICE

No. 000-28 Auditorium\$90.00



STYLE D

ORCHESTRA MODEL

THIS is the famous "Dreadnaught" bass guitar, originated by Martin in 1917 and now modernized for the plectrum style of playing. The extra wide and very deep body produces a tone of great power and smoothness, especially fine for broadcasting or recording.

Rosewood body, spruce top, ivoroid edges, re-enforced mahogany neck, ebony fingerboard and bridge, wide frets, polished lacquer finish. *Dark top on request at no extra charge.*

PRICES

No. D-28 Dreadnaught\$100.00

The same model with mahogany body, spruce top, dark edges, and less inlay:

No. D-18 Dreadnaught\$65.00



STYLE 18

ORCHESTRA MODEL

MAHOGANY body, finished dark, with natural color spruce top. Edges bound with dark fiberloid; sound hole and top border inlaid with black and white lines. Mahogany neck, ebony fingerboard and bridge. Pearl position dots and white side dots. Nickel-plated tuning machines, new single unit all-metal type. Hand-polished lacquer finish.

This style will be furnished with dark color top instead of natural finish on request at no extra charge.

PRICES

No. 0-18 Concert\$40.00

No. 00-18 Grand Concert 45.00

No. 000-18 Auditorium 55.00



STYLE 17



FLAT MODEL

ORCHESTRA TENOR MODEL GUITAR

MAHOGANY body and top, black and white lines inlaid around sound hole. Mahogany neck, re-enforced with steel T-bar, joined to the body at the 14th fret with a deep, hand-fitted dovetail joint. Rosewood fingerboard, well rounded for easy fingering, wide nickel-silver frets, white position dots. Polished lacquer finish, dark mahogany color. Nickel-plated tuning machines, single-unit style, with polished nickel buttons.

PRICES

No. 0-17 Concert\$30.00
No. 00-17 Grand Concert 35.00

THESE tenor guitars have the regular twenty-three-inch scale for A-D-G-C tuning; otherwise they are like the corresponding six-string models. All have the full-size guitar bodies except No. 5-17T which is 11¼ inches wide. In the Arched Models the top is carved and the bridge is adjustable.

FLAT MODEL

PRICES

No. 5-17T Junior Size\$25.00
No. 0-17T Concert 30.00
No. 0-18T Concert 40.00

ARCHED MODEL

PRICES

No. R-18T Grand Concert 55.00
No. C-1T Auditorium 80.00



STANDARD MODEL

IN THIS model many features of the classical guitar, including the twelve-fret neck, wide fingerboard, and light braces are retained. It is made for stock in three styles, listed on the next page, all having spruce tops, mahogany necks and ebony fingerboards. Steel strings, Spanish style, are regular equipment; but Hawaiian steel strings with nut re-adjuster, or Spanish gut-strings, can also be furnished at no extra charge. A pick-guard is optional.

For use with gut and silk strings only we make on special order very light guitars, too light for steel strings, in the standard model and any desired style. There is an extra charge of five dollars for these custom-built guitars; delivery about four weeks.

LIST OF STANDARD MODEL GUITARS

Concert and Grand Concert Sizes

STYLE 21. Rosewood body, bound with dark fiberloid. Marqueterie inlay around sound hole. Nickel-plated tuning machines.

No. 0-21	Concert	\$55.00
No. 00-21	Grand Concert	60.00

STYLE 28 (illustration on page 14). Rosewood body, bound with ivoroid. Marqueterie border and back center strip. Ivoroid bridge pins inlaid with black dot.

No. 0-28	Concert	\$75.00
No. 00-28	Grand Concert	80.00

STYLE 42. Rosewood body, bound with ivoroid. Top bordered with mother-of-pearl. Fancy pearl position marks. Fingerboard bound with ivoroid.

No. 0-42	Concert	\$110.00
No. 00-42	Grand Concert	115.00

GUT-STRING GUITAR

SPECIAL light construction for gut and silk strings only, twelve-fret neck, wide ebony fingerboard, mahogany body, spruce top, hand-polished lacquer finish. This is a stock style made of selected wood over the old gut-string guitar patterns.

PRICE

No. 00-18G	Grand Concert	\$50.00
------------	---------------	-------	---------



STYLE 40H

HAWAIIAN GUITAR

THIS guitar is made especially for Hawaiian playing, with flat fingerboard, flush frets, level bridge and high nut. Selected rosewood and spruce body, inlaid with fine pearl and marqueterie. Mahogany neck, ebony fingerboard and bridge, pearl position marks, ivory nut and saddle. Polished lacquer finish, natural color; *dark color top on request.*

Rich in tone, with plenty of volume for concert work, beautiful in appearance, properly built and adjusted for Hawaiian playing only, this is a splendid guitar for professional use.

PRICE

No. 00-40H Grand Concert\$100.00



STYLE 18H

HAWAIIAN GUITAR

MAHOGANY body with spruce top, shaded dark color, polished lacquer finish; fine white line inlay, pearl position dots. Flat ebony fingerboard with flush frets, high nut and bridge, for Hawaiian playing only.

PRICE

No. 00-18H Grand Concert\$45.00

STYLE 17H

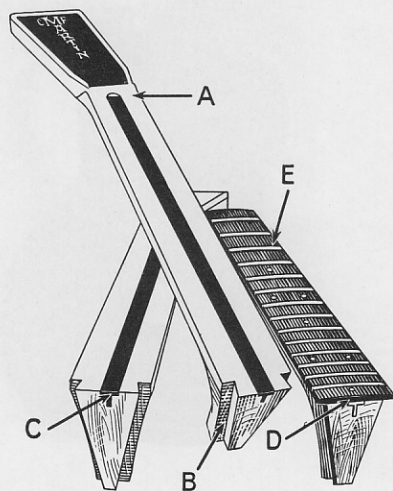
Same model but smaller and plainer; mahogany top instead of spruce, rosewood fingerboard and bridge.

PRICE

No. 0-17H Concert\$30.00

GUITAR NECKS

ALL Martin Arched Model and Orchestra Model guitars have mahogany necks, re-enforced with a steel T-bar, hand-shaped and fitted. This picture shows some of the notable features of these necks:



- A. Solid mahogany, air-dried, quarter-sawn, hand shaped, $1\frac{3}{4}$ inches wide at the nut.
- B. Deep dove-tail joint, hand fitted.
- C. Steel T-bar inlaid from first to fifteenth frets.
- D. Oval fingerboard, hand fretted after gluing to neck.
- E. Wide frets made of hard nickel-silver T-wire, low and smooth.

GUITAR SIZES

MARTIN guitars are made in several sizes to meet the needs of the players. In addition to the stock sizes listed for each style, in the Orchestra and Standard Models, other sizes can be made on special order; prices will be quoted on request. Special small guitars for ladies and children can be furnished, in Standard Model only, at the same price as concert size in any style.

The principal outside dimensions of the stock sizes are, in inches:

ARCHED MODEL

	SIZE R	C	F
Total Length	$38\frac{3}{8}$	$39\frac{1}{8}$	$39\frac{7}{8}$
Body Length	$18\frac{7}{8}$	$19\frac{3}{8}$	20
Body Width	$14\frac{5}{8}$	15	16
Body Depth	$4\frac{1}{4}$	$4\frac{1}{8}$	$4\frac{1}{8}$

ORCHESTRA MODEL

	SIZE No. 0	00	000	D
Total Length	$38\frac{3}{8}$	$38\frac{5}{8}$	$39\frac{3}{8}$	$40\frac{1}{4}$
Body Length	$18\frac{1}{8}$	$18\frac{3}{8}$	$19\frac{1}{8}$	20
Body Width	$13\frac{1}{2}$	$14\frac{1}{8}$	15	$15\frac{5}{8}$
Body Depth	$4\frac{1}{4}$	$4\frac{1}{8}$	$4\frac{1}{8}$	$4\frac{7}{8}$

STANDARD MODEL

	SIZE No. 0	00
Total Length	$37\frac{3}{4}$	$38\frac{1}{4}$
Body Length	$19\frac{7}{8}$	$19\frac{1}{2}$
Body Width	$13\frac{1}{2}$	$14\frac{1}{8}$
Body Depth	$4\frac{1}{4}$	$4\frac{1}{8}$

TENOR MODEL

	SIZE No. 5	0	R	C
Total Length	34	35	$36\frac{3}{8}$	37
Body Length	$15\frac{7}{8}$	$17\frac{1}{8}$	$18\frac{7}{8}$	$19\frac{3}{8}$
Body Width	$11\frac{1}{4}$	$13\frac{1}{2}$	$14\frac{5}{8}$	15
Body Depth	$3\frac{7}{8}$	$4\frac{1}{8}$	$4\frac{1}{4}$	$4\frac{3}{8}$



STYLE 2-30



STYLE 2-20

MANDOLIN

THE beauty of this new model is equalled by its smooth, clear tone, due to the use of air-dried curly maple and spruce, quarter-sawn and matched to show the fine grain and fiddle-back figure. Built like a violin, with carved top and back, it is finely bound and inlaid on all edges, fitted with chromium-plated trimmings and finished in a rich dark color with hand-polished lacquer. Scale is $13\frac{3}{4}$ inches; neck joined to the body at the 12th fret to make fingering easy.

PRICE
No. 2-30\$135.00

The maple used in Martin mandolins is white and hard, quarter-sawn to bring out the beautiful curly figure. In the back this figure is matched, as in a violin, and the sides are selected for similar figure.

MANDOLIN

NEW features in this mandolin are the $13\frac{3}{4}$ -inch scale, long neck joined to the body at the 12th fret, F-scrolls, and dark finish. Curly maple back and sides, spruce top, ebony fingerboard and bridge; top and back carved and graduated like a violin.

PRICE
No. 2-20\$85.00

STYLE 20

Old model with shorter neck, 13-inch scale, sound hole instead of F-scrolls, light top; otherwise like No. 2-20.

PRICE
No. 20\$75.00



STYLE 2-15



STYLE A

MANDOLIN MANDOLIN

IN THIS new model the neck joins the body at the 12th fret, scale is $13\frac{3}{4}$ inches long, maple back and spruce top are carved from air-dried wood. F-scrolls instead of sound hole, ebony fingerboard and bridge. Body bound with ivoroid, trimmings nickel-plated. Polished lacquer finish, golden brown color.

PRICE

No. 2-15\$50.00

STYLE 15

Sound hole model, 13-inch scale, neck joined to body at 10th fret, top natural spruce color; otherwise like No. 2-15.

PRICE

No. 15\$45.00

MAHOGANY body and neck, spruce top, ebony fingerboard and bridge. Rosewood head veneer, small white dots on face and edge of fingerboard. Body bound with fiberloid, black and white border and sound hole ring. Nickel-plated tailpiece and machines. Dark finish, top shaded golden brown. *Natural color top on request.*

PRICE

Style A Mandolin\$25.00

STYLE A-K. Same as Style A, but the body and top are koawood in natural finish.

Style A-K Mandolin\$25.00

STYLE B. Rosewood body with spruce top, natural color; same model as Style A, with more inlay.

Style B Mandolin\$40.00



STYLE MC-1

MANDO-CELLO

MAHOGANY body with arched spruce top, carved and graduated like a violin. Edges bound with ivory fiberloid. Nickel-plated tail-piece and single unit all-metal tuning machines for eight strings. Hand-polished lacquer finish, dark color.

PRICE

No. MC-1 Mando-Cello\$85.00

TENOR MANDOLAS

SIMILAR to the corresponding mandolins, but larger and tuned a fifth lower.

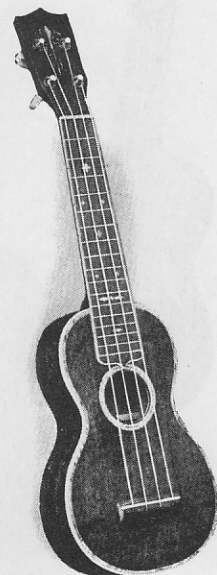
PRICES

Style B Mandola\$50.00
Style A Mandola 30.00

STYLE 5K

UKULELE

FIGURED Hawaiian koawood body and top, mahogany neck, ebony fingerboard bound with ivory-celluloid, koa bridge, figured koa head veneer inlaid with pearl scroll, ivory saddle and nut. Fine patent pegs. Pearl inlay around sound hole and along front and back edges of body. Elaborate pearl position marks, black side dots. Polished finish. An instrument combining tone and handsome appearance for professional use.



PRICE

No. 5K\$50.00

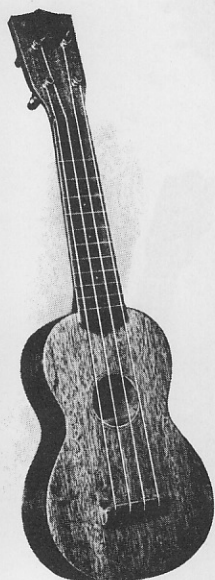
STYLE 3

UKULELE

MAHOGANY body and neck, finished dark color. Body bound and neatly inlaid with ivory-celluloid. Ebony fingerboard, seventeen frets, pearl position marks, white side dots, ivory nut and bridge saddle, nickel-plated pegs with ivoroid buttons.

PRICES

No. 3\$25.00
No. 3K Koa 27.50



STYLE 0

UKULELE

MAHOGANY body and neck, finished natural color. Black and white ring inlaid around sound hole. Rosewood fingerboard, three white position dots. Ebony nut and bridge saddle. Nickel-plated pegs, black buttons.

PRICE

No. 0\$10.00

STYLE 1. Dark mahogany body and neck, top edge bound and bordered with black and white lines. Rosewood fingerboard, four white position dots. Nickel-plated pegs.

No. 1\$12.50

STYLE 1K. Same as Style 1 except Hawaiian koawood body finished natural color.

No. 1K\$12.50

STYLE 2. Mahogany body and neck, finished dark color. Edges bound with ivoroid. Top bordered and inlaid with black and white lines. Rosewood fingerboard, ebony nut and bridge saddle. Nickel-plated patent pegs with ivoroid buttons.

No. 2\$15.00

CONCERT UKULELE

STYLE 1C. Larger body and longer scale, producing more volume of tone; otherwise like Style 1 ukulele above.

No. 1C\$15.00



STYLE 1T

TENOR UKULELE

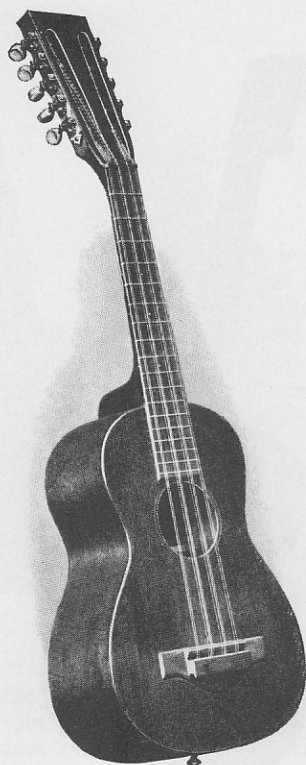
MAHOGANY body and neck, rosewood fingerboard and bridge. White position marks and side dots, ebony nut, ivory bridge saddle. Body bound with rosewood, bordered and inlaid with black and white wood. Lacquer finish, dark mahogany color. Patent pegs, nickel-plated, with black buttons.

The body is $8\frac{7}{8}$ inches wide at the bridge, with a string length of 17 inches. With heavy gut strings, it can be tuned like a guitar, a fifth lower than a ukulele; with lighter strings, regular ukulele tuning can be used.

PRICE

No. 1T\$20.00

The tenor ukulele makes the rich guitar tone available to the ukulele player. It is a fine instrument for song accompaniment and novelty effects.



STYLE T-17

TIPLE

MAHOGANY body and neck; rosewood head veneer, bridge and fingerboard. White position dots and side dots. Ring of white and black veneer inlaid around sound hole. Brass patent heads, with ivory-celluloid buttons. Lacquer finish, natural color.

Strung with ten strings, in three groups; tuned and played like a ukulele.

PRICE
No. T-17\$25.00

STYLE T-18

Mahogany, with spruce top; bound with rosewood.

PRICE
No. T-18\$35.00

STYLE T-28

Rosewood, with spruce top; bound with ivoroid.

PRICE
No. T-28\$50.00

MARTIN STRINGS

PACKED in glassine envelopes, each dozen or set wrapped in cellophane. The gross prices apply on half-gross quantities of plain steel strings and one-third gross of all other strings and sets.

SPANISH GUITAR, BRONZE

Wound on special hexagon steel wire. Bass strings polished. Heavy gauge.

No.	BALL ENDS	EACH	DOZEN	GROSS
111-E	Polished steel	\$0.10	\$1.00	\$10.00
112-B	Bronze wound20	2.00	20.00
112½-B	Polished steel10	1.00	10.00
113-G	Bronze wound20	2.20	22.00
114-D	Bronze wound25	2.50	25.00
115-A	Bronze wound30	3.00	30.00
116-E	Bronze wound35	3.50	35.00
117	Set of Six (wound 2nd)	1.35	13.50	135.00
117½	Set of Six (plain 2nd)	1.25	12.50	125.00

SPANISH GUITAR, MONEL

Wound on piano steel wire. Medium gauge.

No.	BALL ENDS	EACH	DOZEN	GROSS
101-E	Polished steel	\$0.10	\$1.00	\$10.00
102-B	Monel wound15	1.70	17.00
102½	Polished steel10	1.00	10.00
103-G	Monel wound15	1.70	17.00
104-D	Monel wound20	1.90	19.00
105-A	Monel wound20	2.20	22.00
106-E	Monel wound25	2.50	25.00
107	Set of Six (wound 2nd)	1.00	10.00	100.00
107½	Set of Six (plain 2nd)	.95	9.50	95.00

SPANISH GUITAR, GUT

Violin gut treble, silk center bass strings.

No.	EACH	DOZEN
121-E	Trued gut, white	\$0.35 \$3.70
122-B	Trued gut, white45 4.70
123-G	Trued gut, white50 5.50
124-D	Silver wound on silk20 2.20
125-A	Silver wound on silk25 2.50
126-E	Silver wound on silk30 3.00
127	Set of Six	2.00 21.60

HAWAIIAN GUITAR

Heavy gauge piano wire; bass strings wound with polished copper.

No.	BALL ENDS	EACH	DOZEN	GROSS
201-E	Polished steel	\$0.10	\$1.00	\$10.00
202-C#	Polished steel10	1.00	10.00
203-A	Polished steel10	1.00	10.00
204-E	Copper wound30	2.80	28.00
205-A	Copper wound35	3.50	35.00
206-E	Copper wound40	4.20	42.00
207	Set of Six	1.30	13.00	130.00

TENOR GUITAR

Monel wound on piano steel wire.

No.	BALL ENDS	EACH	DOZEN	GROSS
301-A	Polished steel	\$0.10	\$1.00	\$10.00
302-D	Polished steel10	1.00	10.00
303-G	Monel wound20	2.00	20.00
304-C	Monel wound20	2.00	20.00
305	Set of Four60	6.00	60.00

MANDOLIN

Bronze wound, polished.

No.	LOOP ENDS	EACH	DOZEN	GROSS
401-E	Polished steel	\$0.10	\$1.00	\$10.00
402-A	Polished steel10	1.00	10.00
403-D	Bronze wound20	2.00	20.00
404-G	Bronze wound25	2.50	25.00
405	Set of Eight	1.25	12.50	125.00

UKULELE

Trued violin gut, accurately gauged.

No.	EACH	DOZEN
601-B	White gut	\$0.20 \$2.00
602-F#	White gut25 2.80
603-D	White gut25 3.00
604-A	White gut20 2.20
605	Set of Four90 10.00

TIPLE

Three wound and seven plain steel. (Sold in sets only.)

No.	EACH	DOZEN
No. 650	Set of Ten	\$1.00 \$10.00

CASES

CASES to fit the instruments listed in this catalogue are supplied in these styles:

STYLE B—Flannel lining, black ostrich grain keratol covering, heavy chipboard body, chain stitched edges, keratol bound; string pocket; plated steel trimmings.

STYLE C—Duvetyn lining, padded; heavy black grained keratol covering, three-ply wood body; neck rest and string pocket; leather strap handle; brass lock and trimmings nickel-plated.

STYLE D—Rayon silk plush lining, heavily padded. Construction and covering like Style C. Nickel-plated brass lock and trimmings.

PRICES

	B	C	D
Guitar, Size 0	\$7.50	\$15.00	\$25.00
Guitar, Size 00	8.00	15.00	25.00
Guitar, Size 000	8.50	15.00	25.00
Guitar, Model R	8.00	15.00	
Guitar, Model C	8.50	15.00	25.00
Guitar, Model D	9.00	16.50	27.00
Guitar, Model F		16.50	27.00
Tenor Guitar, 5T	7.00	13.50	20.00
Tiple	5.00	8.50	
Ukulele	3.50	7.00	12.00
Concert Ukulele	4.00		
Tenor Ukulele	4.50	9.00	
Mandolin, Flat	5.00	9.00	15.00
Mandolin, Carved	5.50	10.00	16.50
Tenor Mandola	6.00	12.00	
Mando-Cello	8.50	15.00	25.00

PICKS

SELECT quality, beveled edges, polished finish, medium size and stiffness, suitable for general use on guitar or mandolin; stamped "Martin."

PRICES

	Each	Dozen	Gross
No. 138	Tortoise shell \$0.25	\$2.70	\$27.00
No. 38	Celluloid10	.80	8.00

HISTORICAL SKETCH

THE founder of the House of Martin, C. F. Martin, Sr., was born in Mark Neukirchen, Saxony, in 1796. He learned the trade of guitar making there and emigrated to New York, where, in 1833, the first Martin guitars were made.

In 1839 he moved his business and his family to Nazareth, Pa., but the guitars he made were still branded "C. F. Martin, New York." This was changed to "C. F. Martin & Co., New York," in 1867, when C. F. Martin, Jr., became a partner; and that brand was used until F. H. Martin, grandson of the founder, changed it in 1898 to "C. F. Martin & Co., Nazareth, Pa." Since 1839 all Martin guitars have been made at Nazareth under the direct supervision of the founder or his descendants.

Mandolins and ukuleles were added with the appearance of popular demand for them—mandolins in 1895 and ukuleles in 1915. These new instruments, designed and built on Martin guitar principles, brought new prestige and wider distribution; but the larger factory with its bigger staff is still owned and directed by F. H. Martin, who, with his son, C. F. Martin, 3rd, has full charge of the business.

The House of Martin

Since 1833

C. F. MARTIN, SR., 1796-1873

C. F. MARTIN, JR., 1825-1888

F. H. MARTIN, 1866-

C. F. MARTIN, 3rd, 1894-

H. K. MARTIN, 1895-1927

C. F. MARTIN & CO., Inc.

Established 1833—Incorporated 1921