

HISTORICAL SKETCH

THE founder of the House of Martin, C. F. Martin, Sr., was born in Mark Neukirchen, Saxony, in 1796. He learned the trade of guitar making there and emigrated to New York, where, in 1833, the first Martin guitars were made.

In 1839 he moved his business and his family to Nazareth, Pa., but the guitars he made were still branded "C. F. Martin, New York." This was changed to "C. F. Martin & Co., New York" in 1867, when C. F. Martin, Jr., became a partner; and that brand was used until F. H. Martin, grandson of the founder, changed it in 1898 to "C. F. Martin & Co., Nazareth, Pa." Since 1839 all Martin guitars have been made at Nazareth under the direct supervision of the founder or his descendants.

Mandolins and ukuleles were added with the appearance of popular demand for them—mandolins in 1895 and ukuleles in 1915. These new instruments, designed and built on Martin guitar principles, brought new prestige and wider distribution; but the larger factory with its bigger staff is still owned and directed by F. H. Martin, who, with his son, C. F. Martin, 3rd, has full charge of the business.

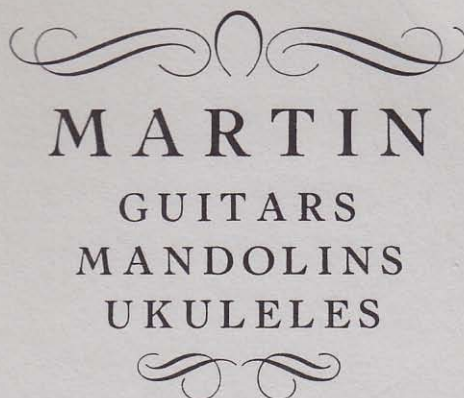
THE HOUSE OF MARTIN

Since 1833

C. F. MARTIN, SR., 1796-1873
C. F. MARTIN, JR., 1825-1888
F. H. MARTIN, 1866-
C. F. MARTIN, 3rd, 1894-
H. K. MARTIN, 1895-1927

C. F. MARTIN & CO., INC.

Established 1833—Incorporated 1921



Retail Catalogue



C. F. Martin & Co., Inc.
Nazareth, Pa.
U. S. A.



PRINTED IN U. S. A.

JULY 1935



FOR THE IDENTIFICATION AND DATING
OF
VINTAGE GUITARS, MANDOLINS AND BANJOS
CATALOGS FROM THE COLLECTION OF GEORGE YOUNGBLOOD

These are scans of catalogs originally distributed to the public to describe the manufacturer's products available for sale at one point in time.

The intended use for these catalogs is historical research: vintage instrument identification and dating.

These catalogs are not offered here for sale or re-sale – They are only for the academic purpose of instrument identification, research and historical context. Please respect their use and do not reproduce, copy or distribute this information for any other purpose.

It is important to note that instrument catalogs are not always accurate in their descriptions of instrument specifications or the images used. While product improvements were constantly being made; catalogs often used older existing drawings, etchings or photographs. In some cases instruments were offered in catalogs that had been discontinued for years. For these reasons, catalogs can only be used as general guides for the dating and identification of vintage instruments.

If you are having trouble with some of the instruments details, we may be able to help. Feel free to contact us at:

ACOUSTICMUSIC.ORG:

<http://www.AcousticMusic.Org>

FOREWORD

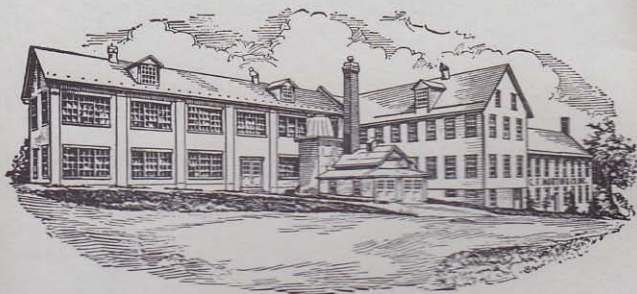
MORE than a hundred years ago C. F. Martin, Sr., established the principles of construction and the ideals of workmanship that govern the manufacture of Martin guitars and kindred instruments today. His descendants of the third and fourth generations, mindful of changing times and new conditions, have added tested improvements in design and construction to meet the needs of modern players; but the old standards of excellent materials and careful workmanship are still the basis of Martin quality.

WARRANTY

All Martin instruments are warranted, without time limit, against defective material or imperfect workmanship.

C. F. MARTIN & CO., INC.

ESTABLISHED 1833



Arched Model

STYLE F-9



REFINED in every detail this is the guitar de luxe for the modern player. To brilliance in tone is added the beauty of selected material, rich pearl and ivoroid inlay, engraved gold plated trimmings, lustrous lacquer finish—a masterpiece of design and workmanship.

Grand auditorium size, powerful and brilliant in tone, made of first choice spruce for the carved top, rosewood for the sides and the arched back, mahogany for the steel re-enforced neck, and ebony for the oval fingerboard. All edges bound with ivoroid and bordered with fine black and white lines. Authentic 'cello F-scrolls, adjustable ebony bridge, eight large position marks, genuine ivory nut, elevated pick-guard with double inlaid border. Top shaded golden brown color to match natural rosewood body and dark mahogany neck, all hand polished.

PRICE

No. F-9 Grand Auditorium.....\$250.00



Arched Model

STYLE F-7

SPRUCE top carved and graduated like a violin, arched rosewood back with graduated spruce braces. Mahogany neck re-enforced with steel T-bar, ebony fingerboard bound with ivoroid, pearl inlaid head, six large ivoroid position marks. Adjustable ebony bridge, elevated pick-guard bound with ivoroid. Hand-polished lacquer finish, top shaded golden brown color, chromium plated trimmings.

Grand auditorium size, body 16 by 20 inches; right in tone and in appearance for professional use.

PRICE

No. F-7 Grand Auditorium.....\$175.00



Arched Model

STYLE C-2

ROSEWOOD body, auditorium size, with carved spruce top, bound and inlaid with ivoroid and pearl. Mahogany neck re-enforced with steel T-bar, ebony fingerboard bound with ivoroid; extra hard alloy frets, wide and low. Adjustable ebony bridge, elevated pick-guard bound with ivoroid, nickel-plated trimmings. Hand-polished lacquer finish, top shaded golden brown color, back and sides natural rich rosewood brown.

The balanced and fluent tone, easy fingering, and fine lines of this guitar have won the praise of many good players.

PRICE

No. C-2 Auditorium.....\$125.00



Arched Model

STYLE C-1

MAHOGANY body, carved spruce top, bound with ivoroid, fitted with adjustable ebony bridge, elevated pick-guard and nickel-plated engraved tailpiece. Mahogany neck, re-enforced with steel T-bar, joined to the body at the fourteenth fret; ebony fingerboard inlaid with pearl position dots, wide frets made of extra hard nickel-silver wire. Hand-polished lacquer finish, mahogany parts dark, spruce top shaded golden brown color.

PRICE

No. C-1 Auditorium.....\$80.00

The mahogany used in Martin instruments comes from tropical America. In three-inch lumber for necks and in quarter-sawn veneer for bodies it is air-dried and carefully matched in color and grain; that means fine tone and appearance.



Arched Model

STYLE R

ARCHED spruce top with graduated braces, mahogany back and sides edged with dark fiberloid, inlaid with black and white lines. Mahogany neck, re-enforced with steel T-bar, rosewood fingerboard with wide frets. Adjustable rosewood bridge, elevated pick-guard, nickel-plated trimmings. Polished lacquer finish, dark mahogany color, top shaded golden brown.

PRICES

No. R-18 Grand Concert.....\$55.00

The same model with arched mahogany top, less inlay and plainer trimmings:

No. R-17 Grand Concert.....\$40.00



Orchestra Model

STYLE 45

A DE LUXE guitar both in tone and in appearance. Selected rosewood back and sides, spruce top, all borders neatly inlaid with mother-of-pearl. Edges of body, fingerboard and head bound with ivoroid. Fancy pearl position marks; pearl inlaid bridge pins. Gold-plated tuning machines, new single unit all-metal style. Hand-polished lacquer finish.

PRICE

No. 000-45 Auditorium.....\$175.00

Rosewood is selected for the finest Martin guitars because of its resonant tone quality. The wood grows in Brazil, is very hard, and takes a beautiful finish, showing the matched grain and rich dark color.



Orchestra Model

STYLE 28

THIS is the original orchestra model guitar, designed in 1929 as the first guitar with fourteen frets clear of the body. It has stood the test of professional use, especially for broadcasting and recording.

Rosewood body bound with ivoroid, bordered and inlaid with black and white marquerie. Fine vertical grain spruce top, finished natural color. Ebony fingerboard, well rounded, with hard nickel-silver frets wide and low. Tortoise-shell celluloid pick-guard. Hand polished lacquer finish. Dark color top on special order at no extra charge.

PRICE

No. 000-28 Auditorium.....\$90.00



Orchestra Model

STYLE 18

MAHOGANY body, finished dark, with natural color spruce top. Edges bound with dark fiberloid; soundhole and top border inlaid with black and white lines. Mahogany neck, ebony fingerboard and bridge. Pearl position dots and white side dots. Nickel plated tuning machines, new single unit all-metal type. Hand rubbed lacquer finish.

This style will be furnished with dark color top instead of natural finish on special order at no extra charge.

PRICES

| | |
|------------------------------|---------|
| No. 0-18 Concert..... | \$40.00 |
| No. 00-18 Grand Concert..... | \$45.00 |
| No. 000-18 Auditorium..... | \$55.00 |



Orchestra Model

STYLE 17

MAHOGANY body and top, black and white lines inlaid around sound hole. Mahogany neck, re-enforced with steel T-bar, joined to the body at the 14th fret with a deep, hand-fitted dovetail joint. Rosewood fingerboard, well rounded for easy fingering, wide nickel-silver frets, white position dots. Semi-gloss lacquer finish, dark mahogany color. Nickel-plated tuning machines, single-unit style, with dark polished celluloid buttons.

PRICES

| | |
|------------------------------|---------|
| No. 0-17 Concert..... | \$30.00 |
| No. 00-17 Grand Concert..... | \$35.00 |



Orchestra Model

STYLE D

THIS is the famous "Dreadnaught" bass guitar, originated by Martin in 1917 and now modernized for the plectrum style of playing. The extra wide and very deep body produces a tone of great power and smoothness, especially fine for broadcasting or recording.

Rosewood body, spruce top, ivoroid edges, re-enforced mahogany neck, ebony fingerboard and bridge, wide frets, polished lacquer finish. Dark top on special order at no extra charge.

PRICES

No. D-28 Dreadnaught.....\$100.00

The same model with mahogany body, spruce top, dark edges, and less inlay:

No. D-18 Dreadnaught.....\$65.00



Hawaiian Guitar

STYLE 40H

ROSEWOOD body with selected spruce top, bound with ivoroid and bordered with pearl. Mahogany neck, ebony fingerboard and bridge, fine pearl position marks. Genuine ivory nut and saddle. Nickel-plated single unit tuning machines; polished lacquer finish.

For Hawaiian playing only, with high nut, high and level bridge, frets flush with the fingerboard. A fine guitar for professional use.

PRICE

No. 00-40H Grand Concert.....\$100.00

STYLE 18K

Similar model with Hawaiian koawood body, neatly bound and inlaid with black and white lines. Frets flush with fingerboard for Hawaiian style only; or, on special order, raised frets for Spanish style also.

PRICE

No. 0-18K Concert.....\$45.00



Standard Model

IN this model many features of the classical guitar, including the twelve-fret neck, wide fingerboard, and light braces, are retained. It is made for stock in four styles, listed on the next page, all having spruce tops, mahogany necks and ebony fingerboards. Steel strings, Spanish style, are regular equipment; but Hawaiian steel strings with nut readjuster, or Spanish gut strings, can also be furnished at no extra charge. A pick-guard is optional.

Gut String Guitars

For use with gut and silk strings only we make on special order very light guitars, too light for steel strings, in the standard model and any desired style. There is an extra charge of five dollars for these custom built guitars; delivery about four weeks.

LIST OF STANDARD MODEL GUITARS

Concert and Grand Concert Sizes

Style 21. Rosewood body, bound with black fiberloid. Marqueterie inlay around sound-hole. Nickel plated tuning machines.

No. 0-21 Concert.....\$55.00

No. 00-21 Grand Concert.....\$60.00

Style 28 (illustration on page 14). Rosewood body, bound with ivoroid. Marqueterie border and back center strip. Ivoroid bridge pins inlaid with black dot.

No. 0-28 Concert.....\$75.00

No. 00-28 Grand Concert.....\$80.00

Style 42. Rosewood body, bound with ivoroid. Top bordered with mother-of-pearl. Fancy pearl position marks. Fingerboard bound with ivoroid.

No. 0-42 Concert.....\$110.00

No. 00-42 Grand Concert.....\$115.00

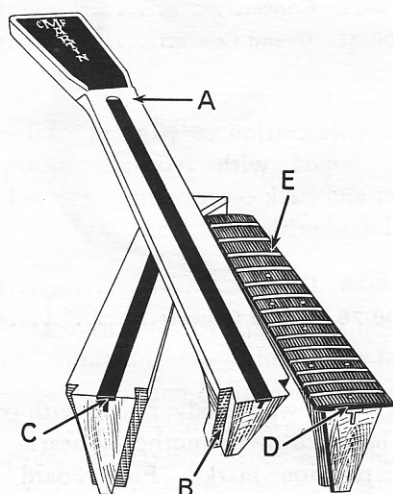
Style 45. Selected rosewood body, bound with ivoroid and bordered all around with pearl inlay. Fingerboard and head bound with ivoroid. Hand polished lacquer finish. A de luxe guitar.

No. 0-45 Concert.....\$155.00

No. 00-45 Grand Concert.....\$160.00

Guitar Necks

ALL Martin Arched Model and Orchestra Model guitars have mahogany necks, reinforced with a steel T-bar, hand-shaped and fitted. This picture shows some of the notable features of these necks:



- A. Solid mahogany, air-dried, quarter sawn, hand shaped, $1\frac{3}{4}$ " wide at the nut
- B. Deep dove-tail joint, hand fitted
- C. Steel T-bar inlaid from first to fifteenth frets
- D. Oval fingerboard, hand fretted after gluing to neck
- E. Wide frets made of special hard nickel silver T-wire

Guitar Sizes

MARTIN guitars are made in several sizes to meet the needs of the players. In addition to the stock sizes listed for each style, in the Orchestra and Standard Models, other sizes can be made on special order; prices will be quoted on request. Special small guitars for ladies and children can be furnished, in Standard Model only, at the same price as concert size in any style.

The principal outside dimensions of the stock sizes are, in inches:

ARCHED MODEL

| | Size R | C | F |
|--------------------|------------------|-----------------|-----------------|
| Total Length . . . | $38\frac{3}{8}$ | $39\frac{1}{8}$ | $39\frac{7}{8}$ |
| Body Length . . . | $18\frac{7}{8}$ | $19\frac{3}{8}$ | 20 |
| Body Width . . . | $14\frac{5}{16}$ | 15 | 16 |
| Body Depth . . . | $4\frac{1}{4}$ | $4\frac{3}{16}$ | $4\frac{1}{8}$ |

ORCHESTRA MODEL

| | Size No. 0 | 00 | 000 | D |
|--------------------|------------------|------------------|-----------------|-----------------|
| Total Length . . . | $38\frac{3}{8}$ | $38\frac{5}{8}$ | $39\frac{3}{8}$ | $40\frac{1}{4}$ |
| Body Length . . . | $18\frac{3}{16}$ | $18\frac{7}{8}$ | $19\frac{3}{8}$ | 20 |
| Body Width . . . | $13\frac{1}{2}$ | $14\frac{5}{16}$ | 15 | $15\frac{5}{8}$ |
| Body Depth . . . | $4\frac{1}{4}$ | $4\frac{1}{8}$ | $4\frac{1}{8}$ | $4\frac{7}{8}$ |

STANDARD MODEL

| | Size No. 0 | 00 |
|--------------------|-----------------|-----------------|
| Total Length . . . | $37\frac{3}{4}$ | $38\frac{1}{4}$ |
| Body Length . . . | $19\frac{1}{3}$ | $19\frac{1}{2}$ |
| Body Width . . . | $13\frac{1}{2}$ | $14\frac{1}{8}$ |
| Body Depth . . . | $4\frac{1}{4}$ | $4\frac{1}{8}$ |



Tenor Guitar

ARCHED MODEL

THESE tenor guitars are the same in body size and construction as the six string styles C-1 and R-18 shown on pages six and seven. The string length is twenty-three inches, with adjustable bridge, internal gear pegs, pearl position dots and elevated pick-guard. Hand rubbed lacquer finish, dark color.

In style R-18T the spruce top is arched but not carved; in style C-1T it is carved and graduated in thickness like a violin.

PRICES

| | |
|------------------------------|---------|
| No. C-1T Auditorium..... | \$80.00 |
| No. R-18T Grand Concert..... | \$55.00 |



Tenor Guitar

FLAT MODEL

MAHOGANY body and neck, rosewood fingerboard and bridge, white position marks and side dots. Internal gear pegs, nickel plated, with ivoroid buttons. Semi-flat lacquer finish, natural mahogany color.

This style is made in two sizes: Junior (No. 5) size is 11 $\frac{1}{4}$ inches wide, Concert (No. 0) size is 13 $\frac{1}{2}$ inches wide at the bridge; both have a string length of 23 inches.

PRICES

| | |
|------------------------|---------|
| No. 5-17T Junior..... | \$25.00 |
| No. 0-17T Concert..... | \$30.00 |

Similar to style 17T but with spruce top and ebony fingerboard:

| | |
|------------------------|---------|
| No. 0-18T Concert..... | \$40.00 |
|------------------------|---------|



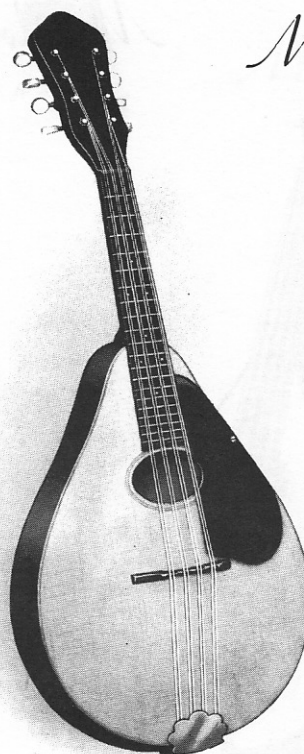
Mandolin

STYLE 20

CURLY maple back and sides, spruce top, maple neck with rosewood head veneer, ebony fingerboard and bridge. Top and back are carved from three-quarter inch quarter-sawn wood, graduated in thickness from edge to center. Body and fingerboard bound with ivory-celluloid. Pearl position dots, white side dots. Twenty frets. Nickel plated machines, engraved tailpiece. Elevated finger rest. Maple stained antique brown, spruce natural color, hand polished lacquer finish.

No. 20.....Price, \$75.00

The maple used in Martin mandolins is white and hard, quarter-sawn to bring out the beautiful curly figure.



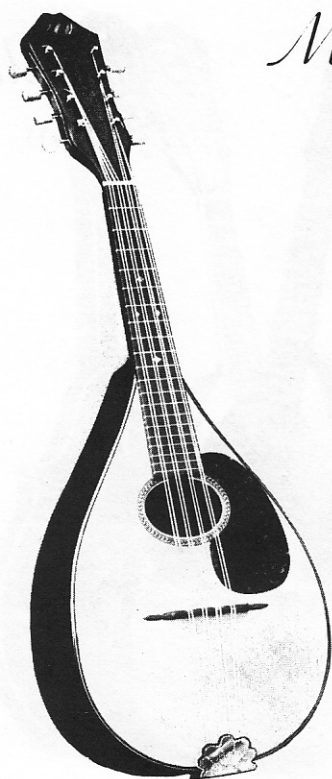
Mandolin

STYLE 15

M_APLE back and sides, spruce top, maple neck with rosewood head veneer, ebony fingerboard and bridge. Top and back are carved from three-quarter inch wood, graduated in thickness from edge to center. Body bound with ivoroid and neatly inlaid. Twenty frets of solid nickel-silver. Nickel plated machines and tailpiece. Elevated finger rest. Maple stained antique brown, spruce natural color, polished lacquer finish.

No. 15.....Price, \$45.00

The violin principle of carving the back and top out of thick wood makes a mandolin tone of pure quality and great power. A pure tone will always carry far.



Mandolin

STYLE B

ROSEWOOD body with top of spruce, mahogany neck, ebony fingerboard and bridge, twenty frets, body bound with rosewood, black and white wood inlay, pearl position marks, white side dots, ivory nut, covered machines and tailpiece, nicely embossed and nickel plated. Hand rubbed lacquer finish.

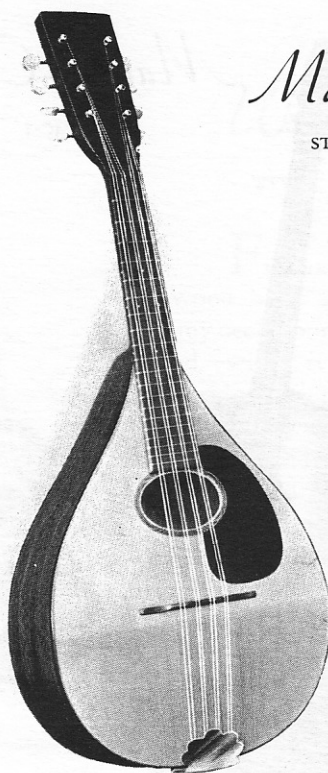
Style B.....Price, \$40.00

Tenor Mandolas

Similar to the corresponding mandolins, but larger and tuned a fifth lower.

Style B Mandola.....Price, \$50.00

Style A Mandola.....Price, \$30.00



Mandolin

STYLE A

MAHOGANY body and neck, spruce top, ebony fingerboard and bridge. Rosewood head veneer, small white dots on face and edge of fingerboard. Body bound with fiberloid, black and white border and soundhole ring. Nickel plated tailpiece and machines. Dark mahogany finish.

Style A Mandolin.....Price, \$22.50

STYLE AK

Same as Style A, but body and top of Hawaiian koawood.

Style AK Mandolin.....Price, \$25.00



Mando-Cello

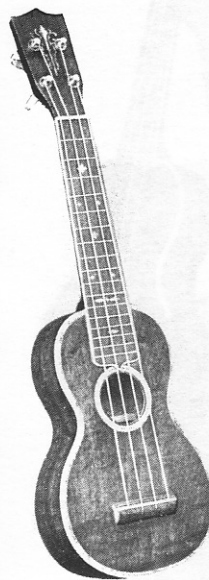
STYLE MC-1

MAHOGANY body with arched spruce top, carved and graduated like a violin. Edges bound with ivory fiberloid. Nickel plated tail-piece and single unit all-metal tuning machines for eight strings. Hand polished lacquer finish, dark color.

This mando-cello has a regular guitar body, auditorium size, that gives the tone a rich baritone quality and unusual volume for ensemble work. In a plectrum orchestra it completes the quartette of first mandolin, second mandolin, mandola, and mando-cello.

PRICE

No. MC-1.....\$85.00



Ukulele

STYLE 5K

FIGURED Hawaiian koawood body and top, mahogany neck, ebony fingerboard bound with ivory-celluloid, koa bridge, figured koa head veneer inlaid with pearl scroll, ivory saddle and nut. Fine patent pegs. Pearl inlay around soundhole and along front and back edges of body. Elaborate pearl position marks, black side dots. Polished finish. An instrument combining tone and handsome appearance for professional use.

No. 5K.....Price, \$50.00

Ukulele

STYLE 3

MAHOGANY body and neck, finished dark color. Body bound and neatly inlaid with ivory-celluloid. Ebony fingerboard, seventeen frets, pearl position marks, white side dots, ivory nut and bridge saddle, nickel-plated pegs with ivoroid buttons.

PRICES

No. 3.....\$25.00
No. 3K Koa.....\$27.50

Ukulele

STYLE 2

MAHOGANY body and neck, finished dark color. Edges bound with ivoroid. Top bordered and inlaid with black and white lines. Rosewood fingerboard, ebony nut and bridge saddle. Nickel plated patent pegs with ivoroid buttons.

No. 2.....Price, \$15.00

STYLE 1. Dark mahogany body and neck, top edge bound and bordered with black and white lines. Rosewood fingerboard, four white position dots. Nickel-plated pegs, black buttons.

No. 1.....Price, \$12.50

STYLE 1K. Same as style 1 except Hawaiian koawood body finished natural color.

No. 1K.....Price, \$12.50

STYLE O. Mahogany body and neck, finished natural color. Black and white ring inlaid around soundhole. Rosewood fingerboard, three white position dots. Ebony nut and bridge saddle. Nickel-plated pegs, black buttons.

No. 0.....Price, \$10.00

Concert Ukulele

STYLE 1C. Larger body and longer scale, producing more volume of tone; otherwise like style 1 ukulele above.

No. 1C.....Price, \$15.00



Tenor Ukulele

STYLE 1T



MAHOGANY body and neck, rosewood fingerboard and bridge. White position marks and side dots, ebony nut, ivory bridge saddle. Body bound with rosewood, bordered and inlaid with black and white wood. Lacquer finish, dark mahogany color. Patent pegs, nickel plated, with black buttons.

The body is $8\frac{7}{8}$ inches wide at the bridge, with a string length of 17 inches. With heavy gut strings, it can be tuned like a guitar, a fifth lower than a ukulele; with lighter strings, regular ukulele tuning can be used.

No. 1T.....Price, \$20.00

The tenor ukulele makes the rich guitar tone available to the ukulele player. It is a fine instrument for song accompaniment and novelty effects.



Tiple

STYLE T17

MAHOGANY body and neck; rosewood head veneer, bridge and fingerboard. White position dots and side dots. Ring of white and black veneer inlaid around sound-hole. Brass patent leads, with ivory-celluloid buttons. Lacquer finish, natural color.

Strung with ten strings, in three groups; tuned and played like a ukulele.

No. T17.....Price, \$25.00

TIPLE—STYLE T18

Mahogany, with spruce top; bound with rosewood.

No. T18.....Price, \$35.00

TIPLE—STYLE T28

Rosewood, with spruce top; bound with ivoroid.

No. T28.....Price, \$50.00

Martin Strings

PACKED in glassine envelopes, each dozen or set wrapped in cellophane. The gross prices apply on half gross quantities of plain steel strings and one-third gross of all other strings and sets.

Spanish Guitar, Bronze

Wound on special hexagon steel wire. Bass strings polished. Heavy gauge.

| No. | BALL ENDS | EACH | DOZEN | GROSS |
|--------|------------------------------|--------|--------|---------|
| 111-E | Polished steel | \$0.10 | \$1.00 | \$10.00 |
| 112-B | Bronze wound | .20 | 2.00 | 20.00 |
| 112½-B | Polished steel | .10 | 1.00 | 10.00 |
| 113-G | Bronze wound | .20 | 2.20 | 22.00 |
| 114-D | Bronze wound | .25 | 2.50 | 25.00 |
| 115-A | Bronze wound | .30 | 3.00 | 30.00 |
| 116-E | Bronze wound | .35 | 3.50 | 35.00 |
| 117 | Set of Six (wound 2nd) . . . | 1.35 | 13.50 | 135.00 |
| 117½ | Set of Six (plain 2nd) . . . | 1.25 | 12.50 | 125.00 |

Spanish Guitar, Monel

Wound on piano steel wire. Medium gauge.

| No. | BALL ENDS | EACH | DOZEN | GROSS |
|-------|------------------------------|--------|--------|---------|
| 101-E | Polished steel | \$0.10 | \$1.00 | \$10.00 |
| 102-B | Monel wound | .15 | 1.70 | 17.00 |
| 102½ | Polished steel | .10 | 1.00 | 10.00 |
| 103-G | Monel wound | .15 | 1.70 | 17.00 |
| 104-D | Monel wound | .20 | 1.90 | 19.00 |
| 105-A | Monel wound | .20 | 2.20 | 22.00 |
| 106-E | Monel wound | .25 | 2.50 | 25.00 |
| 107 | Set of Six (wound 2nd) . . . | 1.00 | 10.00 | 100.00 |
| 107½ | Set of Six (plain 2nd) . . . | .95 | 9.50 | 95.00 |

Spanish Guitar, Gut

Violin gut treble, silk center bass strings.

| No. | EACH | DOZEN |
|-------|--------------------------------|---------------|
| 121-E | Trued gut, white | \$0.35 \$3.70 |
| 122-B | Trued gut, white | .45 4.70 |
| 123-G | Trued gut, white | .50 5.50 |
| 124-D | Bronze wound on silk | .20 2.20 |
| 125-A | Bronze wound on silk | .25 2.50 |
| 126-E | Bronze wound on silk | .30 3.00 |
| 127 | Set of Six | 2.00 21.60 |

Hawaiian Guitar

Heavy gauge piano wire; bass strings wound with polished copper.

| No. | BALL ENDS | EACH | DOZEN | GROSS |
|-------|--------------------------------|--------|--------|---------|
| 201-E | Polished steel | \$0.10 | \$1.00 | \$10.00 |
| 202-C | Sharp polished steel | .10 | 1.00 | 10.00 |
| 203-A | Polished steel | .10 | 1.00 | 10.00 |
| 204-E | Copper wound | .30 | 2.80 | 28.00 |
| 205-A | Copper wound | .35 | 3.50 | 35.00 |
| 206-E | Copper wound | .40 | 4.20 | 42.00 |
| 207 | Set of Six | 1.30 | 13.00 | 130.00 |

Tenor Guitar

Monel wound on piano steel wire.

| No. | BALL ENDS | EACH | DOZEN | GROSS |
|-------|--------------------------|--------|--------|---------|
| 301-A | Polished steel | \$0.10 | \$1.00 | \$10.00 |
| 302-D | Polished steel | .10 | 1.00 | 10.00 |
| 303-G | Monel wound | .20 | 2.00 | 20.00 |
| 304-C | Monel wound | .20 | 2.00 | 20.00 |
| 305 | Set of Four | .60 | 6.00 | 60.00 |

Mandolin

Bronze wound, polished.

| No. | LOOP ENDS | EACH | DOZEN | GROSS |
|-------|--------------------------|--------|--------|---------|
| 401-E | Polished steel | \$0.10 | \$1.00 | \$10.00 |
| 402-A | Polished steel | .10 | 1.00 | 10.00 |
| 403-D | Bronze wound | .20 | 2.00 | 20.00 |
| 404-G | Bronze wound | .25 | 2.50 | 25.00 |
| 405 | Set of Eight | 1.25 | 12.50 | 125.00 |

Ukulele

Trued violin gut, accurately gauged.

| No. | | EACH | DOZEN |
|-------|---------------------------|--------|--------|
| 601-B | White gut | \$0.20 | \$2.00 |
| 602-F | Sharp White gut | .25 | 2.80 |
| 603-D | White gut | .25 | 3.00 |
| 604-A | White gut | .20 | 2.20 |
| 605 | Set of Four | .90 | 10.00 |

Tiple

Three wound and seven plain steel. (Sold in sets only.)

| | | | |
|---------|----------------------|-------------|--------------|
| No. 650 | Set of Ten | Each \$1.00 | Doz. \$10.00 |
|---------|----------------------|-------------|--------------|

Cases

CASES to fit the instruments listed in this catalogue are supplied in these styles:

STYLE B—Flannel lining, black ostrich grain keratol covering, heavy chipboard body, chain stitched edges, keratol bound; string pocket; plated steel trimmings.

STYLE C—Duvetyn lining, padded; heavy black grained keratol covering, three-ply wood body; neck rest and string pocket; leather strap handle; brass lock and trimmings nickel plated.

STYLE D—Rayon silk plush lining, heavily padded. Construction and covering like style C. Nickel plated brass lock and trimmings.

PRICES

| | B | C | D |
|----------------------------|--------|---------|---------|
| Guitar, Size 0 | \$7.50 | \$15.00 | \$25.00 |
| Guitar, Size 00 | 8.00 | 15.00 | 25.00 |
| Guitar, Size 000 | 8.50 | 15.00 | 25.00 |
| Guitar, Model R | 8.00 | 15.00 | 25.00 |
| Guitar, Model C | 8.50 | 15.00 | 25.00 |
| Guitar, Model D | 9.00 | 16.50 | 27.00 |
| Guitar, Model F | | 16.50 | 27.00 |
| Tenor Guitar, 5T. | 7.00 | 13.50 | 20.00 |
| Tiple | 5.00 | 8.50 | |
| Ukulele | 3.50 | 7.00 | 12.00 |
| Concert Ukulele | 4.00 | | |
| Tenor Ukulele | 4.50 | 9.00 | |
| Mandolin, Flat. | 5.00 | 9.00 | 15.00 |
| Mandolin, Curved | 5.50 | 10.00 | 16.50 |
| Tenor Mandola | 6.00 | 12.00 | |
| Mando-Cello | 8.50 | 15.00 | 25.00 |

PICKS

Select quality, beveled edges, polished finish, medium size and stiffness, suitable for general use on guitar or mandolin; stamped "Martin".

| | Prices | Each | Dozen | Gross |
|---------|------------------|--------|--------|---------|
| No. 138 | Tortoise shell.. | \$0.25 | \$2.70 | \$27.00 |
| No. 38 | Celluloid..... | \$0.10 | \$0.80 | \$ 8.00 |