

## THE GIBSON Mandolin Banjos

GIBSON construction affords, for the first time, a soprano voiced instrument of the banjo family with a tone that is characteristically banjoistic, powerful and snappy and yet of pleasing quality.

In stringing, tuning, pitch and fingering the mandolin-banjo is the same as the mandolin, but decidedly distinctive in tone and constructed on the same principle with the same exclusive features incorporated in the Gibson tenor-banjos.

The soprano voicing of the mandolin-banjo makes it essential as the "lead" instrument in the banjo

band or orchestra. Many dance orchestra players "double" on it in order to obtain a variety of effects throughout the program, for its clear voice is certain to penetrate any possible combination of brass, reed and percussion instruments.

Gibson has done a great deal to develop the mandolin-banjo and give it a fixed place among musical instruments. The Mastertone principles, which consist of the tone-tube, ball-bearing, tension-ring, and rim-bar are incorporated in models MB-4 and MB-3.

### STYLE MB-4 (Mastertone Construction)

Cremona brown finish, satin silver metal parts, white pyralin binding throughout; pearl nut; Japan pearl ornamentation and position dots; covered string-holder; best quality machine-heads with Japan pearl buttons. Standard Gibson mandolin scale, 18 frets over all, 23 1/4 inches. Weight packed for shipment, 15 pounds. Supplied with No. 389 Gibson Faultless, waterproof, silk-plush lined, side-opening case.

Mandolin-banjo  
Style MB-4



### BALANCE OF TONE

The good musician does not want an instrument which responds vigorously in one register, or on one note, at the expense of flabbiness or weakness in other registers or other parts of the scale. The capable banjoist wants "pep", — not on one string, but on each note of every string. The construction of Gibson banjos enables us to give these exact requirements to all banjoists.



D. A. Caldwell  
Soloist



Mandolin-banjo  
Style MB-3

### STYLE MB-3 (Mastertone Construction)

This model is finished to correspond with the Mastertone tenor-banjo style TB-3, with rich mahogany rim and neck shaded to the natural tone of the wood. Metal parts heavily nickel plated. Best quality machine-heads with ivory pyralin buttons. Gibson special finger-rest and arm-rest. Same dimensions and weight as style MB-4. Supplied with Gibson Faultless waterproof carrying case, number 389, side opening and silk plush lined, or number 104 Utility case.

### STYLE MB-1 (Tone-Tube Construction)

This mandolin-banjo is built to correspond with the tenor-banjo style TB-1. Finished in a rich brown antique mahogany, beautifully shaded to natural at the neck of heel. All metal parts are heavily nickel plated. Good quality machine-heads; solid ebony extension fingerboard, inlaid with pearl position dots. Supplied with Gibson Faultless case number 389, or Utility case number 104.



Mandolin-banjo  
Style MB-1

## The Gibson Banjos

Used and Endorsed by  
Prominent Artists



Ralph Dexter  
New York City



Albert Bellson  
St. Paul, Minn.



Joe Nicomede  
Altoona, Pa.



Bauer and Crooks  
Hartford, Conn.



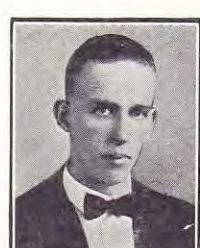
Ami Woodworth  
Benton Harbor, Mich.



William D. Moyer  
Harrisburg, Pa.



James Wright  
Boston, Mass.



Earl Roberts  
Chicago, Ill.



Ted Brockmeyer  
St. Louis, Mo.



John Downer  
Philadelphia, Pa.



C. Gebelein  
Baltimore, Md.



Louis Bellson  
Rock Island, Ill.



Russell C. Manuel  
En Route



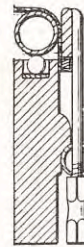
The Gibsons  
Lloyd Loar, Director

## THE GIBSON

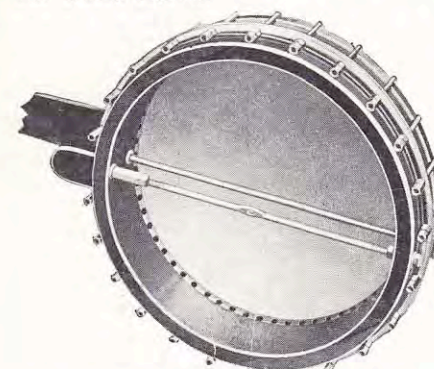
Mastertone Construction Is Supreme



The illustration above explains the simple but effective principle of the Gibson floating head feature. Note the tone-tube; the ball point contact; the angle-cut sound holes; the smooth, uninterrupted inner and outer surfaces of the rim.



The ball bearing contact and tension ring principle of the Gibson bracketless rim is illustrated above. Note the steel ball (1) countersunk in rim. There are twenty of these balls supporting the tone-tube (2), each ball having only two points of contact—above with the tone-tube; below with a metal disk. Note also detail of the tension-tube method of tightening the vellum head. Hooks pass through the tension-tube as shown (3). When hook nuts are tightened, the tension-tube is drawn against shoulder of the rim at the same time the stretcher band is drawn. Minimum number of parts; nothing to get out of order; maximum strength, minimum weight and upkeep expense.



View of back with tone-projector removed. Note: (1) tone-tube with angle cut sound holes; (2) co-ordinator rod with turn-buckle and adjuster nut; (3) rim-bar, which takes the place of the old fashioned dowel-stick or taper-post; (4) tension-tube through which pass the tension hooks for tightening the head.

## The Gibson Professional Special Resonator

The Gibson Professional Special resonator is truly a resonator in every sense of the word.

Although in appearance, it is a thing of beauty, it is built primarily to improve the banjo tone to the *nth* degree and its effectiveness beyond



that of the ordinary so-called resonator, is at once apparent to anyone at all familiar with the fundamental laws of acoustics.

Note how the concave back is designed to reflect all the tone generated by the under side of the head, out into the hall or auditorium.

The material of which the resonator is constructed is smooth and hard enough to reflect tone from the top, at the same time being yielding and flexible enough to allow the air to vibrate without noticeable loss of motion.

The Professional Special Resonator is easily attached, cannot possibly catch on the clothing, and may be removed instantly when necessary.

Tenor-banjos, style TB-5, TB-4 and TB-3 are equipped with this resonator at no extra charge. It will fit all other Gibson tenor, plectrum, or regular banjos with 10 1/2 inch rim, and will be substituted for the regular tone-projector at a slight additional cost.

## THE NEW Gibson BANJOS



LONG BEACH ENTERTAINERS, Michigan City, Indiana.  
CONN R. HOLLOWAY, Director. FORREST L. RITCHEY, Manager.  
This Gibson Banjo Orchestra has proved to be the most popular dance combination at the resorts along the shores of Lake Michigan.

GIBSON, INC., KALAMAZOO, MICHIGAN



## THE GIBSON Tenor Banjo

STYLE TB-1

(Tone-Tube Construction)

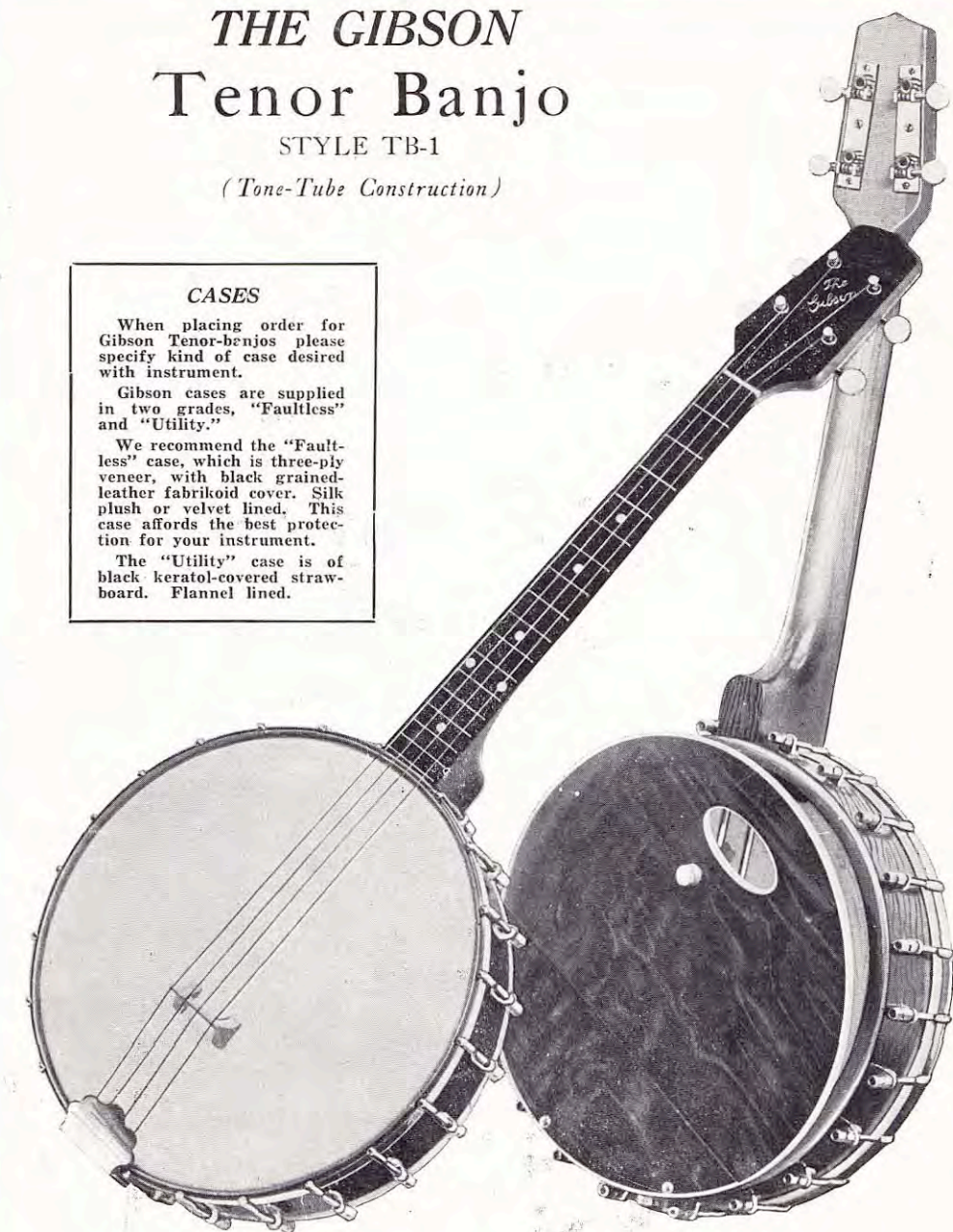
### CASES

When placing order for Gibson Tenor-banjos please specify kind of case desired with instrument.

Gibson cases are supplied in two grades, "Faultless" and "Utility."

We recommend the "Faultless" case, which is three-ply veneer, with black grained-leather fabricoid cover. Silk plush or velvet lined. This case affords the best protection for your instrument.

The "Utility" case is of black keratol-covered straw-board. Flannel lined.



THIS instrument supplies the demand for a medium priced tenor-banjo built by Gibson workmen and incorporates standard Gibson Banjo features. The style TB-1 possesses the characteristic snappy, powerful tenor-banjo tone and is built of carefully selected material. The rim and neck are best quality straight-grained Michigan hard white maple, finished in rich, antique-brown mahogany, beautifully shaded to natural finish.

High quality selected calf-skin head stretched over an especially constructed one-half inch tubular brass bearing band; best quality metal parts, heavily nickel plated. Ivory pyralin machine-head buttons. Silvered ornamentation on head, pearl position dots. Ebony fingerboard; 21-inch scale and tone-projector. A high grade banjo and a favorite among players who desire the special advantages afforded by Gibson tone and construction.

## THE GIBSON Guitar Banjo

STYLE CB-4

(Mastertone Construction)

This instrument delights every musician who plays or hears it. Tuned and played exactly the same as the regular guitar; powerful, pure tone, with the resonance of a harp, and just the right flavor of banjo quality. Played regular American guitar style or with the plectrum—a melody, accompaniment, or self-accompanied solo instrument. Used successfully in small dance combinations where piano is not available. Same equipment, trimmings and finish as tenor-banjo, style TB-4, 14-inch head, best quality. Extreme length, 36 $\frac{3}{8}$  inches; weight packed for shipment, 23 pounds.

Supplied with No. 441 Gibson Faultless waterproof carrying case, side-opening, silk-plush lined.

### Gibson Mastertone Cello-banjo

STYLE CB-4

The baritone voice of the banjo ensemble with a range from bass to tenor. Stringing, tuning, pitch and fingering the same as the mando-cello or violoncello (one octave lower than mandola or viola). The tone is mellow and rich as a cello in the upper register with a substantial bass in the lower register. Used in small and large combinations, dance orchestras, mandolin or banjo orchestras, and can be played very easily by any mandolin, tenor-banjo, tenor-mandola or mando-cello player. Same equipment and trimmings as TB-4 tenor-banjo.

Weight and dimensions same as GB-4.

Supplied with No. 441 Gibson Faultless waterproof carrying case, side-opening, silk-plush lined.



## THE GIBSON Tenor Banjo

STYLE TB-4

(Mastertone Construction)

THIS instrument is becoming a universal favorite with professional musicians, and is rapidly being adopted by leading orchestra players in America and abroad. A beautiful instrument, easy to play, with a wonderful, properly voiced, powerfully projected tone, having in abundance that banjo "snap" and "tang" that is the delight of players and orchestra leaders.

Deluxe finish in every detail. Neck and rim, select Michigan curly maple, finished in sunburst Cremona brown; in striking contrast to the satin finish of the heavily silver-plated metal parts. Non-warpable neck; pearl nut, geared pegs, 21-inch scale, with 18 nickel silver hardened frets. Solid ebony fingerboard (not veneered), inlaid with pearl position dots. Standard Gibson Mastertone construction throughout; the famous ball-bearing-contact tone-tube, tension-ring, and all exclusive Gibson Features including co-ordinator, rod, rim-bar, etc. Professional Special resonator regular equipment.

Plectrum banjos, style PB-4 and PB-3, and Regular (5-string) banjos, style RB-4 and RB-3, are available. Same finish and specification as Tenor-banjos, style TB-4 and TB-3. Equipped with tone-projector. Literature on these models furnished upon request.



## THE GIBSON Tenor Banjo

STYLE TB-3

(Mastertone Construction)

### IMPORTANT

Gibson tenor banjos can also be furnished with 19-inch scale, 27 frets, extension finger-board, and finger-rest. Other specifications as described. Unless 19-inch scale is requested when order is received we will ship 21-inch scale as illustrated in this portfolio.



THIS instrument particularly represents the most in quality, durability and tone for the least cost. It has the characteristic brilliant power, and "tang" of the Professional Special models that are the joy of the dance orchestra tenor-banjoists heart, as well as the banjo soloist on the concert or vaudeville platform.

Incorporated in the construction of this instrument are all of the Mastertone features. Select ebony finger-board, other wood parts best quality maple finished in beautiful rich, dark mahogany, with neck blending from mahogany to clear natural maple finish. Japan pearl ornamentation and position dots. 21-inch scale with 18 frets; the ball-bearing-contact tone-tube, tension ring, co-ordinator rod and rim-bar.

The Gibson Professional Special resonator is regular equipment.

## THE GIBSON Tenor Banjo

STYLE TB-5

(Mastertone Construction)

THIS model Tenor Banjo is the ultimate in banjo construction, appearance, and tone. It embodies every feature of the Mastertone construction—rim with ball bearings supporting tuned tone-tube, floating head—and has a phenomenally brilliant and powerful tone of the characteristic banjo tone-color. It is the favorite of the leading professional players, dance and recording orchestras because of its wonderful carrying power, and is the invariable choice of the artist or amateur who wants the last word in banjos.

Equipped with Gibson Professional Special resonator of pearl pyralin. Rim veneered with pearl pyralin. Head and fingerboard artistically inlaid with Japan pearl ornamentation. Slender neck of best grade curly maple obtainable, finished to blend with rim and resonator. Fingerboard of solid coal-black Madagascar ebony. 21-inch scale, 18 frets of hardened nickel silver. Special geared friction-pegs, gold plated with large hand-carved pearl buttons. Pearl position dots. Fingerboard bound with white ivory. Arm-rest. All metal parts heavily gold plated. Tension ring to support the hooks, Gibson professional bridge with ebony string saddle. Slender neck. Easy to play.

