



*The*  
**B & D**  
**"SILVER BELL"**  
**BANJO FAMILY**

THE BACON BANJO CO. INC.  
GROTON, CONN.



FOR THE IDENTIFICATION AND DATING  
OF  
VINTAGE GUITARS, MANDOLINS AND BANJOS  
CATALOGS FROM THE COLLECTION OF STANLEY BURG

These are scans of catalogs originally distributed to the public to describe the manufacturer's products available for sale at one point in time.

The intended use for these catalogs is historical research: vintage instrument identification and dating.

These catalogs are not offered here for sale or re-sale – They are only for the academic purpose of instrument identification, research and historical context. Please respect their use and do not reproduce, copy or distribute this information for any other purpose.

It is important to note that instrument catalogs are not always accurate in their descriptions of instrument specifications or the images used. While product improvements were constantly being made; catalogs often used older existing drawings, etchings or photographs. In some cases instruments were offered in catalogs that had been discontinued for years. For these reasons, catalogs can only be used as general guides for the dating and identification of vintage instruments.

If you are having trouble with some of the instruments details, we may be able to help. Feel free to contact us at:

ACOUSTICMUSIC.ORG:  
<http://www.AcousticMusic.Org>



# B & D Silver Bell Banjos

Reg. U. S. Pat. Off.

Made in  
Mandolin  
Tenor

Plectrum  
(4-String)  
Regular  
(5-String)  
Styles



Pat. Pending

## Style No. 1 B & D "Silver Bell" Banjo

In Tenor, Plectrum (4-string) and Regular (5-string) Banjos

**D**ETAILS — Maple neck with three-ply veneers through center, fancy design pearl inlaid peghead and inlaid pearl position marks on the fingerboard. Seven lap maple rim with spun metal chamber top flange resting on large steel wire. The amplifier extension flange forms a large resonating chamber giving a constant and continuous tone vibration which is forced through the holes in the flange. The flange back having a larger diameter than the rim thus increases the air space and consequently the volume of tone when the instrument is played. All metal parts best quality nickel plate.

**EQUIPMENT** — Gear pegs which give a quick and accurate tuning, patent pressure tailpiece, Bestone arm rest, selected Rogers head, Bacon Webfoot bridge, B & D Super Strings also our latest improvement the B & D Soft Pedal with which instant control of loud and soft tones as desired.

**FINISH** — All wood parts beautifully shaded, smooth Permanent finish.

PRICE of Style No. 1, B & D Silver Bell Tenor, Plectrum (4-string) or Regular (5-string) Banjos . . . \$140.00  
 PRICE of Style No. 1, B & D Silver Bell Mandolin Banjo . . . . . 125.00

THIS BACON & DAY CATALOGUE SUPPLEMENT IS FROM THE 1928 PERIOD. IT IS AN INSERT FOR THE TENTH OF A SERIES OF GIMA REPRINTS, ON BACON & DAY "SILVER BELL" BANJOS. ALL INQUIRIES RELATING TO THIS CATALOGUE SHOULD BE SENT TO GIMA REPRINTS, 203 SOUTH 7th, BENLD, ILL., 62009.

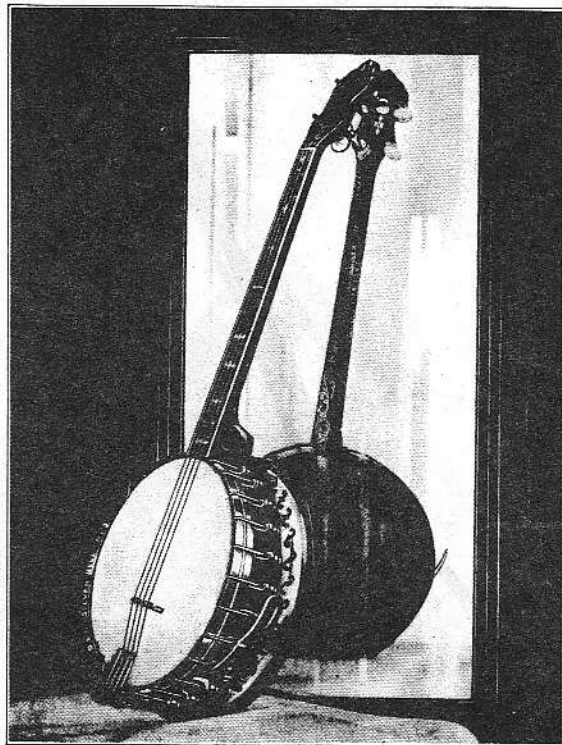
B & D

# B & D Silver Bell Banjos

Reg. U. S. Pat. Off.

Styles Nos. 2 and 3—  
Silver and Gold Plated  
Metal Parts, Pearl Keys,  
Internal Reduction Pegs,  
Hand Carved Necks,  
Dark Antique Finish,  
Neck and Rim.

A rare combination of  
tone quality, beauty of  
design and artistic har-  
mony of color.



Pat. Pending

We can picture your  
extreme pleasure and  
enthusiasm with either  
of these wonderful in-  
struments.

To those who appre-  
ciate the higher ideals of  
the banjo maker's art,  
these styles are submit-  
ted for their critical  
approval.

## Styles No. 2 and 3 B & D "Silver Bell" Banjos

Made in Tenor, Plectrum and Regular Banjos

**DETAILS OF STYLE No. 2.** Metal parts silver plated in satin finish, heel of neck hand carved. Wood parts, curly maple in dark antique shaded Permanent finish. For those wishing a silver plated finish of metal parts, this instrument meets their requirements. Other details of construction same as Style No. 1 Silver Bell Banjo.

**DETAILS OF STYLE No. 3.** Gold plated metal parts, heel of neck handsomely hand carved, ivoroid bound peg head. Other details same as Style No. 2 except that all metal parts are gold plated instead of silver plated.

**EQUIPMENT**—of Style No. 2 and 3. Planet gear pegs which give quick and accurate tuning (four to one ratio). Patent pressure tailpiece Bestone Arm Rest, Selected Rogers head, Bacon Webfoot bridge, B & D Super Strings, also our latest improvement the B & D Soft Pedal Mute with which instant control of Loud and Soft tones as desired. Metal parts are silver or gold plated as applying to whether being style No. 2 or No. 3.

**FINISH**—All wood parts beautifully shaded, smooth, Permanent finish.

**PRICE** of Style No. 2 B & D "Silver Bell" Tenor, Plectrum (4-string) or Regular (5-string) Banjos . . . \$185.00

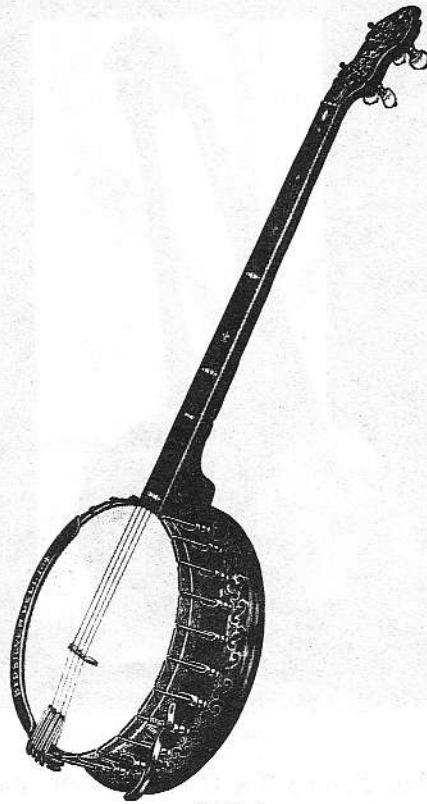
**PRICE** of Style No. 3 B & D "Silver Bell" Tenor, Plectrum (4-string) or Regular (5-string) Banjos . . . 250.00

All metal parts finest quality gold and silver plate with non-tarnishing finish.



# B & D Silver Bell Banjos

Reg. U. S. Pat. Off.



Pat. Pending

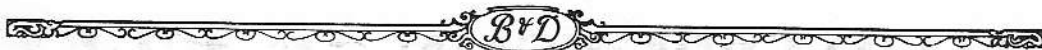
## Style No. 4 Silver Bell Plectrum Banjo

Made in Tenor, Plectrum and Regular Banjos

**S**AME descriptions, details and equipment as Style No. 3 Silver Bell Banjo. In addition spun metal parts are gold plated handsomely engraved and hand-burnished.

The chaste and beautiful white MONTANA Special B & D Silver Bell Banjos are now available in the Style No. 4, with gold plated, engraved and hand-burnished metal parts. Other details and equipment same as Style No. 3 MONTANA Special Silver Bell Banjo. See page 20.

PRICE of Style No. 4, B & D Silver Bell, Tenor, Plectrum (4-string) or Regular (5-string) Banjo . . . \$320.00  
PRICE of Style No. 4 MONTANA B & D Silver Bell, Tenor, Plectrum (4-string) or Regular (5-string) Banjo 340.00



# B & D "Ne Plus Ultra" Silver Bell Banjos

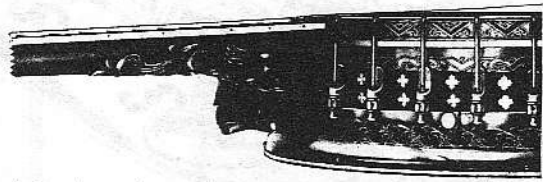
Reg. U. S. Pat. Off.



Pat. Pending

Style No. 6 "Ne Plus Ultra B & D Silver Bell" Tenor-Banjo

Made in Tenor, Plectrum and Regular Banjos



**S**OLID ebony neck, lion's head carving on heel, carved ebony back of peghead, fingerboard and top of peghead inlaid with elephant ivory, beautifully engraved with original designs. Ebony rim pearl inlaid, gold plated and engraved metal parts. Art attainment and the ultimate in banjo design and construction meet in the style No. 6 Ne Plus Ultra Silver Bell Banjo. Also equipped with the new B & D Soft Pedal Mute.

**PRICE** of Style No. 6 Ne Plus Ultra B & D Silver Bell Tenor, Plectrum (4-string) or Regular (5-string) Banjo . . . . . \$450.00

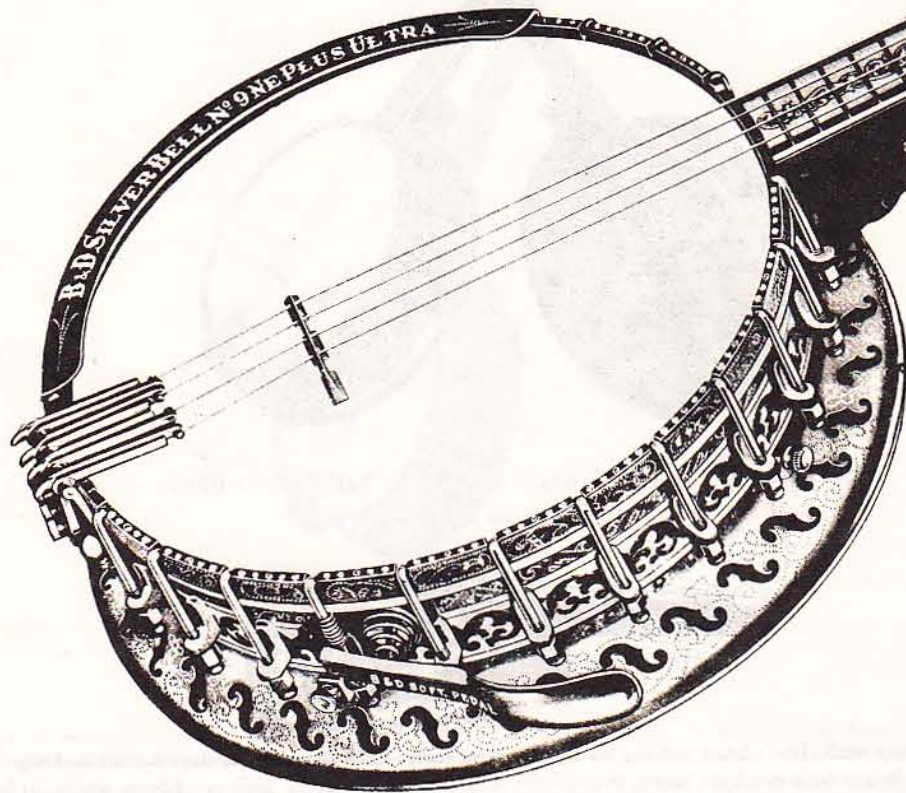
# HERE IT IS! Your Ultimate Choice!

## THE NEW No. 9 "NE PLUS ULTRA" B & D "Silver Bell" Banjo

REG. U. S. PAT. OF.

REG. U. S. PAT. OF.

In every detail of originality, in superb performance, in painstaking craftsmanship, in fineness of materials, in exacting manufacturing precision, in sterling dependability—The new No. 9 is another brilliant triumph of Bacon & Day Genius—the fruition of years of faithful adherence to one great principle.



... sanitary engineering at the Uni-

**STAR OF MELODY WORLD  
IS JEWELLED BANJO HERE**

The White House may have the distinction of having a gilded piano at one end of its luxurious drawing room, but St. Paul has something more awe-inspiring than that.

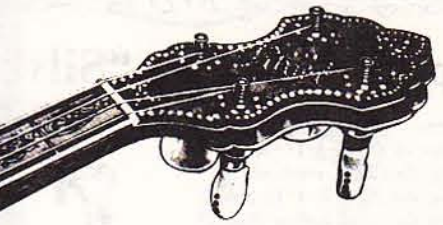
A monarch of the melody world, it is, and now on display in the window of W. J. Dyer & Bros., 23 West Fifth street.

It goes by the name of a banjo, but it is a symphony all its own, in art, color, quality and workmanship. Its harmony is not confined to tone, but is consistently carried out in the intricate composition of gold, mother of pearl, ebony and rhinestones, that form a shell for this instrument, called the "Silver Bell."

It is an artist model, specially made by the Bacon Banjo company for Frederick Bacon, president of the company.

The foundation is a heavily engraved plated gold. The back of the resonator is a smooth surface of mother-of-pearl, inlaid with black and red enamel. The hoop, pegs and scroll of the neck are of solid mother of pearl, heavily encrusted with vari-colored rhinestones. The finger-board of ivory is finely etched in ebony. An ebony lion's head set with gleaming jeweled eyes, forms the heel of the neck. The banjo is valued at \$900.

ST. PAUL PRESS



### DOUBLE TONE CHAMBERS

give a penetrating and carrying power of tone that every Professional seeks. Moreover, it is a

Quality that harmonizes beautifully with other instruments of the Orchestra.

**TWO INSTRUMENTS IN ONE**—All B & D Silver Bell Banjos are equipped with the latest and outstanding improvement in Banjo Construction, the B & D "Soft Pedal." It is an exclusive feature of these instruments and some of the effects produced with it are sensational. With it you can soften the tone to the Guitar or Lute—which gives you at your instant command a muted effect if desired or the ringing banjo tone.

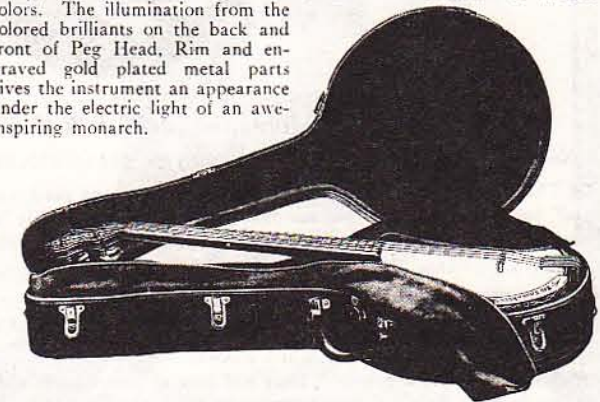
**INDIVIDUALITY OF THE NEW No. 9.** Engraved full length Finger-board of real elephant ivory, sawed from the tusk by our own craftsmen. **SOLID EBONY NECK** with elephants head sculptured in heel and ivory tusks, gold mounted.

**FRONT AND BACK OF PEG HEAD** have white pearl ivoroid backgrounds decorated in relief with ornamental scroll designs enamelled in three colors. The lettering and scroll designs are set with variegated colored rhinestones which make a very luminous and brilliant appearance.

**RIM AND AMPLIFIER BACK** are white pearl ivoroid enriched with symmetrical decoration of scrolling designs in black, gold, and red enamel.

**THE AMPLIFIER BACK**, although not shown, is an elaborate work of the Artist with its lavish interlacing of scrolling designs, surrounded by a symmetrical decorative border with a rosetted medallion center, all in three color enamel relief.

**METAL PARTS** are heavily gold plated and non-tarnishing. Top Hoop, and Resonator Shell are hand engraved and hand burnished. Top Hoop, Rim and Shell are further enriched with brilliants of various colors. The illumination from the colored brilliants on the back and front of Peg Head, Rim and engraved gold plated metal parts gives the instrument an appearance under the electric light of an awe-inspiring monarch.



PRICE OF STYLE NO. 9

"Ne Plus Ultra" B & D Silver Bell Banjo with Black or Brown Solid Leather Koverite Case.....\$900.00



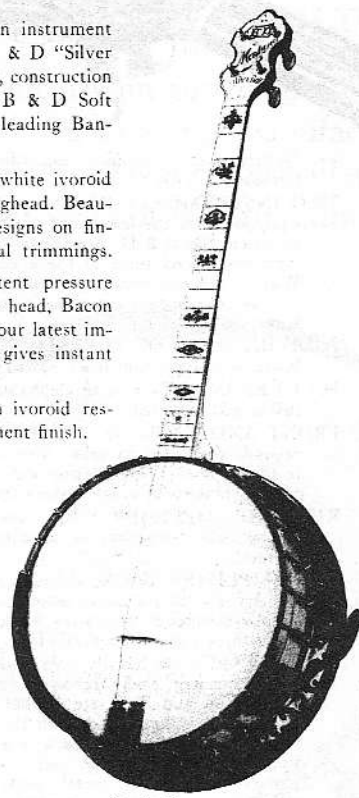
# Montana Special B & D "Silver Bell" Banjos

**P**ROTECT your Banjo Interests with an instrument having the exclusive features of the B & D "Silver Bell" Banjos, whose tone quality, durability, construction and latest equipment, including the New B & D Soft Pedal, makes them the ultimate choice of leading Banjoists.

**DETAILS** — White holly neck and rim, white ivoroid veneered resonator, rim, fingerboard and peghead. Beautiful brown and gold enamelled scrolled designs on fingerboard and peghead. Nickel plated metal trimmings.

**EQUIPMENT** — Planet gear pegs, patent pressure tailpiece, Bestone arm rest, selected Rogers head, Bacon Webfoot bridge, B & D Super Strings, also our latest improvement, the B & D Soft Pedal, which gives instant control of Loud and Soft tones as desired.

**FINISH** — All wood parts together with ivoroid resonator and top of peghead, smooth, Permanent finish.



Pat. Pending

Made in

Tenor  
Plectrum and  
Regular Banjo  
Styles.

The Montana Special Styles are works of art in their beautiful white appearance.

For those who admire the chaste white finish, a better choice can not be made.

PRICE of No. 1, "Montana Special," B & D "Silver Bell" Tenor, Plectrum (4-string) or Regular (5-string) Banjos . . . \$160.00

## Style No. 1, Montana Special B & D Silver Bell Banjo

### STYLE No. 3 "MONTANA SPECIAL" B & D "SILVER BELL" BANJO.

**DETAILS** — Except for the white holly neck and rim and pearl ivoroid veneered parts, the Style No. 3 "Montana Special" has the same details and equipment as the gold plated style No. 3 "Silver Bell" Banjo described on page 8. The neck, peghead and resonator have original interlacing scrolling designs in gold and brown enamel.

PRICE of Style No. 3 "Montana Special" B & D "Silver Bell" Tenor, Plectrum (4-string) or Regular (5-string) Banjos . . . \$270.00

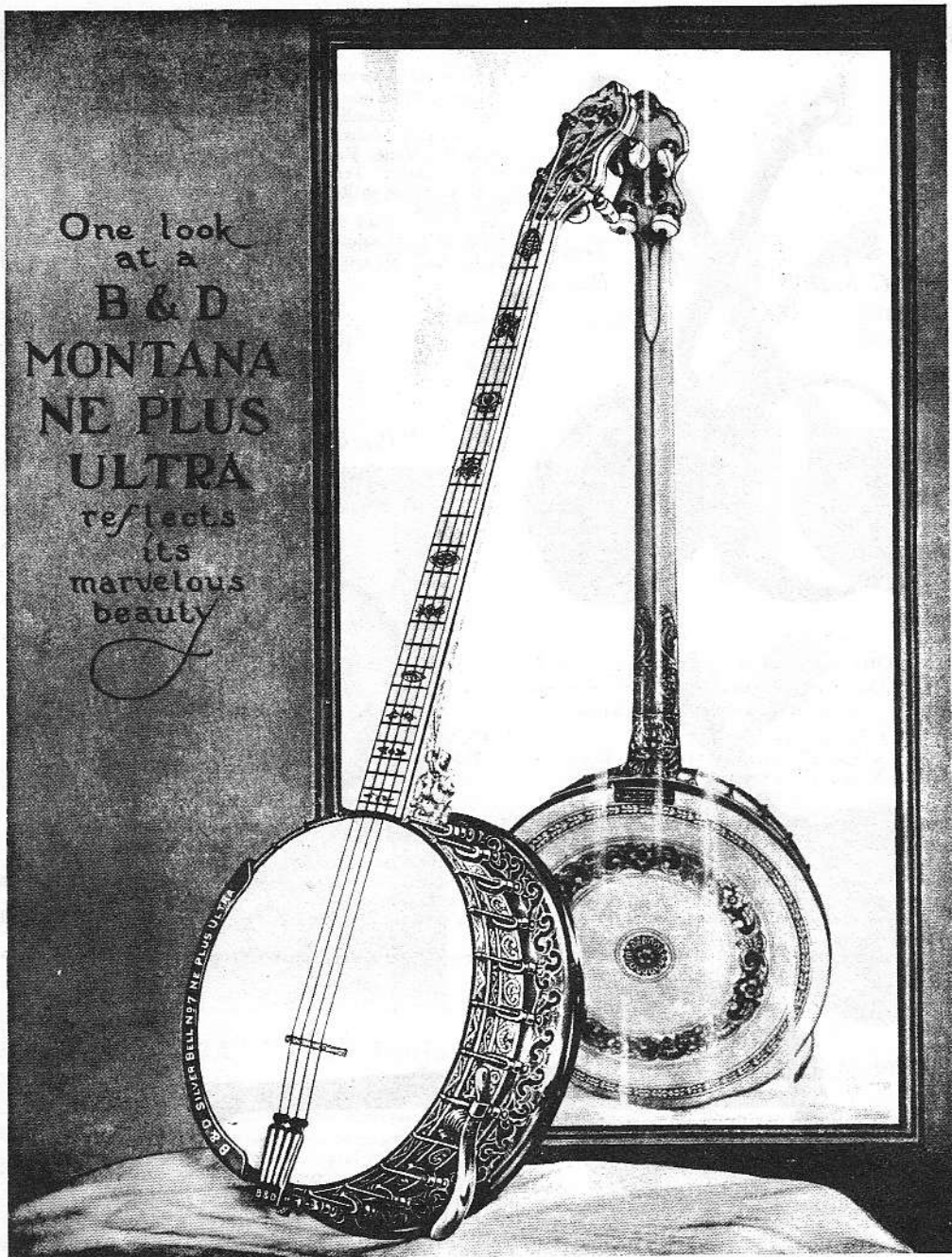
### STYLE No. 7 "MONTANA SPECIAL" B & D "SILVER BELL" BANJO.

You will find on page 21 a picture of this supreme contribution to Banjocraft. Beautifully engraved and gold plated hand-burnished metal parts, fingerboard, front and back of peghead, rim and resonator enriched with original lavish decorative designs in black, brown and gold enamel on white pearl ivoroid background. One important detail of decoration is the sculptured carving of the Lion's head on the neck of the banjo. A veritable art treasure and gem of banjo construction appealing to the connoisseur.

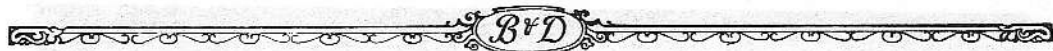
PRICE of Style No. 7 "Montana Ne Plus Ultra" B & D "Silver Bell" Tenor, Plectrum (4-string) and Regular (5-string) Banjo . . . \$500.00



One look  
at a  
B & D  
MONTANA  
NE PLUS  
ULTRA  
reflects  
its  
marvelous  
beauty



No. 7 Montana Ne Plus Ultra B & D "Silver Bell" Banjo, \$500.00  
Solid Brown or Black Leather Koverite Case with Zip inside cover, silk plush lined \$50.00



TO make a success of anything much depends on the right start. The new model "C Super" with its mahogany neck, rim and tone chamber back, satin finished, is a well-made banjo, perfect in all details.

Style "C" Tenor Banjo, without Tone Chamber . . . \$40.00  
 Style "C Super" Tenor Banjo (as illustrated) . . . 55.00

Above Styles in Regular (5 string) and Plectrum (4 string) at same prices.

Style "C" Mandolin Banjo . . . \$35.00  
 Style "CC" Mandolin Banjo with tone chamber . . . 55.00



SPLENDID value, latest improvements, dark finish maple neck, rim and tone chamber. Internal reduction pegs, and arm rest. You will be proud to own this banjo.

"Peerless X Special" Tenor Banjo . . . \$75.00  
 "Peerless X Special" Plectrum (4 String) Banjo . . . 75.00  
 "Peerless X Special" Regular (5 String) Banjo . . . 75.00

### Bacon Guitar-Banjo

THE Guitar-Banjo is strung and played like a guitar, only having a banjo head you get the banjo tone. An instrument whose artistic style, appearance and beautiful tone quality appeals instantly to the discriminating purchaser and is powerful in the hands of a good performer, played with the pick.

Details of construction and trimmings, except for having a neck for six strings and the rim being 11½", are the same as descriptions of the same styles as the other Banjos listed.

Always use B & D Super Guitar-Banjo Strings as others are not always suitable gauges or sizes.



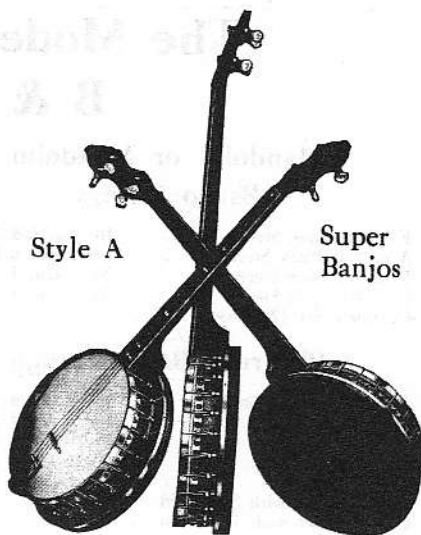
Style Peerless  
 11½" Rims

Style "Peerless" without tone chamber . . . \$60.00  
 Style "Peerless X Special" with tone chamber resonator . . . 80.00  
 Style No. 1 "Silver Bell" with Arm Rest and Internal Reduction Pegs . . . 150.00

## Style "A Super" Tenor and Plectrum Banjos

THESE B & D model instruments with their patent tone chamber top construction and amplifier backs give a penetrating quality of tone of great carrying power. Just what you are looking for—a superior instrument in every way for the money.

Style "A B & D Super" Tenor-Banjo . . . . .	\$100.00
Style "A B & D Super" Plectrum (4 string) . . . . .	100.00
Style "A B & D Super" Regular (5 string) . . . . .	100.00



## Style No. "2A" Ukulele Banjo

UKULELE Banjos of the higher grades are becoming the choice of many players of this popular instrument.

Easy to learn, easy to carry and good company wherever it goes. Several sales of the gold plated and engraved \$250.00 models were made during the past season.

Strung and played like a Ukulele with its banjo construction you get the snap and pep of the banjo.

Style No. 1 Mahogany neck and rim . . . . .	\$27.00
Style No. "1A" same as No. 1 with tone chamber . . . . .	35.00
Style No. "2A" Maple Neck and Rim and tone chamber . . . . .	55.00
Style No. "3A Silver Bell" . . . . .	75.00



Pat. Pending

## B & D "Silver Bell" Mandolin Banjo

THE Mandolin Banjos are strung and played the same as mandolins, on account of their banjo construction, they have the banjo tone.

Details of these instruments except size and stringing are same as other models in tenor banjo.

Style "C" . . . . .	\$35.00
Style "CC" with tone amplifier chamber . . . . .	55.00
Style "Peerless X Special" with tone amplifier chamber . . . . .	75.00
Style No. 1 B & D "Silver Bell" Banjo . . . . .	125.00



# The Modern Player Demands B & D Equipment

## Mandolin or Mandolin Banjo Strings

E or 1st Plain Steel . . . . .	10c Each, 6 for	\$0.50
A or 2nd Plain Steel . . . . .	10c Each, 6 for	.50
D or 3rd Spun Steel . . . . .	20c Each, 3 for	.50
G or 4th Spun Steel . . . . .	20c Each, 3 for	.50
Complete Set (2 of each) . . . . .		1.20

## Plectrum Banjo Strings

1st or 5th Plain Steel . . . . .	15c Each, 4 for	.50
2nd Plain Steel . . . . .	15c Each, 4 for	.50
3rd Plain Steel . . . . .	15c Each, 4 for	.50
3rd Spun Steel . . . . .	30c Each, 2 for	.50
4th Spun Steel . . . . .	30c Each, 2 for	.50
Complete Set with Spun 3rd . . . . .		.80
Complete Set with Plain 3rd . . . . .		.70

## Tenor Banjo Strings

A or 1st . . . . .	10c Each, 6 for	.50
D or 2nd . . . . .	10c Each, 6 for	.50
G or 3rd . . . . .	20c Each, 3 for	.50
C or 4th . . . . .	20c Each, 3 for	.50
Complete Set . . . . .		.60

## B & D Super Strings



A Quality String  
Strongest and Best Toned  
Choice of Orchestra and  
Professional Players.

*Prices for gross lots quoted on application.*



Never-False Gut Strings  
are absolutely true

### Banjo

5-string, including B & D Super Spun Silk 4th  
Per set of 5 . . . . . \$1.75

### Ukulele

Including B & D Super Spun Silk 3rd  
Per set . . . . . \$0.75

### Guitar

E—B—G Each . . . . . \$0.45

## B & D Webfoot Tenor and Plectrum Banjo Bridges



125

No. 125—Ebony Top Tenor and Plectrum Banjo Bridge . . . . . 50c each  
 $\frac{1}{2}$ ",  $\frac{3}{8}$ " and  $\frac{5}{8}$ " High